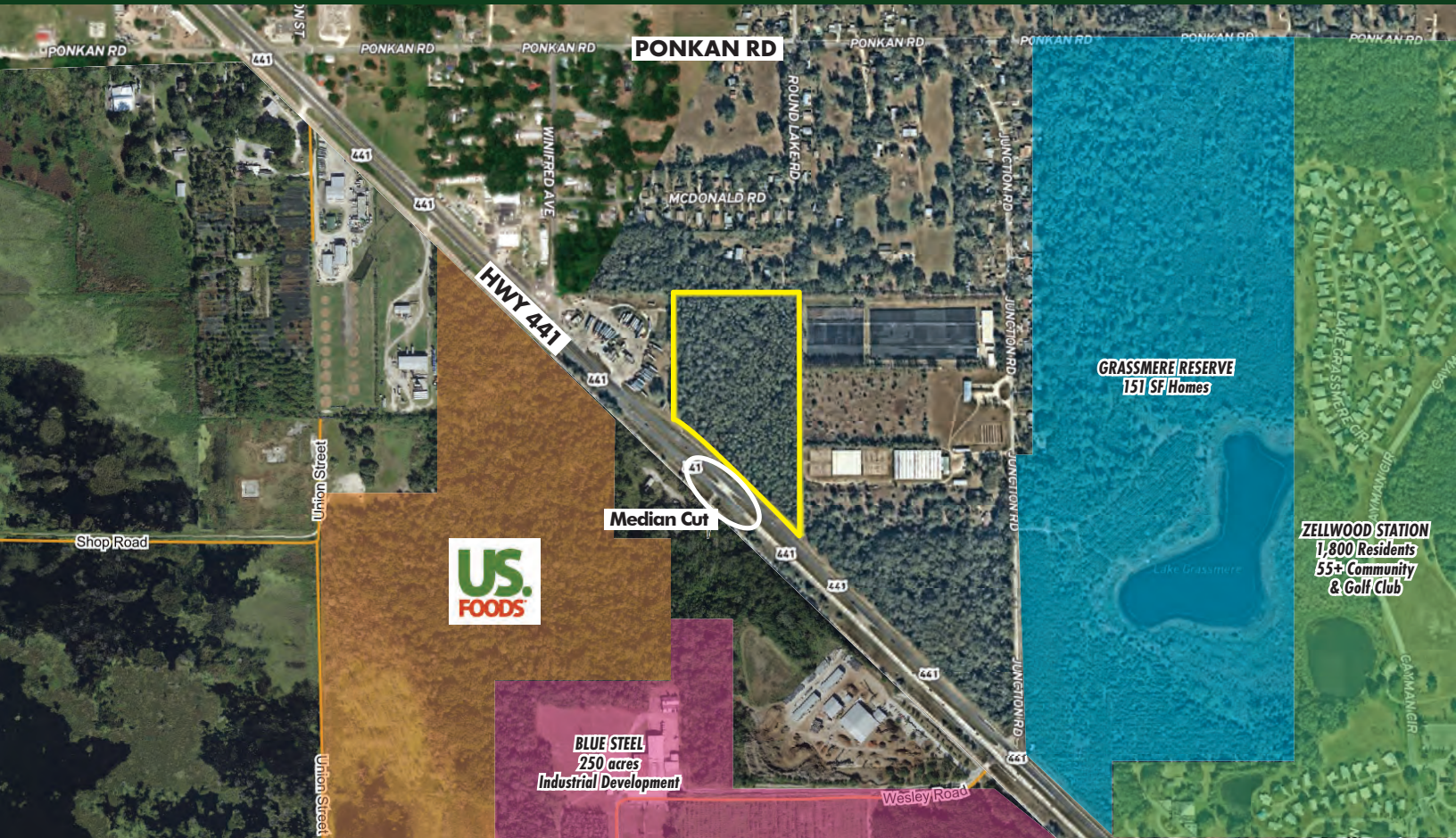


**FOR
SALE**

HWY 441 / JUNCTION RD LAND

2521 N Orange Blossom Trl, Apopka, FL 32703



ABOUT THE PROPERTY

SIZE 15± acres

PRICE \$1,748,000

ZONING A-1

FLU RS 1/1

ROAD FRONTAGE 930'± on Hwy 441

PARCEL ID 27-20-27-0000-00-045

DESCRIPTION

Rapidly growing Hwy 441 corridor! This 15± acre property is a pine forest with frontage on Hwy 441. Located in the City of Zellwood, there are many new developments nearby. The Grassmere Reserve residential development with 179 proposed residential units is just 1,600 feet away on Hwy 441. Across the street, there is a proposed industrial master development with entitlements for up to 2.5 million sq.ft. of distribution space. Additionally, there is a proposal to signalize Junction Road, just 1,500 feet away from the property. **Do not miss this opportunity, call for a showing today!**

MAURY L. CARTER & ASSOCIATES, INC.

Licensed Real Estate Brokers | www.maurycarter.com | 407-422-3144

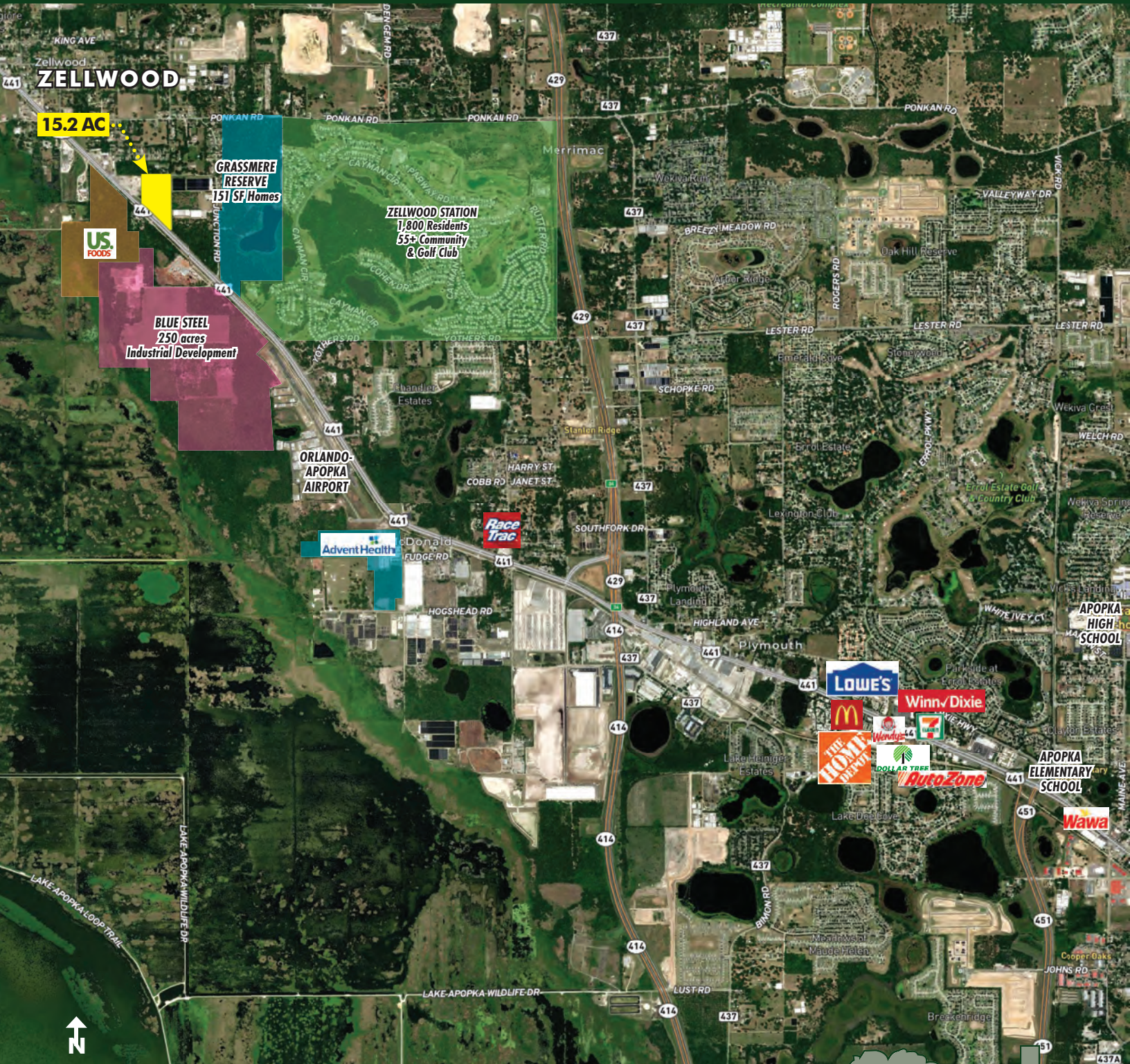


Maury L. Carter & Associates, Inc.
Licensed Real Estate Broker

**FOR
SALE**

HWY 441 / JUNCTION RD LAND

2521 N Orange Blossom Trl, Apopka, FL 32703



REGIONAL MAP

MAURY L. CARTER & ASSOCIATES, INC.

Licensed Real Estate Brokers | www.maurycarter.com | 407-422-3144



**FOR
SALE**

HWY 441 / JUNCTION RD LAND

2521 N Orange Blossom Trl, Apopka, FL 32703



MAURY L. CARTER & ASSOCIATES, INC.

Licensed Real Estate Brokers | www.maurycarter.com | 407-422-3144



Maury L. Carter & Associates, Inc.
Licensed Real Estate Broker