

±5.35 ACRES OF INDUSTRIAL/COMMERCIAL LAND

1306 SILVER BEACH ROAD

1306 Silver Beach Road

LAKE PARK, FLORIDA 33403



PROPERTY HIGHLIGHTS:

- ±5.35 acres of land
- Includes ±1,650 SF building built in 1969
- Site dimensions ±200 ft. on Silver Beach Road and ±1,200 ft. deep
- Zoned: CLIC Campus Light Industrial & Commercial (36-Lake Park)
- Uses include sales, leasing or rentals of vehicles, trailers or boats. Freighting, or trucking yard or terminal.
- Located between Congress Ave. and Dixie Hwy., just east of newly constructed ±360,000 SF Silver Beach Industrial Park
- Contact Broker for Environmental Phase 2 Report

Sale Price:

\$1,500,000 per Acre

CONTACT:

Franklin B. Morrison, Principal

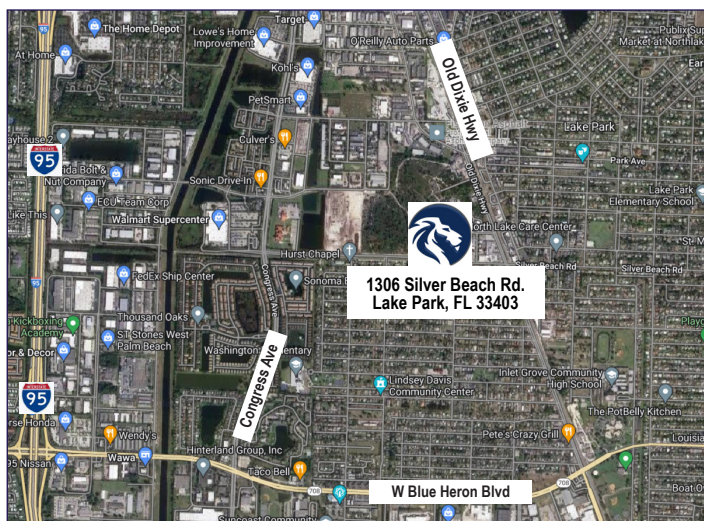
954 801 0830

frank@weavermorrison.com

WEAVER • MORRISON



COMMERCIAL REAL ESTATE



WEAVER • MORRISON COMMERCIAL REAL ESTATE

2972 NW 60th Street • Fort Lauderdale, FL 33309

954 686 9300 www.weavermorrison.com

NO WARRANTY OR REPRESENTATION, EXPRESS OR IMPLIED, IS MADE AS TO THE ACCURACY OF THE INFORMATION CONTAINED HEREIN, AND THE SAME IS SUBMITTED SUBJECT TO ERRORS, OMISSIONS, CHANGE OF PRICE, RENTAL OR OTHER CONDITIONS, PRIOR SALE, LEASE OR FINANCING, OR WITHDRAWAL WITHOUT NOTICE, AND OF ANY SPECIAL LISTING CONDITIONS IMPOSED BY OUR PRINCIPALS NO WARRANTIES OR REPRESENTATIONS ARE MADE AS TO THE CONDITION OF THE PROPERTY OR ANY HAZARDS CONTAINED THEREIN ARE ANY TO BE IMPLIED.

±5.35 ACRES OF INDUSTRIAL/COMMERCIAL LAND

1306 SILVER BEACH ROAD

1306 Silver Beach Road

LAKE PARK, FLORIDA 33403



WEAVER • MORRISON



COMMERCIAL REAL ESTATE

Franklin B. Morrison, Principal

954 801 0830

frank@weavermorrison.com

NO WARRANTY OR REPRESENTATION, EXPRESS OR IMPLIED, IS MADE AS TO THE ACCURACY OF THE INFORMATION CONTAINED HEREIN, AND THE SAME IS SUBMITTED SUBJECT TO ERRORS, OMISSIONS, CHANGE OF PRICE, RENTAL OR OTHER CONDITIONS, PRIOR SALE, LEASE OR FINANCING, OR WITHDRAWAL WITHOUT NOTICE, AND OF ANY SPECIAL LISTING CONDITIONS IMPOSED BY OUR PRINCIPALS NO WARRANTIES OR REPRESENTATIONS ARE MADE AS TO THE CONDITION OF THE PROPERTY OR ANY HAZARDS CONTAINED THEREIN ARE ANY TO BE IMPLIED.