

# EXECUTIVE SUMMARY

• 1320 Culver Dr. NE, Unit 5 Palm Bay, FL 32907



## OFFERING SUMMARY

<b>Available SF:</b>	2,760 SF
<b>Lease Rate:</b>	\$16.00 SF/yr (\$3.49/NNN)
<b>Lot Size:</b>	2.0 Acres
<b>Year Built:</b>	2007
<b>Building Size:</b>	27,610 SF
<b>Zoning:</b>	CC
<b>Submarket:</b>	South Brevard

## PROPERTY OVERVIEW

Beautiful flex space available in great location with rollup door at the rear of the space.

Plaza surrounded by dense residential in the Lockmar Area. Property is located near many national retailers and a central commercial district along Palm Bay Road.

Last unit available at this property with flex space in high demand. This space will not last long!

High traffic counts: 45,850 (18) from Culver Dr. to I-95 ramp

## LOCATION OVERVIEW

Located off NE Palm Bay Rd with dedicated stop light

Less than 1 mile from the I-95 interchange

### JEFFERY T. ROBISON, CCIM

President | Broker  
321.722.0707 X13  
jeff@teamlbr.com

### J. BLAKE ROBISON

Retail Sales And Leasing Advisor  
321.722.0707 X18  
blake@teamlbr.com

### Lightle Beckner Robison, Inc.

321.722.0707 • teamlbr.com  
70 W. Hibiscus Blvd.,  
Melbourne, FL 32901

Information contained herein has been obtained through sources deemed reliable but cannot be guaranteed as to its accuracy. A purchaser or lessee is expected to verify all information to his/her own satisfaction. Zoning information subject to change and not warranted. Always confirm current requirements with local governing agencies.

# AVAILABLE SPACES

• 1320 Culver Dr. NE, Unit 5 Palm Bay, FL 32907

**Lease Rate:** \$16.00 SF/YR (\$3.49/NNN)      **Total Space** 2,760 SF  
**Lease Type:** \$3.49/NNN      **Lease Term:**

SPACE	SPACE USE	LEASE RATE	LEASE TYPE	SIZE (SF)	TERM	COMMENTS
Unit 5		\$16.00 SF/YR	\$3.49/NNN	2,760 SF	Negotiable	Previous cross fit gym

**JEFFERY T. ROBISON, CCIM**

President | Broker  
321.722.0707 X13  
jeff@teamlbr.com

**J. BLAKE ROBISON**

Retail Sales And Leasing Advisor  
321.722.0707 X18  
blake@teamlbr.com

**Lightle Beckner Robison, Inc.**

321.722.0707 • teamlbr.com  
70 W. Hibiscus Blvd.,  
Melbourne, FL 32901

Information contained herein has been obtained through sources deemed reliable but cannot be guaranteed as to its accuracy. A purchaser or lessee is expected to verify all information to his/her own satisfaction. Zoning information subject to change and not warranted. Always confirm current requirements with local governing agencies.



# ADDITIONAL PHOTOS

• 1320 Culver Dr. NE, Unit 5 Palm Bay, FL 32907



## JEFFERY T. ROBISON, CCIM

President | Broker  
321.722.0707 X13  
jeff@teamlbr.com

## J. BLAKE ROBISON

Retail Sales And Leasing Advisor  
321.722.0707 X18  
blake@teamlbr.com

## Lightle Beckner Robison, Inc.

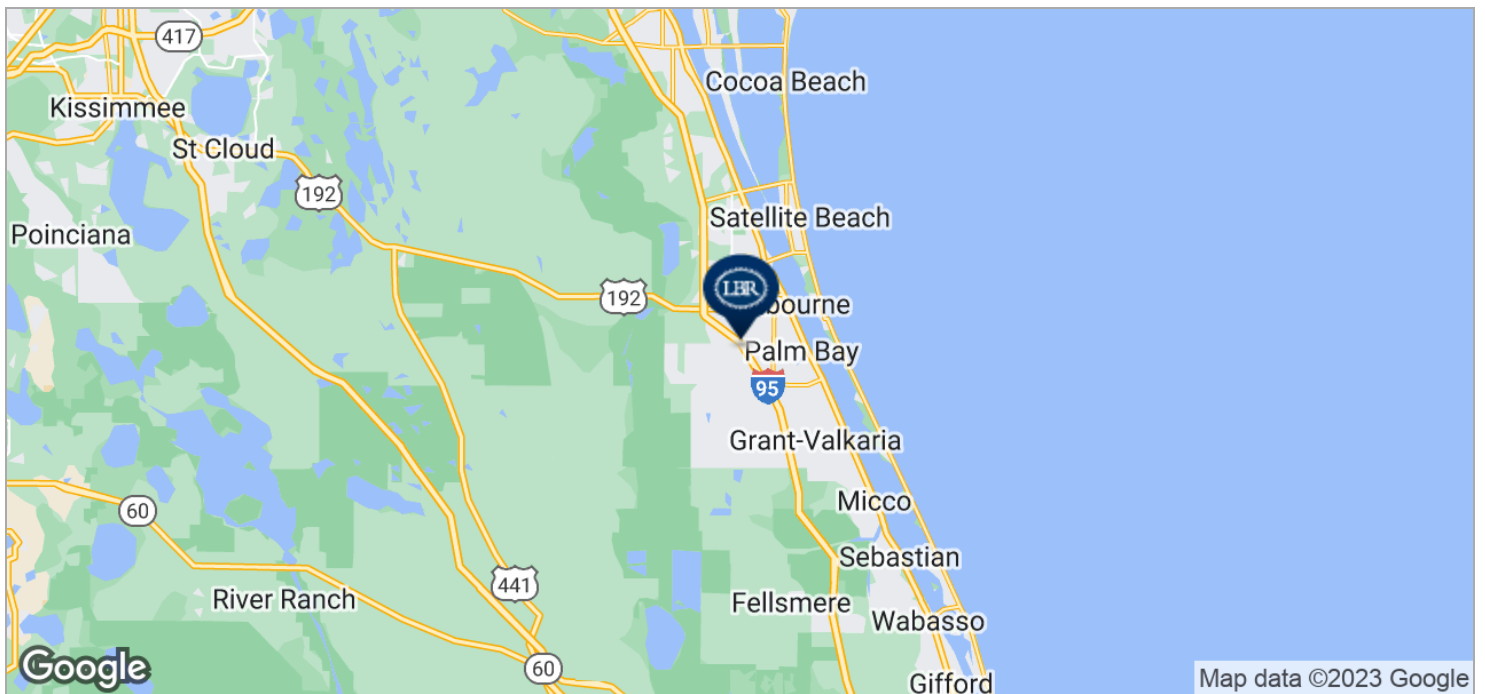
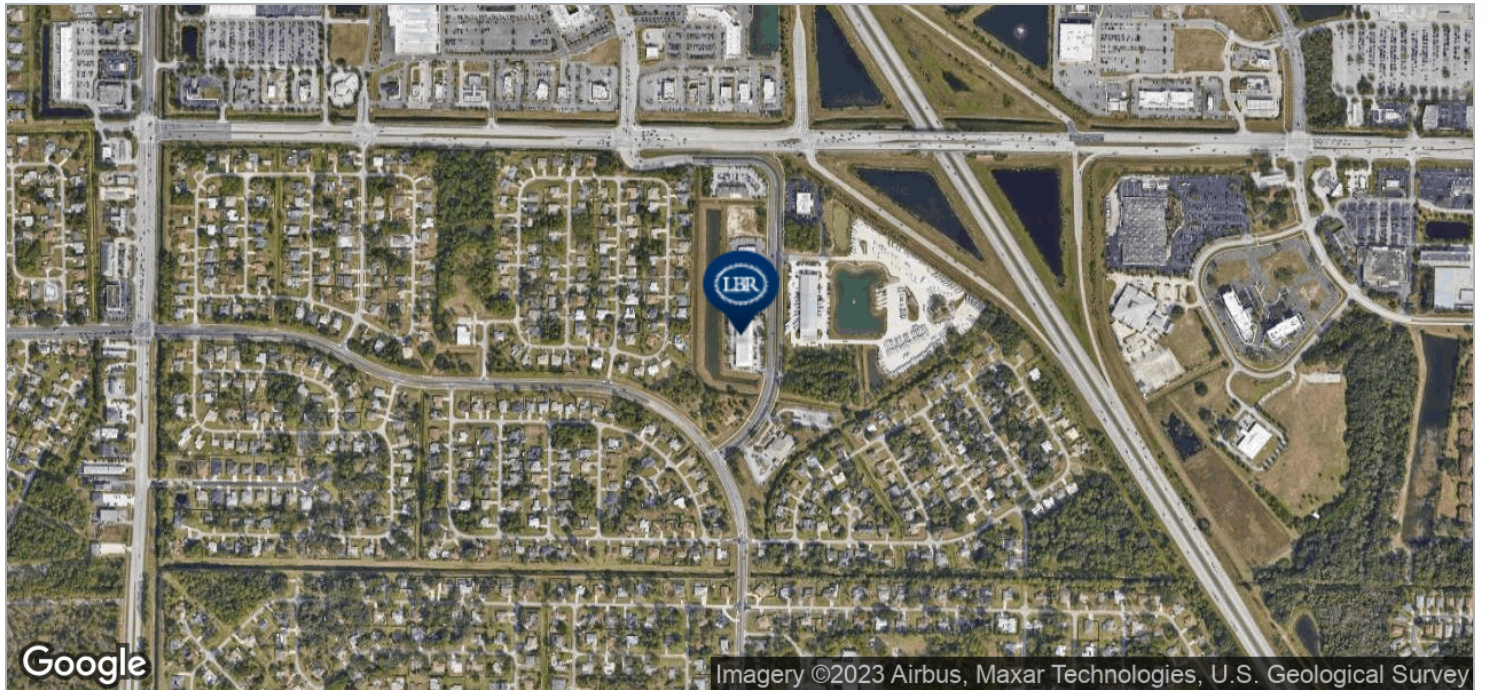
321.722.0707 • teamlbr.com  
70 W. Hibiscus Blvd.,  
Melbourne, FL 32901

Information contained herein has been obtained through sources deemed reliable but cannot be guaranteed as to its accuracy. A purchaser or lessee is expected to verify all information to his/her own satisfaction. Zoning information subject to change and not warranted. Always confirm current requirements with local governing agencies.



# LOCATION MAPS

• 1320 Culver Dr. NE, Unit 5 Palm Bay, FL 32907



## JEFFERY T. ROBISON, CCIM

President | Broker  
321.722.0707 X13  
jeff@teamlbr.com

## J. BLAKE ROBISON

Retail Sales And Leasing Advisor  
321.722.0707 X18  
blake@teamlbr.com

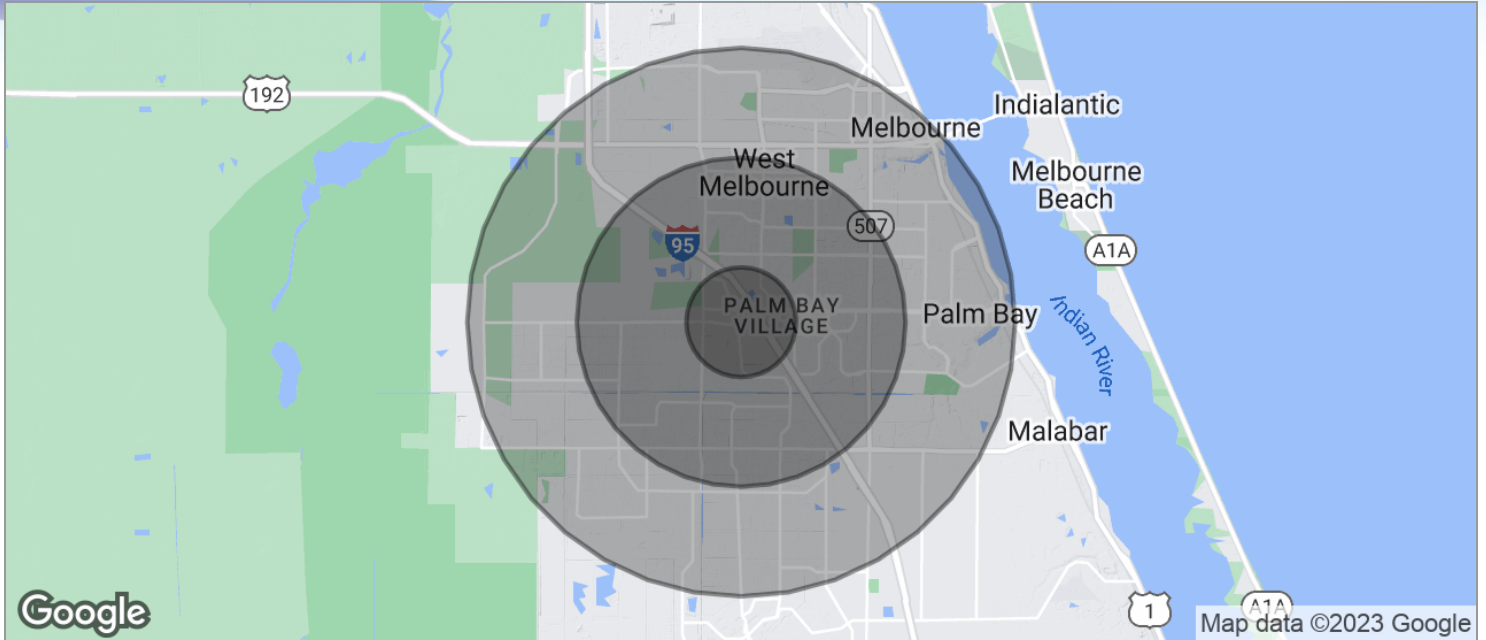
## Lightle Beckner Robison, Inc.

321.722.0707 • teamlbr.com  
70 W. Hibiscus Blvd.,  
Melbourne, FL 32901

Information contained herein has been obtained through sources deemed reliable but cannot be guaranteed as to its accuracy. A purchaser or lessee is expected to verify all information to his/her own satisfaction. Zoning information subject to change and not warranted. Always confirm current requirements with local governing agencies.

# DEMOGRAPHICS MAP

• 1320 Culver Dr. NE, Unit 5 Palm Bay, FL 32907



<b>POPULATION</b>	<b>1 MILE</b>	<b>3 MILES</b>	<b>5 MILES</b>
TOTAL POPULATION	6,019	71,112	141,071
MEDIAN AGE	46.3	43.8	43.7
MEDIAN AGE (MALE)	44.4	40.8	41.0
MEDIAN AGE (FEMALE)	44.0	46.1	45.5

<b>HOUSEHOLDS &amp; INCOME</b>	<b>1 MILE</b>	<b>3 MILES</b>	<b>5 MILES</b>
TOTAL HOUSEHOLDS	2,578	29,446	59,079
# OF PERSONS PER HH	2.3	2.4	2.4
AVERAGE HH INCOME	\$61,877	\$61,302	\$58,297
AVERAGE HOUSE VALUE	\$184,414	\$179,921	\$175,766

\* Demographic data derived from 2020 ACS - US Census

## JEFFERY T. ROBISON, CCIM

President | Broker  
321.722.0707 X13  
jeff@teamlbr.com

## J. BLAKE ROBISON

Retail Sales And Leasing Advisor  
321.722.0707 X18  
blake@teamlbr.com

## Lightle Beckner Robison, Inc.

321.722.0707 • teamlbr.com  
70 W. Hibiscus Blvd.,  
Melbourne, FL 32901

Information contained herein has been obtained through sources deemed reliable but cannot be guaranteed as to its accuracy. A purchaser or lessee is expected to verify all information to his/her own satisfaction. Zoning information subject to change and not warranted. Always confirm current requirements with local governing agencies.