

# JR'S AUTOMOTIVE BUILDING

31345 CR 437  
SORRENTO, FL 32776

Trish Leisner, CCIM  
O: 877.518.5263 x438 | C: 352.267.6216  
trish.leisner@svn.com



# Property Summary



## OFFERING SUMMARY

<b>Sale Price:</b>	<b>\$495,000</b>
Building Size:	2,180 SF
Lot Size:	0.24 Acres
<b>Price / SF:</b>	<b>\$227.06</b>
Year Built:	1984
Zoning:	CP
Market:	Orlando
Submarket:	Sorrento/Lake County
Traffic Count:	8,600
APN:	1124026

## PROPERTY HIGHLIGHTS

- Automotive Repair - 4 Bays
- Paint Booth
- Major Highway Intersections close by
- Corner Lot

# Property Description



## PROPERTY DESCRIPTION

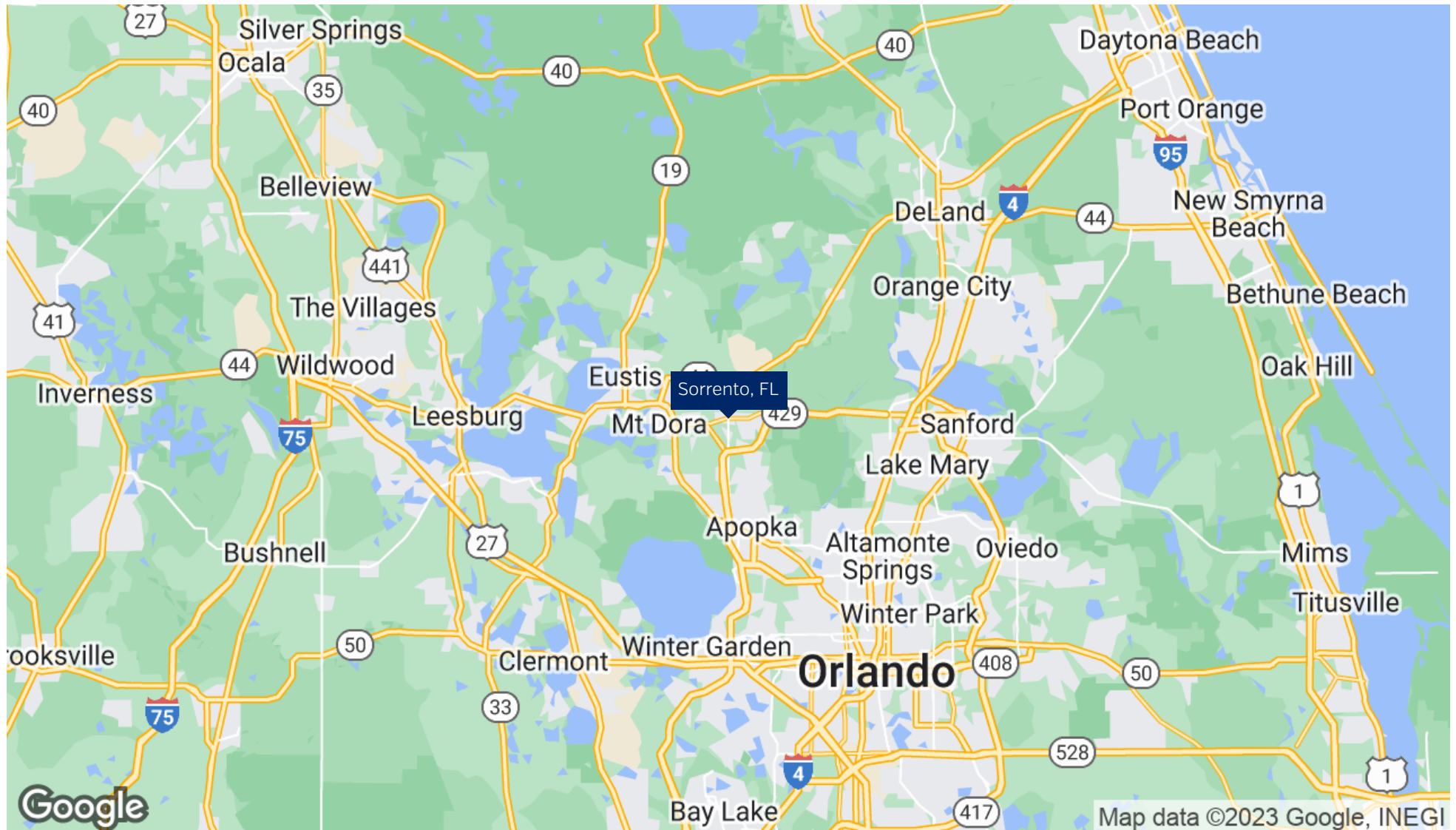
For sale is a successful 4-bay auto shop and paint booth, along with its building. Located in a prime corner spot just south of Mt Dora and Apopka, the building is situated on CR 437 and boasts great highway frontage for advertising. Additionally, it is only a block away from CR 46 and a few miles from FL Highway 453. The building is zoned for commercial, office, medical, or retail use, offering a variety of options. Inside, there are 4 car bays, one lift, a drive-through opposing, an office for customer handling, and a break room for staff. The fenced property also includes extra storage areas.

## LOCATION DESCRIPTION

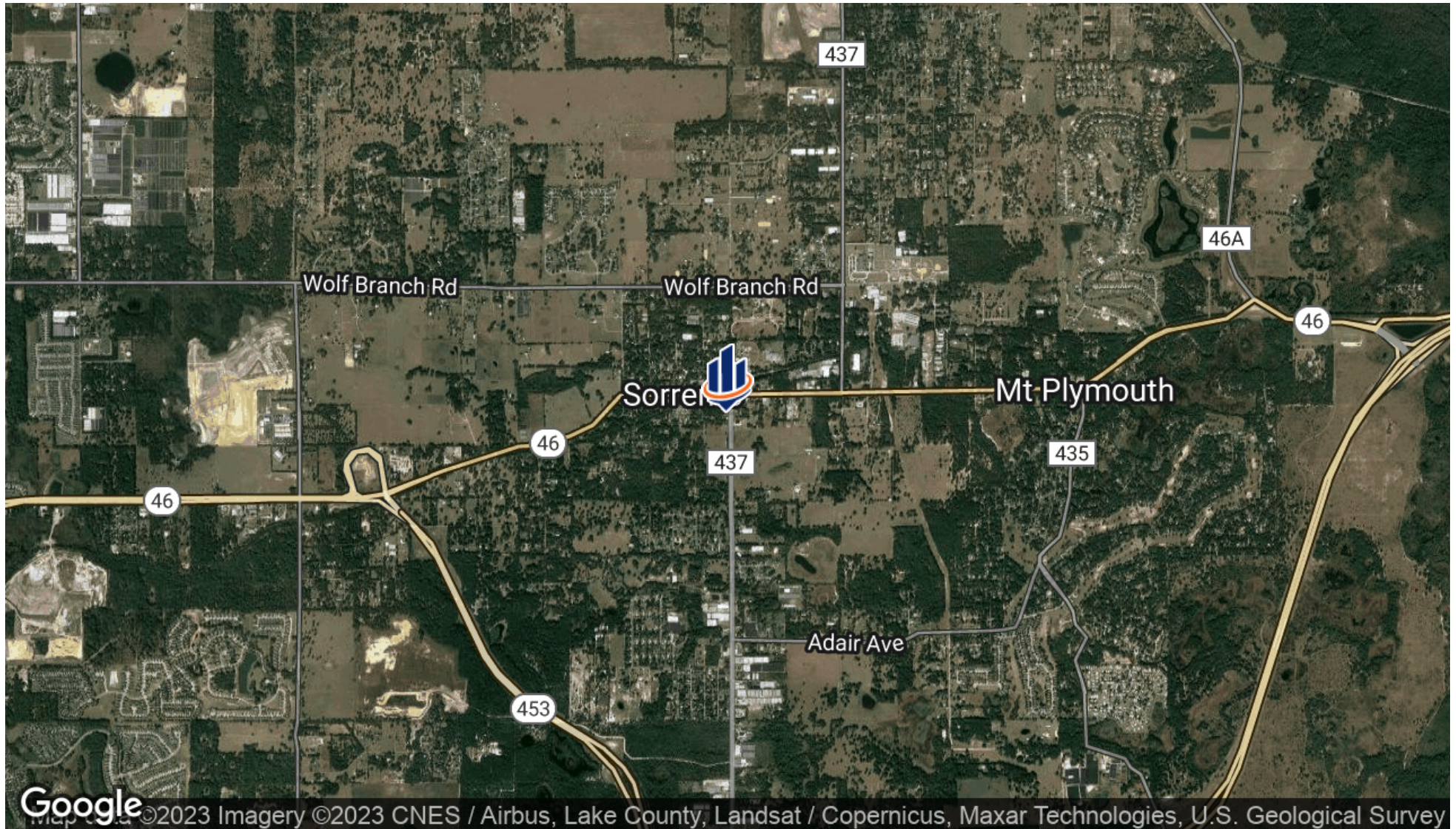
Cr 46 to south on CR 437-Plymouth Sorrento.  
Property on the right.



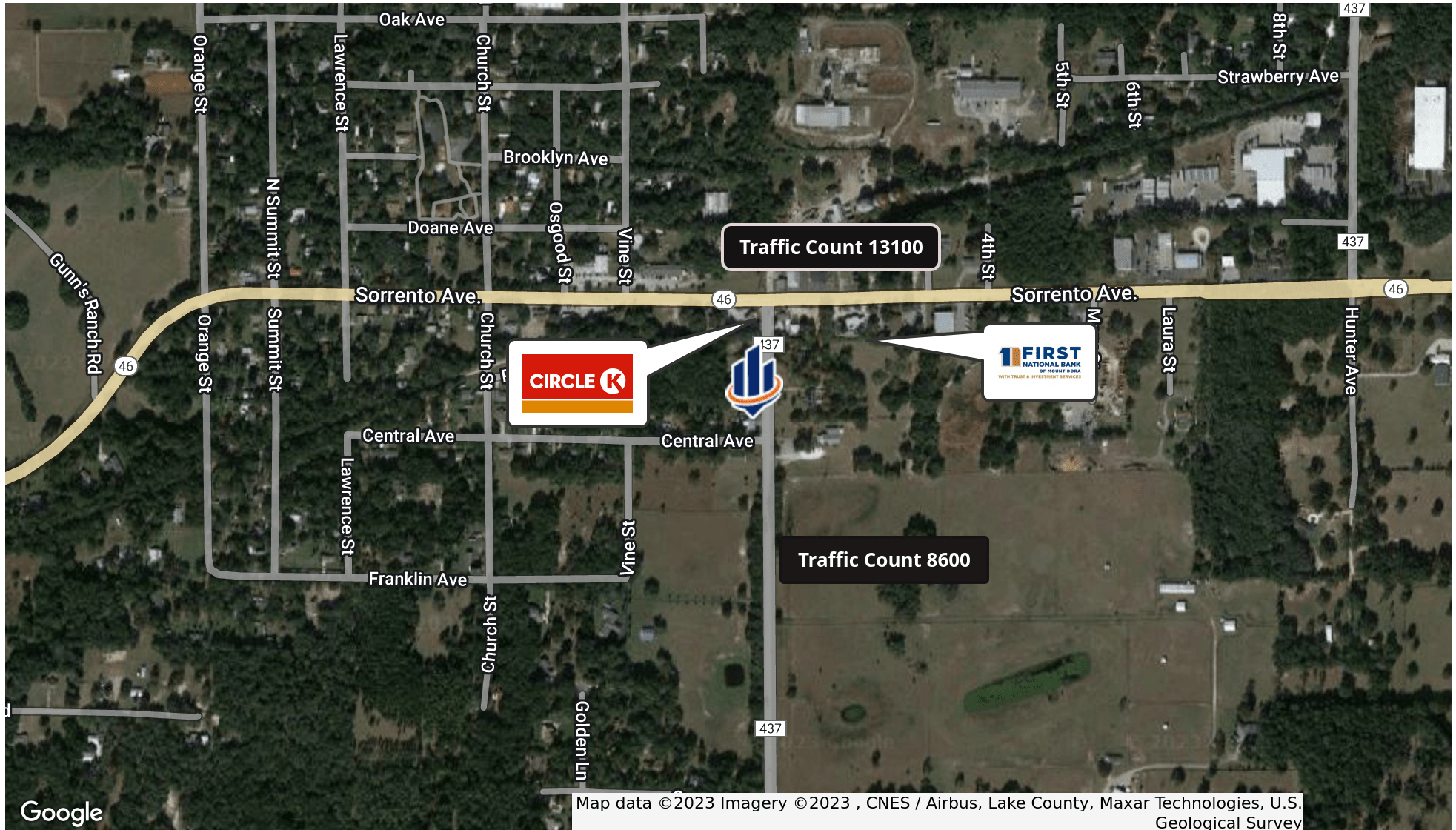
# Regional Map



# Location Map



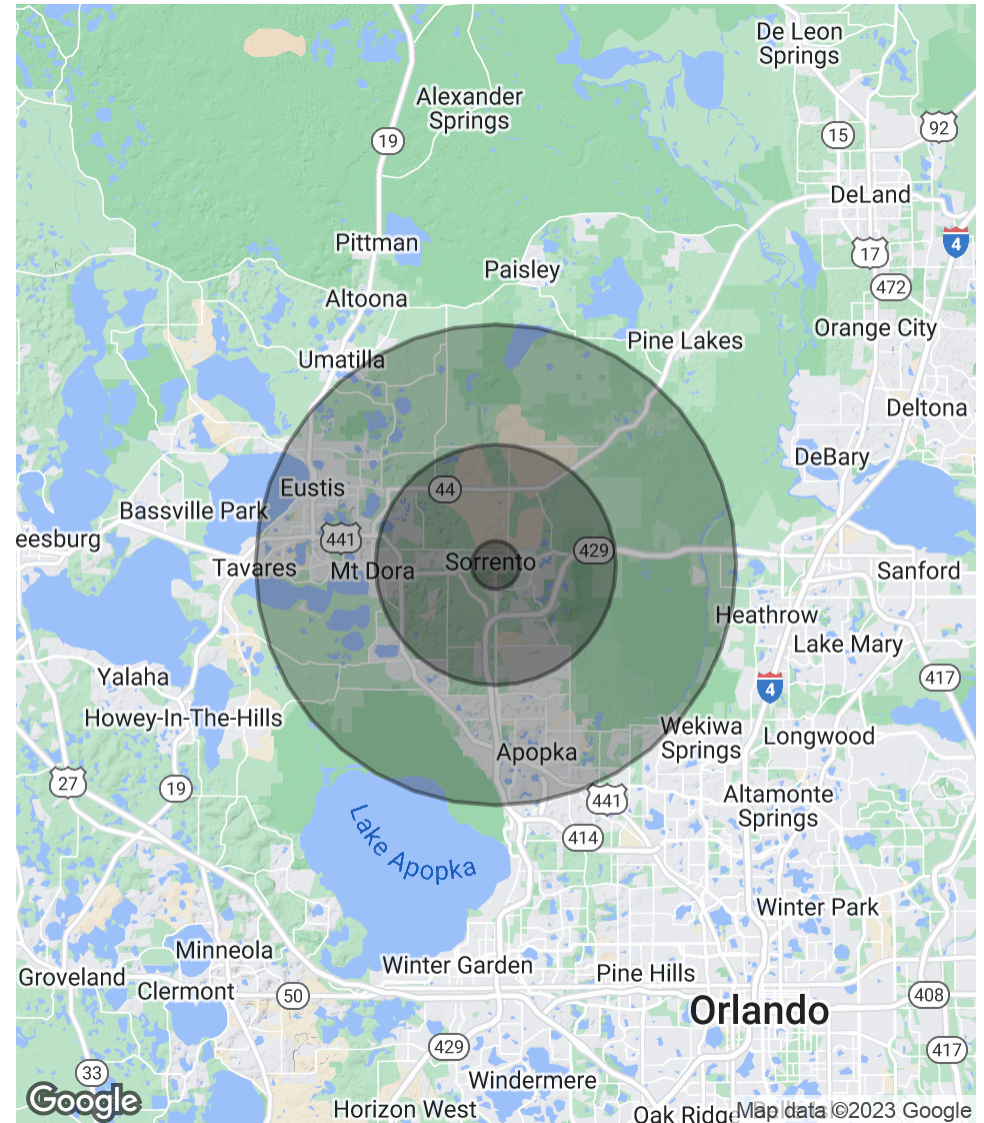
# Location Map



# Demographics Map & Report

<b>POPULATION</b>	<b>1 MILE</b>	<b>5 MILES</b>	<b>10 MILES</b>
Total Population	659	18,515	174,293
Average Age	41.8	41.3	43.6
Average Age (Male)	42.3	37.9	42.3
Average Age (Female)	42.3	44.5	44.9
<b>HOUSEHOLDS &amp; INCOME</b>	<b>1 MILE</b>	<b>5 MILES</b>	<b>10 MILES</b>
Total Households	251	6,931	68,000
# of Persons per HH	2.6	2.7	2.6
Average HH Income	\$86,194	\$88,104	\$96,531
Average House Value	\$343,953	\$289,428	\$308,964

\* Demographic data derived from 2020 ACS - US Census





## LAKE COUNTY FLORIDA

Founded	1887	Density	385.2 [2019]
County Seat	Tavares	Population	367,118 [2019]
Area	953 sq mi	Website	lakecountyfl.gov

Lake County is part of the Orlando-Kissimmee-Sanford, FL Metropolitan Statistical Area and its largest city is Clermont. It was created in 1887 from portions of Sumter and Orange counties and named for the many lakes contained within its borders. In the 1800s, the two main industries in the area were growing cotton and breeding cattle. In the latter part of the 19th century, people started to grow citrus trees. Throughout the 1940s and 50s, citrus production increased and grew into the area's leading industry. Today, Lake County is the 18th largest county in Florida, tripling in size in the past 15 years. It is centrally positioned with access to US Hwy 27, I-75, Florida Turnpike, and the new Florida 429 Beltway, an ideal location for industrial distribution, warehousing, and manufacturing. The Wellness Way area [7 miles south of Clermont], is also an area of significant economic growth



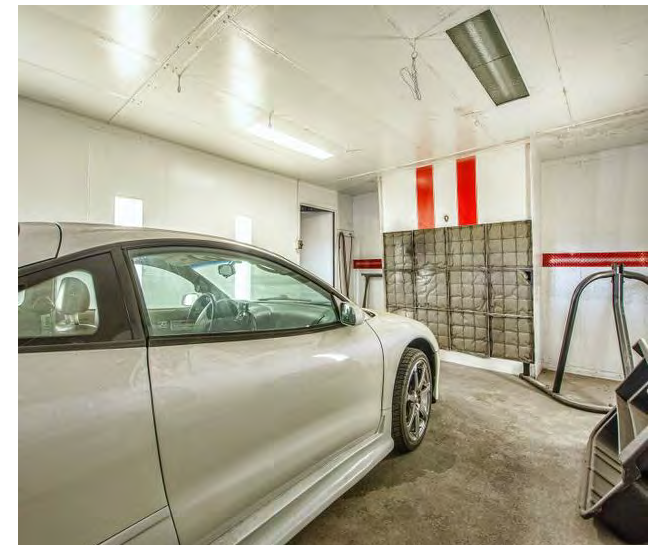
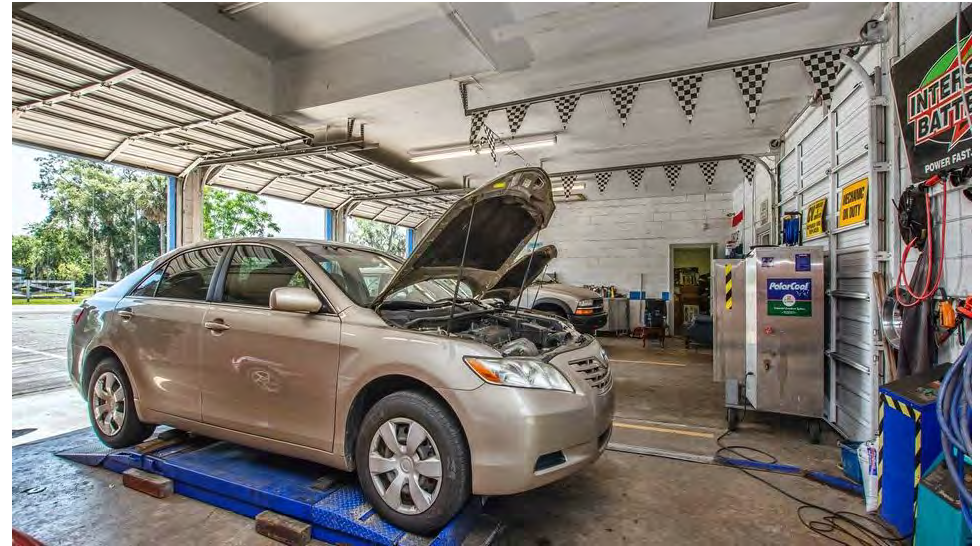
# Additional Photos



# Additional Photos



# Additional Photos





**TRISH LEISNER, CCIM**

Senior Advisor

trish.leisner@svn.com

Direct: 877.518.5263 x438 | Cell: 352.267.6216

FL #BK3185853

## PROFESSIONAL BACKGROUND

Trish Leisner, CCIM is a Senior Advisor at SVN | Saunders Ralston Dantzler Real Estate in Orlando, Florida.

Trish is a seasoned real estate professional with more than 30 years of experience in the industry. In 2021, she joined our brokerage to expand her commercial services offerings through our marketing strategies, advisor team, and the SVN® international network.

Trish is the founder and broker of RealTeam Realty, Inc. Opened in 2011, the firm is in downtown Clermont, just west of Orlando in Central Florida. Her brokerage team provides services in commercial, land, farms, and residential.

Trish works across four fast-growing central Florida counties: Lake, Orange, Sumter, and Polk. She is a valuable source of expertise for properties in this part of the state. She is originally from Maryland's Chesapeake Bay, moving to Florida 20 years ago. Her varied professional and business background includes:

- Small Area Planner - Anne Arundel County, MD 1998
- Owned two retail stores for 15 years.
- Owned, developed, and managed commercial properties in Maryland and Florida
- Worked in multiple Nuclear Power Stations in Quality Control (1980-1985)
- Farmer and rancher

### SVN | Saunders Ralston Dantzler

605 E. Robinson St.  
Orlando, FL 32801  
863.648.1528

# One of America's **BEST BROKERAGES**



One of America's  
Best Brokerages



**APEX Top  
National Producer**  
Dean Saunders,  
ALC, CCIM



**Most Influential  
Business Leaders**  
Dean Saunders,  
ALC, CCIM



**Largest Commercial  
Real Estate Brokers  
in Tampa Bay**



**Ranked 210 on Inc.  
5000 Regional List**



For more information visit [www.SVNsaunders.com](http://www.SVNsaunders.com)

**HEADQUARTERS**

1723 Bartow Rd  
Lakeland, FL 33801  
863.648.1528

**ORLANDO**

605 E Robinson Street, Suite 410  
Orlando, Florida 32801  
386.438.5896

**NORTH FLORIDA**

356 NW Lake City Avenue  
Lake City, Florida 32055  
386.438.5896

**GEORGIA**

218 W Jackson Street, Suite 203  
Thomasville, Georgia 31792  
229.299.8600

©2023 SVN | Saunders Ralston Dantzler Real Estate. All SVN® Offices Independently Owned and Operated SVN | Saunders Ralston Dantzler Real Estate is a full-service land and commercial real estate brokerage with over \$3 billion in transactions representing buyers, sellers, investors, institutions, and landowners since 1996. We are recognized nationally as an authority on all types of land, including agriculture, ranch, recreation, residential development, and international properties. Our commercial real estate services include marketing, property management, leasing and tenant representation, valuation, business brokerage, and advisory and counseling services for office, retail, industrial, and multi-family properties. Our firm also features an auction company, forestry division, international partnerships, hunting lease management, and extensive expertise in conservation easements. Located at the center of Florida's I-4 corridor, we provide proven leadership and collaborative expertise backed by the strength of the SVN® global platform. To learn more, visit [SVNsaunders.com](http://SVNsaunders.com).

