

Bank Branch For Sale

1051 Milledgeville Road (Highway 441 N)
Milledgeville, GA 31061 (Putnam County)



Lot Size: 1.56 Acres
Building Size: 2,231 SF
Frontage: 485'
Zoning: C-2
Utilities: County water & septic
Year built: 1995, Remodeled 2012
Traffic: 12,400 vehicles per day
Property Taxes: \$11,558.57 (2020 est.)
Drive Through: 3 lanes
Parking: 31 spaces
Ceiling Height: 12'

Location: Property is located at the corner of Highway 441 N and Jackson Road, and is near the Putnam-Baldwin County line.

- Highlights:**
- Convenient to both Milledgeville & Eatonton.
 - Wood & stucco construction exterior. Interior has foyer, 3 offices, lobby, teller room, 2 restrooms, break room, and mech & HVAC room.
 - Ideal location for bank, credit union, utility company, or professional office.
 - Neighbors include Putnam County Sheriff's Office and Citgo.

2023 Demographics

	3 mile	5 mile	10 mile
Population	8,141	18,139	52,932
Median Age	37.7	38.3	38.3
Avg. HHI	\$66,318	\$71,525	\$80,555

Sale Price: \$599,000

**FOR MORE
INFORMATION
CONTACT**

Trip Wilhoit, CCIM, ALC
478-746-9421 (O)
478-960-4080 (C)
trip@fickling.com

Patty Burns, CCIM, ALC
478-746-9421 (O)
478-951-5100 (C)
patty@fickling.com

georgiacommercialrealestate.net | commercial.fickling.com

577 Mulberry St, Suite 1100 * P.O. Box 310 * Macon, GA 31202 | Phone (478) 746-9421 | Fax (478) 742-2015

This information is from resources deemed to be reliable, no warranties or guarantees for accuracy are made by Fickling and Company

Bank Branch For Sale

1051 Milledgeville Road (Highway 441 N)
Milledgeville, GA 31061 (Putnam County)



Photos



**FOR MORE
INFORMATION
CONTACT**

Trip Wilhoit, CCIM, ALC
478-746-9421 (O)
478-960-4080 (C)
trip@fickling.com

Patty Burns, CCIM, ALC
478-746-9421 (O)
478-951-5100 (C)
patty@fickling.com

georgiacommercialrealestate.net | commercial.fickling.com

577 Mulberry St, Suite 1100 * P.O. Box 310 * Macon, GA 31202 | Phone (478) 746-9421 | Fax (478) 742-2015
This information is from resources deemed to be reliable, no warranties or guarantees for accuracy are made by Fickling and Company

Bank Branch For Sale

1051 Milledgeville Road (Highway 441 N)

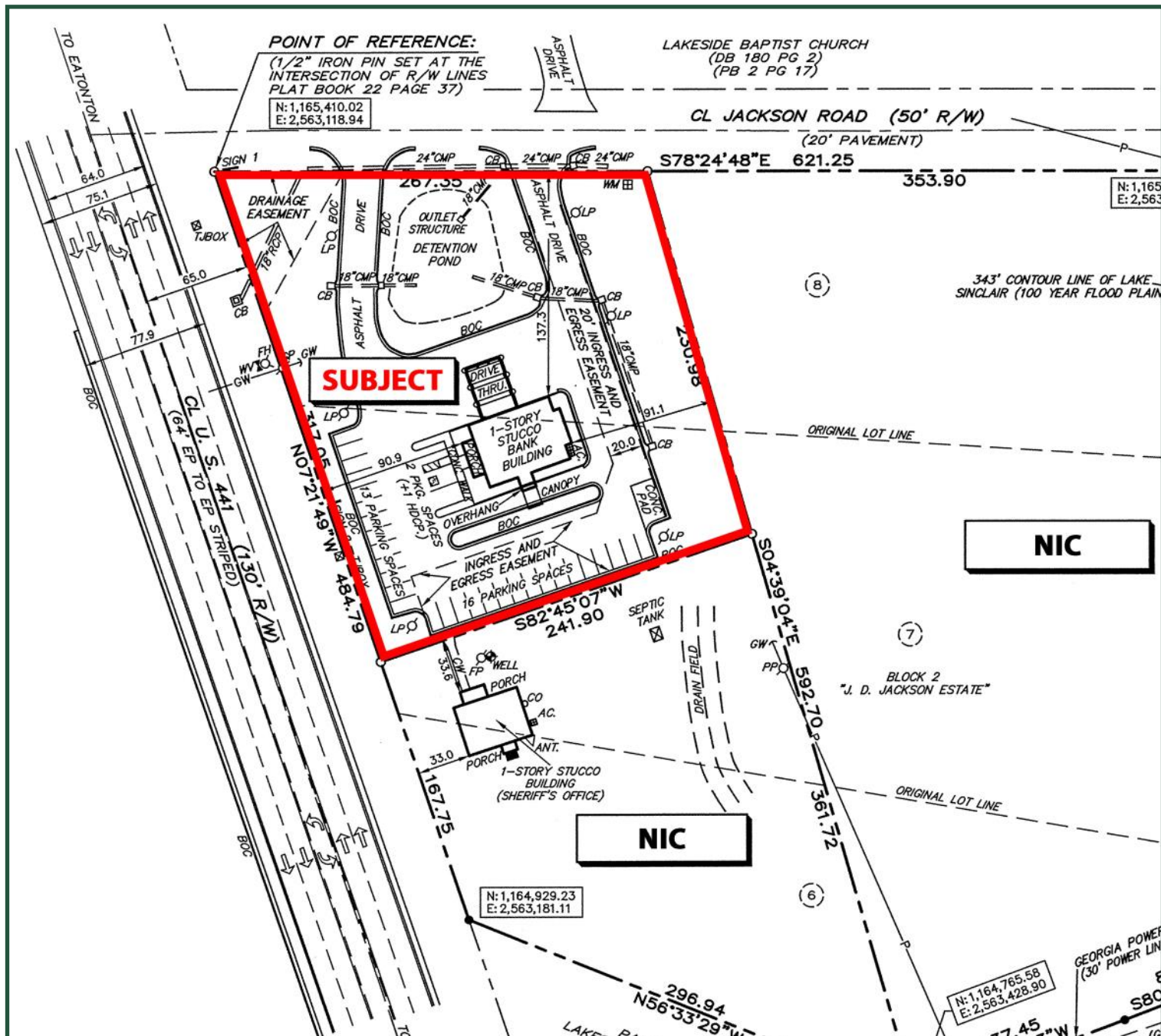
Milledgeville, GA 31061 (Putnam County)



**FICKLING
& COMPANY**

A Full Service Real Estate Company
commercial.fickling.com

Plat



**FOR MORE
INFORMATION
CONTACT**

Trip Wilhoit, CCIM, ALC
478-746-9421 (O)
478-960-4080 (C)
trip@fickling.com

Patty Burns, CCIM, ALC
478-746-9421 (O)
478-951-5100 (C)
patty@fickling.com

georgiacommercialrealestate.net | commercial.fickling.com

577 Mulberry St, Suite 1100 * P.O. Box 310 * Macon, GA 31202 | Phone (478) 746-9421 | Fax (478) 742-2015

This information is from resources deemed to be reliable, no warranties or guarantees for accuracy are made by Fickling and Company

Bank Branch For Sale

1051 Milledgeville Road (Highway 441 N)
Milledgeville, GA 31061 (Putnam County)



Aerial



**FOR MORE
INFORMATION
CONTACT**

Trip Wilhoit, CCIM, ALC
478-746-9421 (O)
478-960-4080 (C)
trip@fickling.com

Patty Burns, CCIM, ALC
478-746-9421 (O)
478-951-5100 (C)
patty@fickling.com

georgiacommercialrealestate.net | commercial.fickling.com

577 Mulberry St, Suite 1100 * P.O. Box 310 * Macon, GA 31202 | Phone (478) 746-9421 | Fax (478) 742-2015

This information is from resources deemed to be reliable, no warranties or guarantees for accuracy are made by Fickling and Company