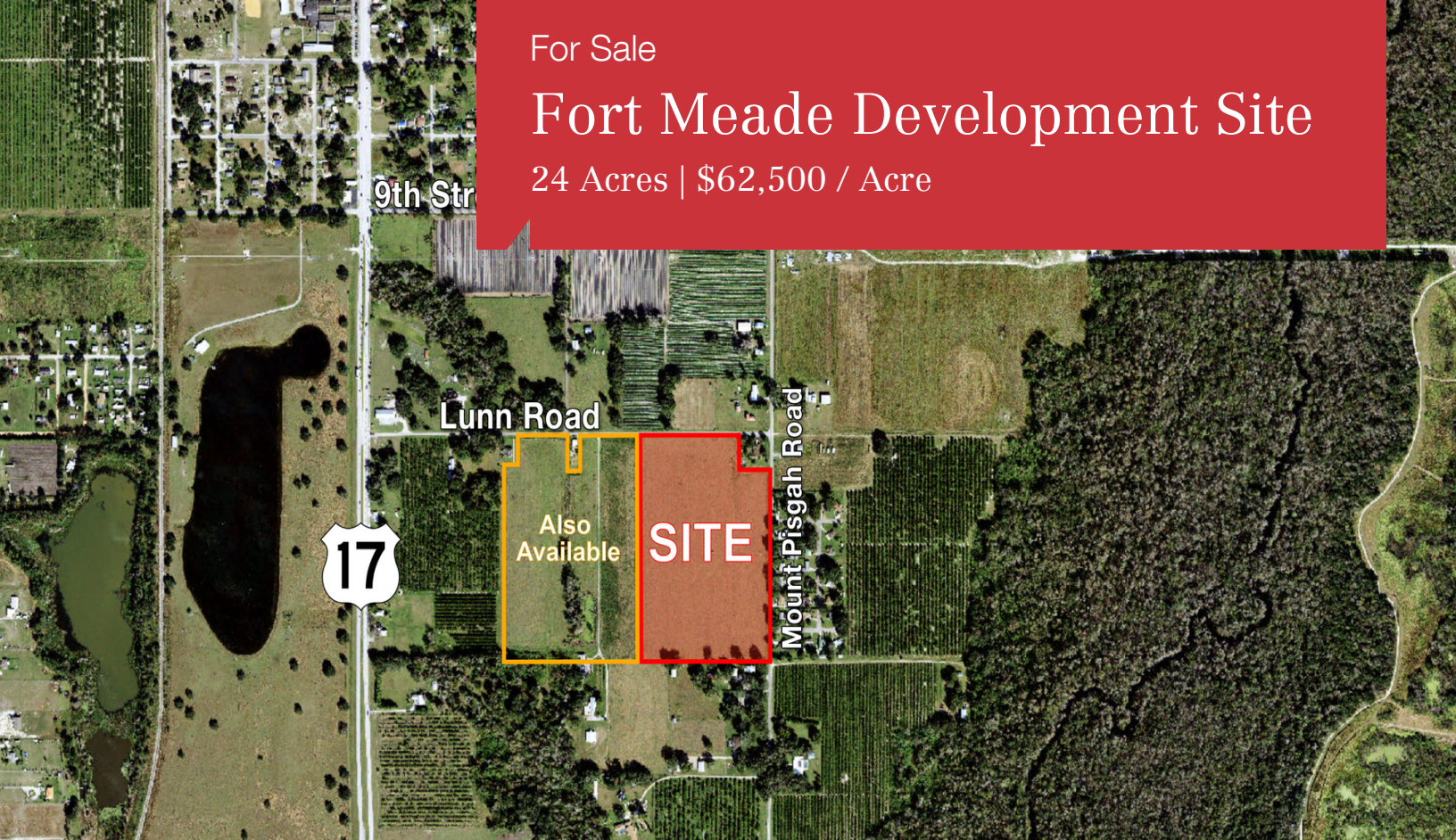


For Sale

# Fort Meade Development Site

24 Acres | \$62,500 / Acre



## Lunn Road / Mount Pisgah Road

Fort Meade, Florida 33841

### Property Highlights

- Residential development property near historic Downtown Fort Meade
- Excellent site for manufactured home community or single family subdivision
- Zoning: Low density residential
- Annexation and re-zoning in progress for Fort Meade jurisdiction
- Adjacent 26 acres may also be acquired
- Utility connections nearby
- One-half mile to US Highway 17
- One mile to Peace River Trail



**Sale Price: \$1,500,000**

For more information

**Jon D. Walls, RLA, MiCP**

O: 407 949 0745

[jwalls@realvest.com](mailto:jwalls@realvest.com)

# Potential Site Plan





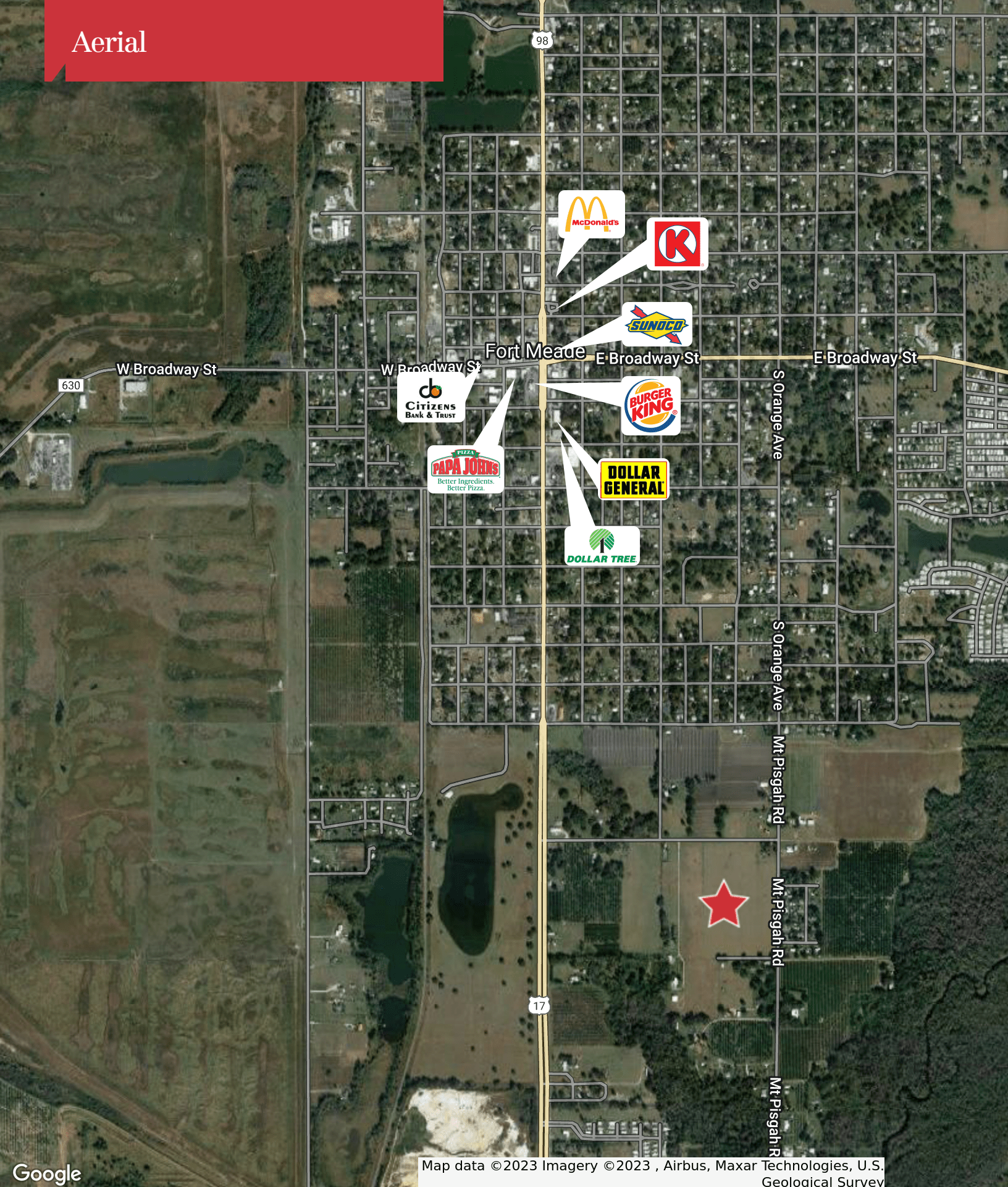
View Looking Southeast from Lunn Road



View Looking Southwest from Lunn Road



View Looking Northwest from Mt. Pisgah Road



Google

Map data ©2023 Imagery ©2023 , Airbus, Maxar Technologies, U.S. Geological Survey

# Location Maps

