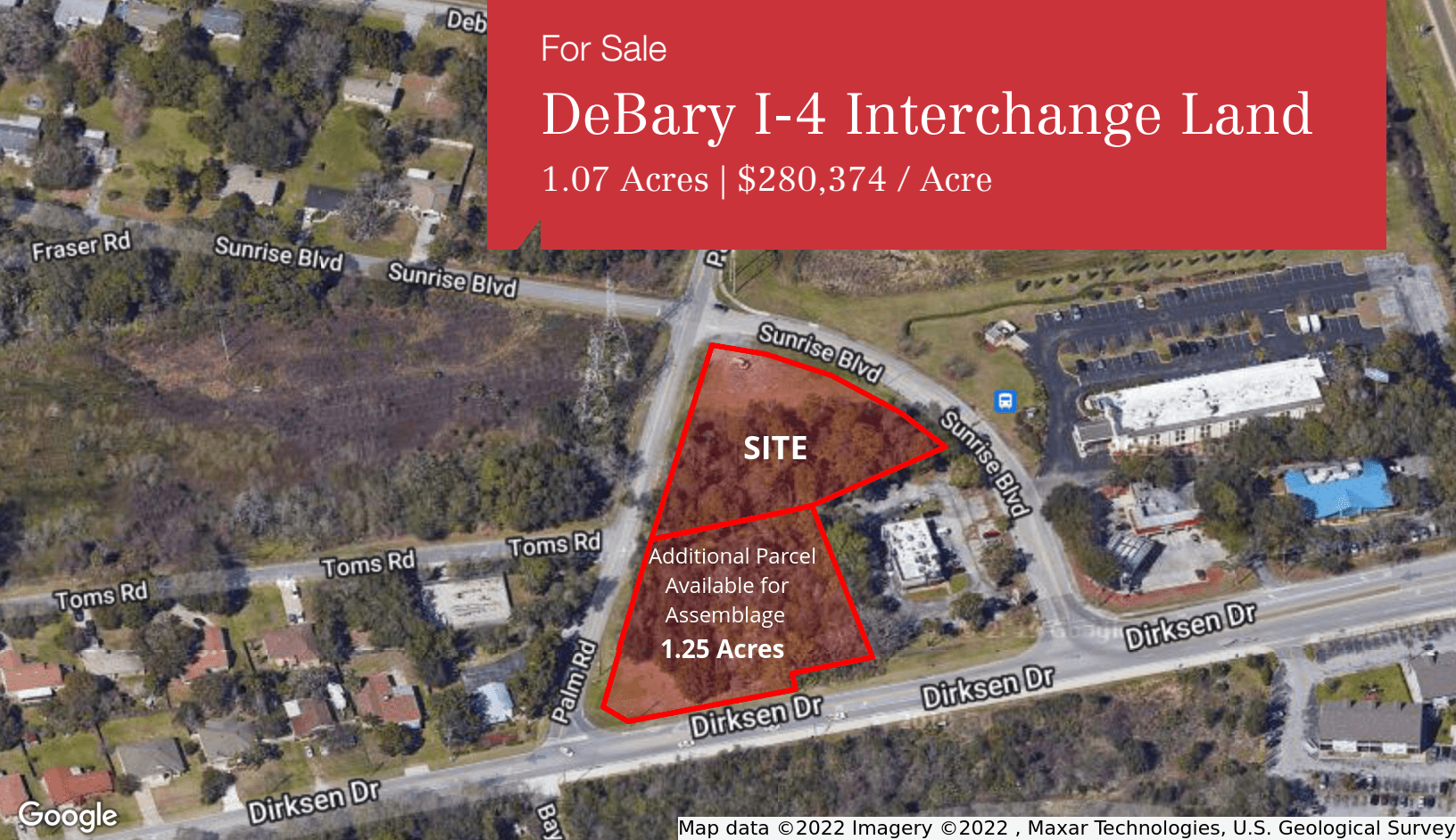


For Sale

DeBary I-4 Interchange Land

1.07 Acres | \$280,374 / Acre



Map data ©2022 Imagery ©2022 , Maxar Technologies, U.S. Geological Survey

301 Sunrise Blvd

DeBary, Florida 32713

Property Highlights

- 1.07± acre interchange retail location
- Corner lot just off Dirksen Drive
- Offsite retention
- Additional parcel available
- 1,000 feet west of the I-4 and Dirksen Drive Interchange
- 104,000 AADT along I-4
- Zoning: B-6 Highway Interchange Commercial



Sale Price: \$300,000

Demographics

	1 Mile	3 Miles	5 Miles
Total Households	1,353	12,482	35,702
Total Population	3,405	31,097	90,957
Average HH Income	\$61,952	\$60,533	\$57,094

For more information

Steve Costa

O: 386 238 3600
scosta@realvest.com



05.25.23

The information contained herein has been given to us by the owner of the property or other sources we deem reliable. We have no reason to doubt its accuracy, but we do not guarantee it. All information should be verified prior to purchase or lease. Unless otherwise noted, the property is being offered as-is, where is, with all faults.

444 Seabreeze Blvd, Suite 1000
Daytona Beach, FL 32118

386 238 3600 tel

nairealvest.com

Retailer Map



Travelodge by Wyndham Deltona

Lake Monroe

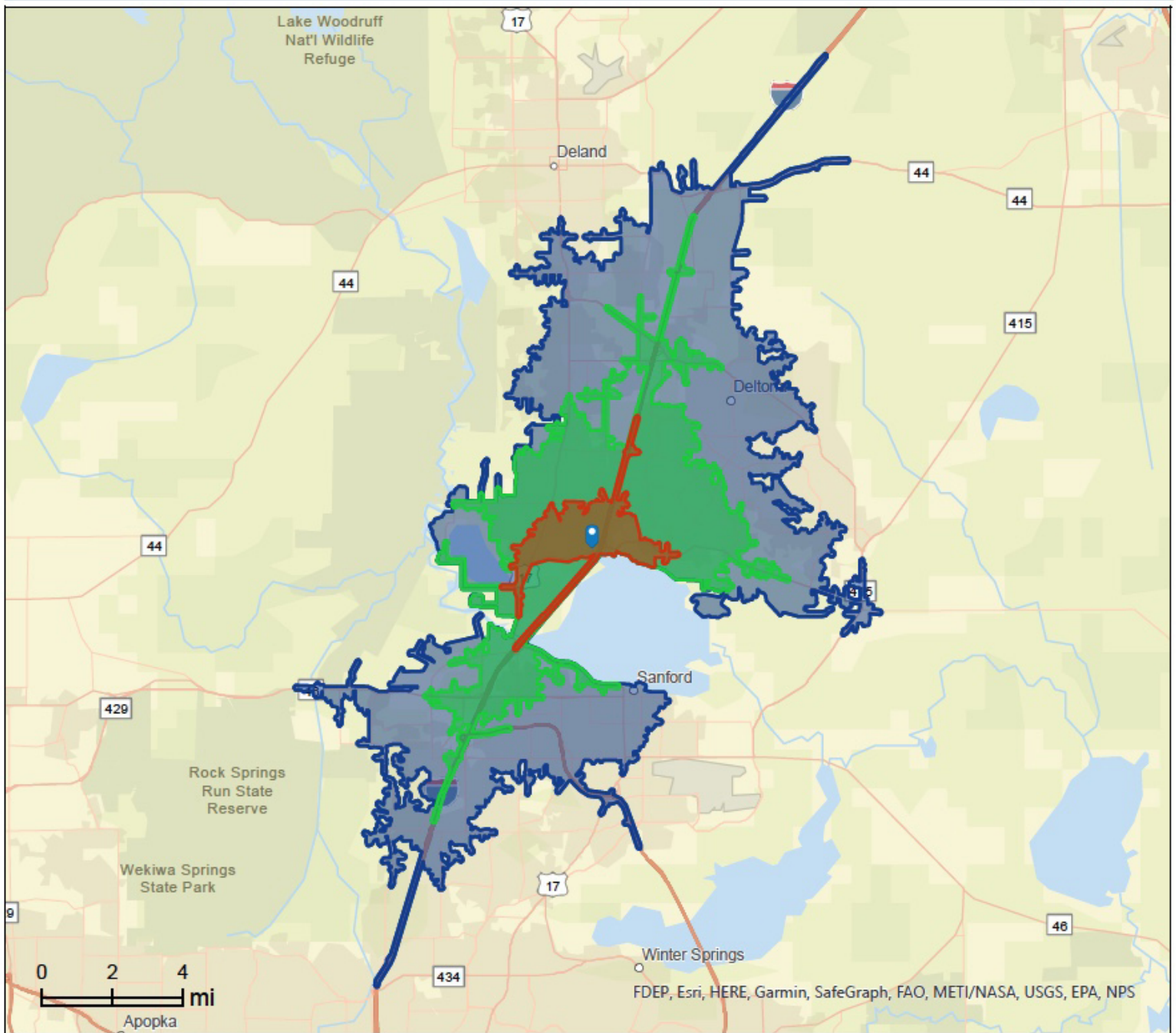
Google

Map data ©2022 Google Imagery ©2022 , Lake County, Landsat / Copernicus, Maxar Technologies, U.S. Geological Survey

Drive-Time Map

301 Sunrise Blvd, DeBary, Florida, 32713
Drive Time: 5, 10, 15 minute radii

Site Details Map
Latitude: 28.87241
Longitude: -81.28805



This site is located in:

City: DeBary
County: Volusia County
State: Florida
ZIP Code: 32713
Census Tract: 12127090902
Census Block Group: 121270909024
CBSA: Deltona-Daytona Beach-Ormond Beach, FL Metropolitan Statistical Area

Location Maps

