

DUNLAWTON CENTRE | OFFICE CONDO FOR SALE



PROPERTY DESCRIPTION

1,950 SF Office Condo For Sale in Dunlawton Center.
Features 7 offices, 2 restrooms, a breakroom, reception area, and lobby.
Great for Medical and Professional Use.
Monument Sign.
Conveniently located just east of Interstate 95.
Near Super Target, Lowe's Home Improvement, BJ's Wholesale Club, and LA Fitness.
The space is move-in ready and available for immediate occupancy.
Condo Fees \$1,466.31 per quarter.

LOCATION DESCRIPTION

Located on Dunlawton Avenue east of Interstate 95.

LOCATION ADDRESS

1730 Dunlawton Avenue, Suite 2
Port Orange, FL 32127

JOHN W. TROST, CCIM

Principal | Senior Advisor
O: 386.301.4581 | C: 386.295.5723
john.trost@svn.com

OFFERING SUMMARY

SALE PRICE:	\$525,000
AVAILABLE SF:	1,950 SF
YEAR BUILT:	2003
PARCEL NO:	6317-33-01-0020
TRAFFIC COUNT:	52,000 AADT
ZONING:	PO, Professional Office

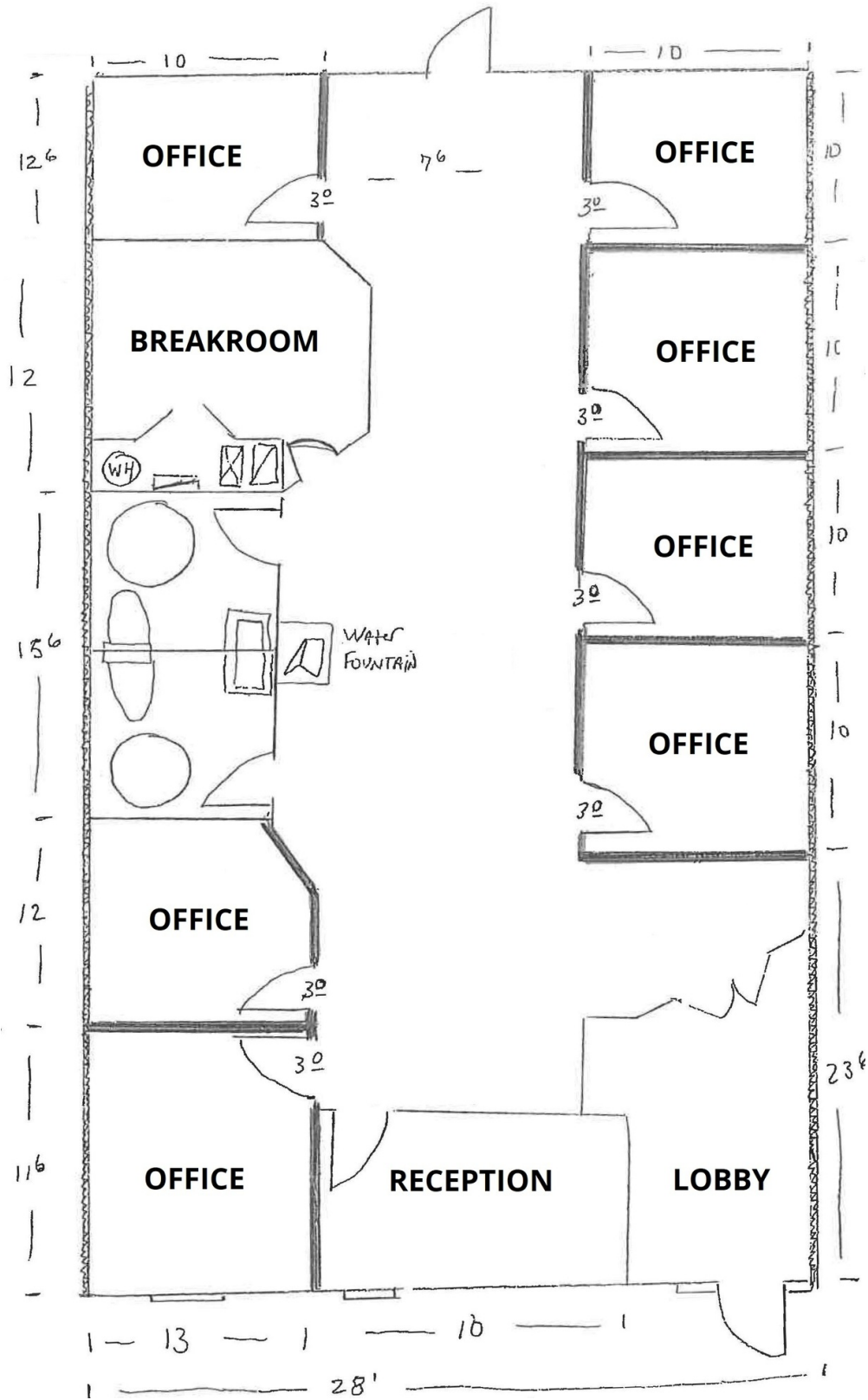
DEMOGRAPHICS	1 MILE	3 MILES	5 MILES
TOTAL HOUSEHOLDS	3,383	27,660	54,818
TOTAL POPULATION	7,668	58,408	105,388
AVERAGE HH INCOME	\$69,311	\$60,116	\$57,290

ADDITIONAL PHOTOS



JOHN W. TROST, CCIM
Principal | Senior Advisor
O: 386.301.4581 | C: 386.295.5723
john.trost@svn.com

FLOOR PLAN

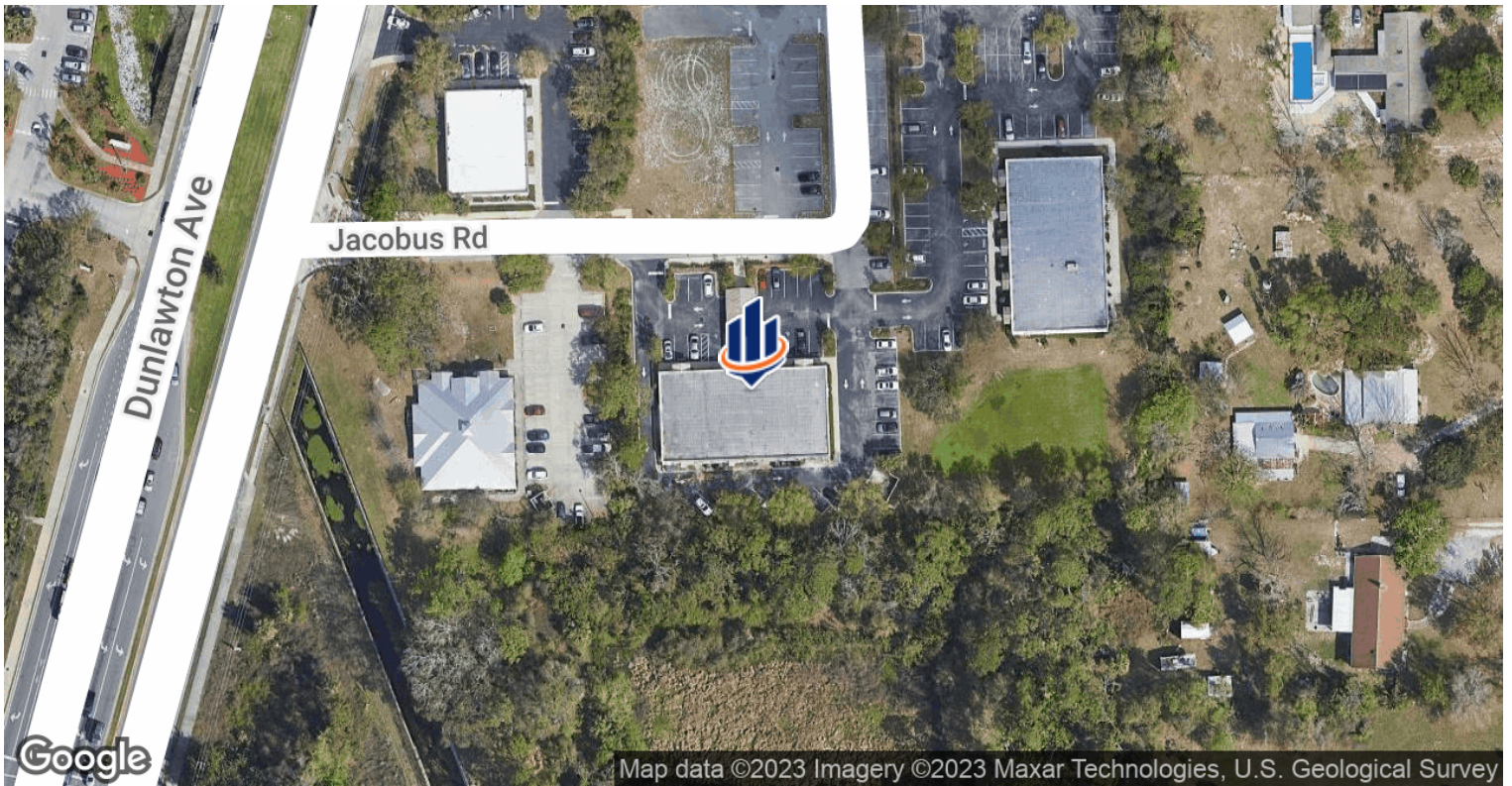


JOHN W. TROST, CCIM

Principal | Senior Advisor

O: 386.301.4581 | C: 386.295.5723

john.trost@svn.com



JOHN W. TROST, CCIM
 Principal | Senior Advisor
 O: 386.301.4581 | C: 386.295.5723
 john.trost@svn.com

DUNLAWTON CENTER | OFFICE CONDO FOR SALE | 1730 Dunlawton Avenue, Suite 2 Port Orange, FL 32127

