

PROFESSIONAL CONDO SUITE FOR LEASE

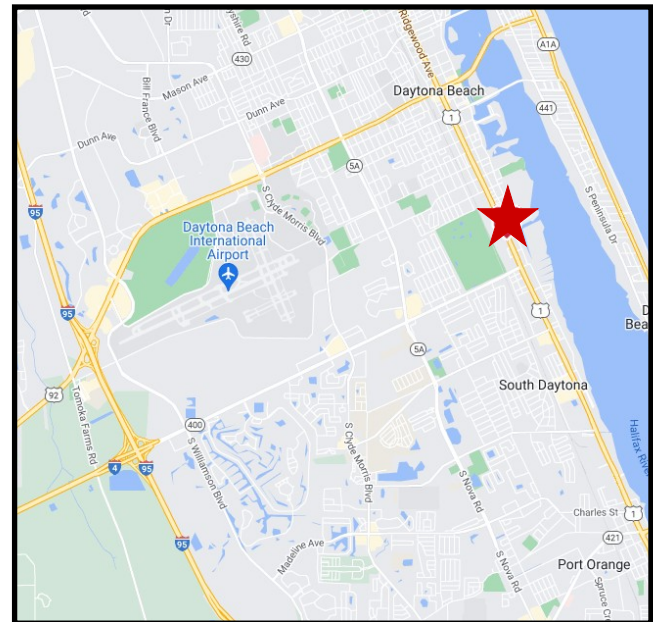
HIGH VISIBILITY



1326 S RIDGEWOOD AVE, #10, DAYTONA BEACH FL 32114

LOCATION OVERVIEW:

- Professional office condominium in prime location.
- High traffic exposure and visibility along South Ridgewood Avenue, ¼ mile north of Beville Road.
- Just a six minute drive to Interstates 95 & 4.
- Play nine holes of golf at nearby Daytona Beach Golf Club.
- All existing businesses within Wilderwood are of a quiet and professional nature.



SUITE FEATURES

SUITE SIZE	1,065 SQ FEET
RESTROOMS	2 PRIVATE
PARKING	1 Reserved + 66 Common
SIGNAGE	Monument Signage

For more information, please contact:

BILL MILLER

RE/MAX Central Realty
(407) 415-2263
bmiller@mycflre.com

RE/MAX
COMMERCIAL

300 Primera Blvd Suite 100
Lake Mary, FL 32746

OFFICE SUITE FOR LEASE

INTERIOR PHOTOS:



For more information, please contact:

BILL MILLER

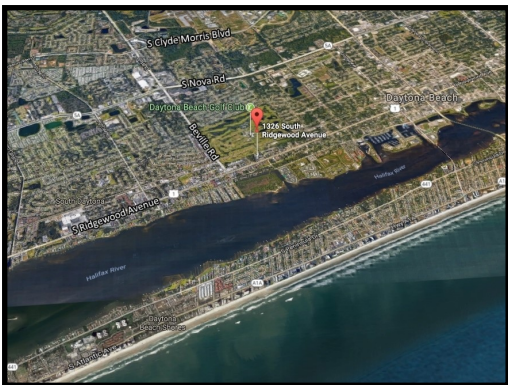
RE/MAX Central Realty
(407) 415-2263
bmiller@mycflre.com

RE/MAX
COMMERCIAL®

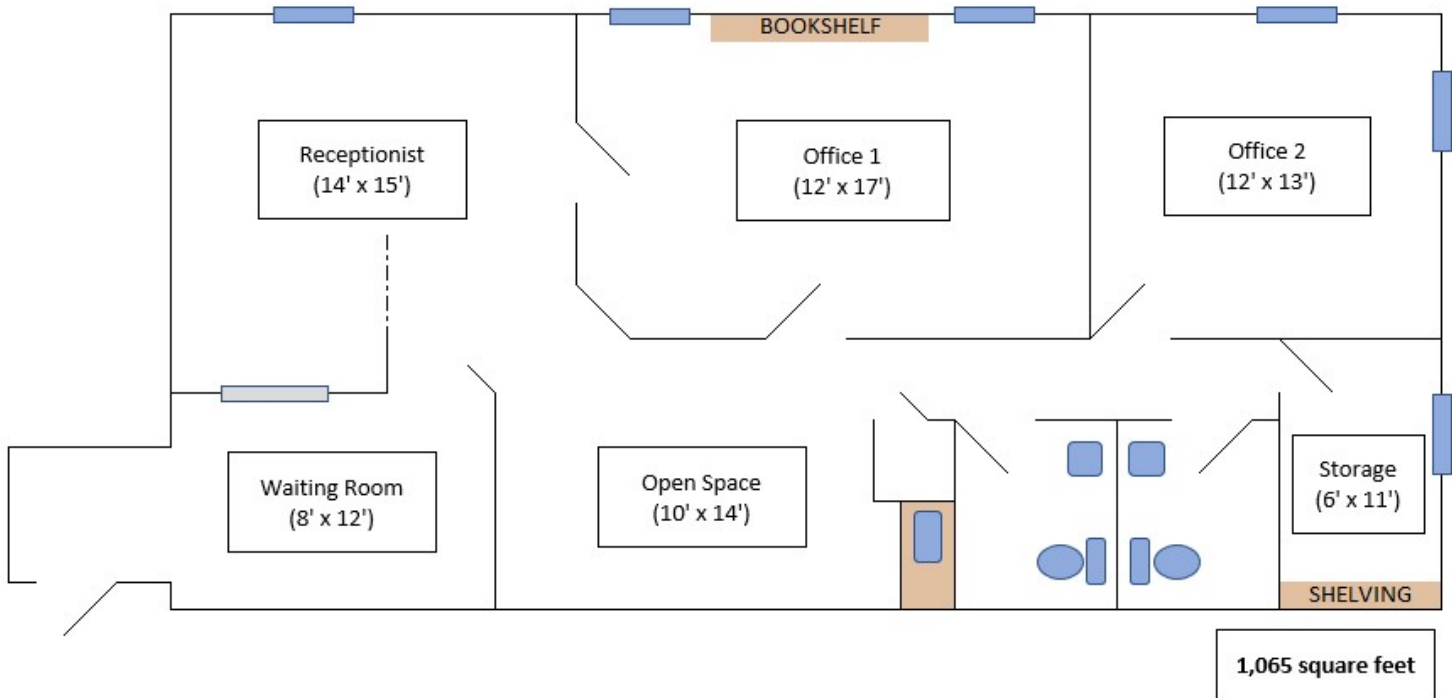
300 Primera Blvd Suite 100
Lake Mary, FL 32746

PROFESSIONAL CONDO SUITE FOR LEASE

AERIAL PHOTOS:



FLOOR PLAN:



For more information, please contact:

BILL MILLER

RE/MAX Central Realty
(407) 415-2263
bmiller@mycflre.com



300 Primera Blvd Suite 100
Lake Mary, FL 32746