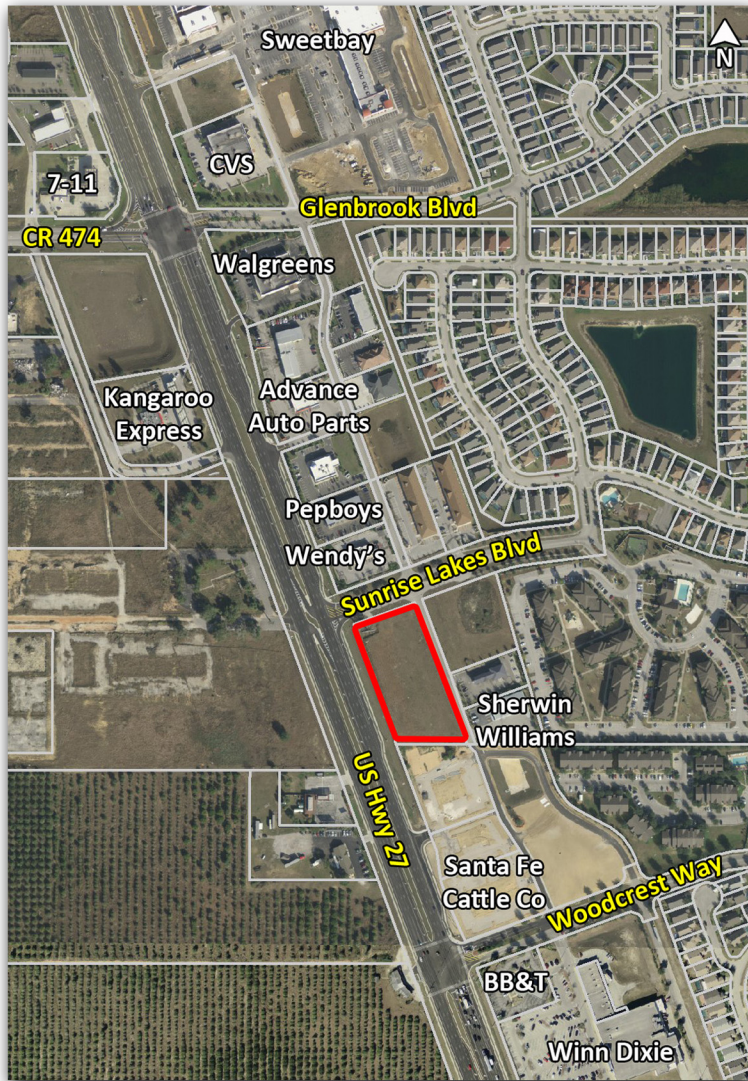


2.5± Acre Commercial Outparcel

SEC US Hwy 27 & Sunrise Lakes Blvd, Clermont, FL

Bank Owned



PRICE REDUCED!
~~\$809,000~~ \$640,000

Property Details

- 2.5± net acres
- Frontage on 3 roads with 420 ft along US Hwy 27
- Zoned PUD (Lake County)
- Excellent visibility / access
- 37,500 AADT
- Utilities available
- 2013 RE Taxes: \$8,034
- Parcel ID: 26-24-26-180000G00000

Property Overview

Southeast corner of US Hwy 27 & Sunrise Lakes Blvd in Clermont, Lake County, 1.5 miles north of US Hwy 192 and 5 miles from Disney World.

Conceptually planned for a 25,000± SF retail strip development.

Contact Information

Paul Hoffman
paul.hoffman@cbcworldwide.com
Phone: (407) 571-5556



NRT

All information contained herein has been obtained from sources deemed reliable. However, no warranty or guarantee is made as to the accuracy of the information. CBC is agent for Seller.

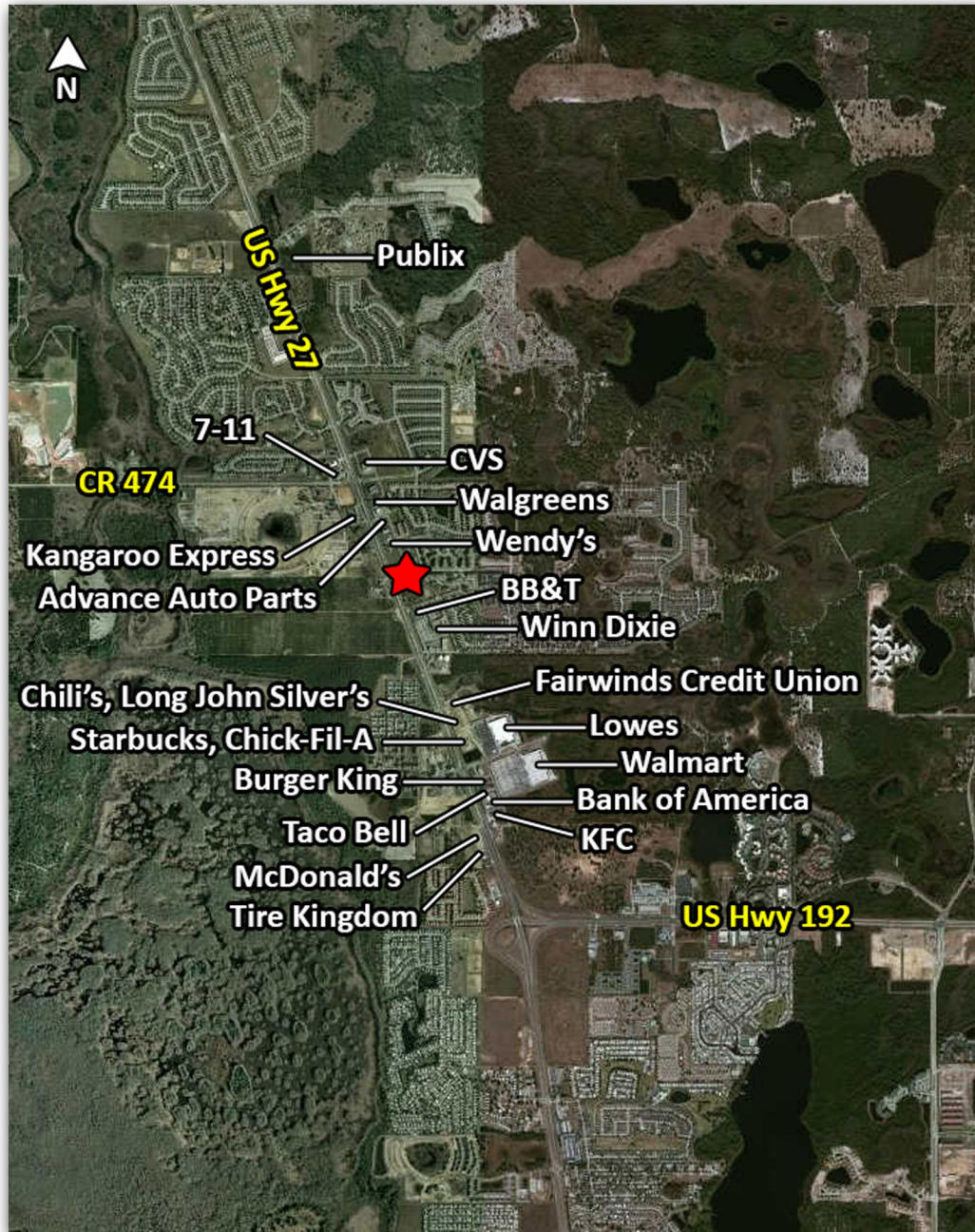
www.cbcworldwide.com

901 N Lake Destiny Drive, Suite 110
Maitland, Florida 32751
(407) 539-1000

2.5± Acre Commercial Outparcel

SEC US Hwy 27 & Sunrise Lakes Blvd, Clermont, FL

Bank Owned



Contact Information

Paul Hoffman
paul.hoffman@cbcworldwide.com
Phone: (407) 571-5556



NRT

All information contained herein has been obtained from sources deemed reliable. However, no warranty or guarantee is made as to the accuracy of the information. CBC is agent for Seller.

www.cbcworldwide.com

901 N Lake Destiny Drive, Suite 110
Maitland, Florida 32751
(407) 539-1000