



**RETAIL
SPACE
FOR LEASE**



1,500 to 11,262 SF Available

Shoppes at 18th & Commercial

1701-1781 East Commercial Boulevard, Fort Lauderdale, FL 33334

Michael Rotella | 954-802-3203 | mike@rotellagroup.com
Office | 954-568-9015 | rotellagroup.com

**The
R&G Rotella Group Inc.**
COMMERCIAL REAL ESTATE Est. 1995

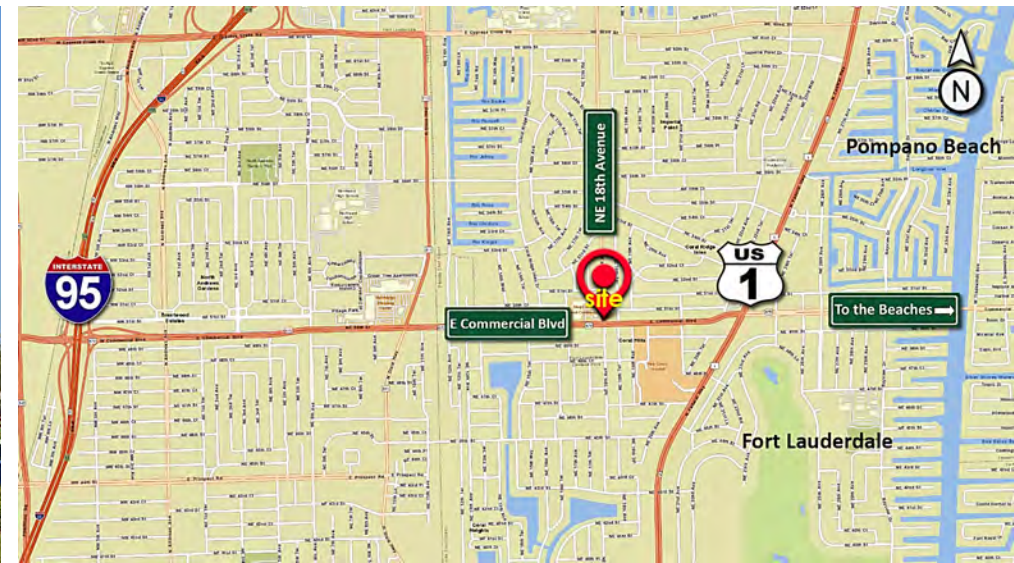


1701-1781 East Commercial Boulevard, Fort Lauderdale, FL 33334

1,500 to 11,262 SF Available at Shoppes at 18th & Commercial **For Lease**

The Rotella Group has been retained as the exclusive agent for leasing **available spaces**, located at 1701-1781 E Commercial Blvd, Ft. Lauderdale, Broward County, in the Southeast Florida Market, **on the corner of NE 18th Avenue**.

Shoppes at 18th & Commercial is a Neighborhood Shopping Center with **80,316 SF of GLA** Anchored by Aldi Food Market.



Michael Rotella | 954-802-3203 | mike@rotellagroup.com



1701-1781 East Commercial Boulevard, Fort Lauderdale, FL 33334

1,500 to 11,262 SF Available at Shoppes at 18th & Commercial For Lease

- Join Aldi, Orange Theory, Sally Beauty Supply, Auto Zone, Verizon, Wing Stop, Mission BBQ, and Wellmax Medical Center.
- Excellent Monument Sign Availability / Great Visibility at Signalized Intersections.
- Dense Housing, Hospital, and School District with Ingress and Egress from E Commercial Boulevard and NE 18th. Avenue.



Unit	SqFt	Base Rent per SF	Common Area Maintenance
1733	1,500	\$32.00	Est \$6.50
1715	11,262	\$32.00	Est \$6.50

Michael Rotella | 954-802-3203 | mike@rotellagroup.com



1701-1781 East Commercial Boulevard, Fort Lauderdale, FL 33334

1,500 to 11,262 SF Available at Shoppes at 18th & Commercial For Lease



2022 Demographics	1 Mile	3 Miles	5 Miles
Total Population	17,082	124,112	299,527
Total Daytime Population	22,742	159,027	374,108
Average Household Income	\$109,669	\$116,077	\$103,579
Median Age	47.2	49.5	45.0
Total Businesses	2,341	15,300	30,579

Source: Esri

2027 Demographics Forecast	1 Mile	3 Miles	5 Miles
Total Population	16,931	125,244	304,295
Average HH Income	\$130,161	\$138,198	\$123,759
Median Age	47.1	50.0	45.4

Source: Esri

Michael Rotella | 954-802-3203 | mike@rotellagroup.com



1701-1781 East Commercial Boulevard, Fort Lauderdale, FL 33334

1,500 to 11,262 SF Available at Shoppes at 18th & Commercial **For Lease**

Site Plan



- 8,500 - 11,262 SF Junior Anchor
- 1,500 SF in-line space
- Total GLA 80,316 SF
- New 2022 Roof



Aerial

Michael Rotella | 954-802-3203 | mike@rotellagroup.com



The Rotella Group, Inc.

Commercial Real Estate Brokers

SOUTH FLORIDA

3300 North Federal Highway, Suite 200
Fort Lauderdale, FL 33306
Phone 954-568-9015

NORTH & CENTRAL FLORIDA

12200 West Colonial Drive, Suite 300-H
Winter Garden, FL 34787
Phone 407-718-1849

www.rotellagroup.com
info@rotellagroup.com

follow us



DISCLAIMER: *The information above has been obtained from sources believed reliable. While we do not doubt its accuracy, we have not verified it and make no guarantee, warranty, or representation about it. It is your responsibility to independently confirm its accuracy and completeness. Any projections, opinions, assumptions, or estimates used are for example only and do not represent the current or future performance of the property. The value of this transaction to you may depend on tax and other factors, which should be evaluated by your tax, financial and legal advisors. You and your advisors should conduct a careful, independent investigation of the property to determine to your satisfaction the suitability of the property for your needs.*