

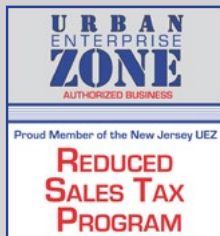
# QUICK REFERENCE GUIDE FOR BUSINESSES AND MUNICIPALITIES

# NEW JERSEY URBAN ENTERPRISE ZONE PROGRAM



## TO BECOME CERTIFIED

- Create/login to a NJ Premier Business Services (PBS) account
- Add a business to the PBS account
- Select the Urban Enterprise Zone Service Center in PBS
- Complete and submit the UEZ Certification Application



**New Jersey  
Urban Enterprise  
Zone Program**  
PO Box 822  
Trenton, NJ 08625  
(877) 913-6837  
[UEZinfo@dca.nj.gov](mailto:UEZinfo@dca.nj.gov)



**Philip D. Murphy**, Governor  
State of New Jersey

**Lt. Governor Sheila Y. Oliver**, Commissioner  
Department of Community Affairs

**Tim Sullivan**, Chair  
New Jersey Urban Enterprise Zone Authority

### UEZ Certification Forms:

[https://www16.state.nj.us/NJ\\_PREMIER\\_EBIZ/jsp/home.jsp](https://www16.state.nj.us/NJ_PREMIER_EBIZ/jsp/home.jsp)  
877-913-6837

### Business Services:

(Premier) [www.nj.gov/njbusiness/home/pbs](http://www.nj.gov/njbusiness/home/pbs) • 877-913-6837  
(General) [www.nj.gov/njbusiness](http://www.nj.gov/njbusiness) • 866-534-7789

### UEZ Business Certification and Sample Forms:

[www.nj.gov/dca/affiliates/uez/publications](http://www.nj.gov/dca/affiliates/uez/publications) • 877-913-6837

### Registering Businesses:

[www.nj.gov/treasury/revenue](http://www.nj.gov/treasury/revenue) • 609-292-9292

### NJ Tax Information and Tax Forms:

(General) [www.state.nj.us/treasury/taxation](http://www.state.nj.us/treasury/taxation)  
(UEZ Information) [www.nj.gov/treasury/taxation/su\\_uez.shtml](http://www.nj.gov/treasury/taxation/su_uez.shtml)  
609-826-4400 • 800-323-4400

### UEZ Manufacturers Energy Sales Tax Exemption Application:

[www.njeda.com/financing\\_incentives/Programs/Urban-Enterprise-Zones-\(UEZ\)-Manufacturers-Energy](http://www.njeda.com/financing_incentives/Programs/Urban-Enterprise-Zones-(UEZ)-Manufacturers-Energy)  
866-534-7789

### UEZ Unemployment Insurance Rebate:

<http://lwd.dol.state.nj.us/labor/ea/empinfo/uez.html>  
732-296-7000 Ext. 7060 or Fax 732-937-6273

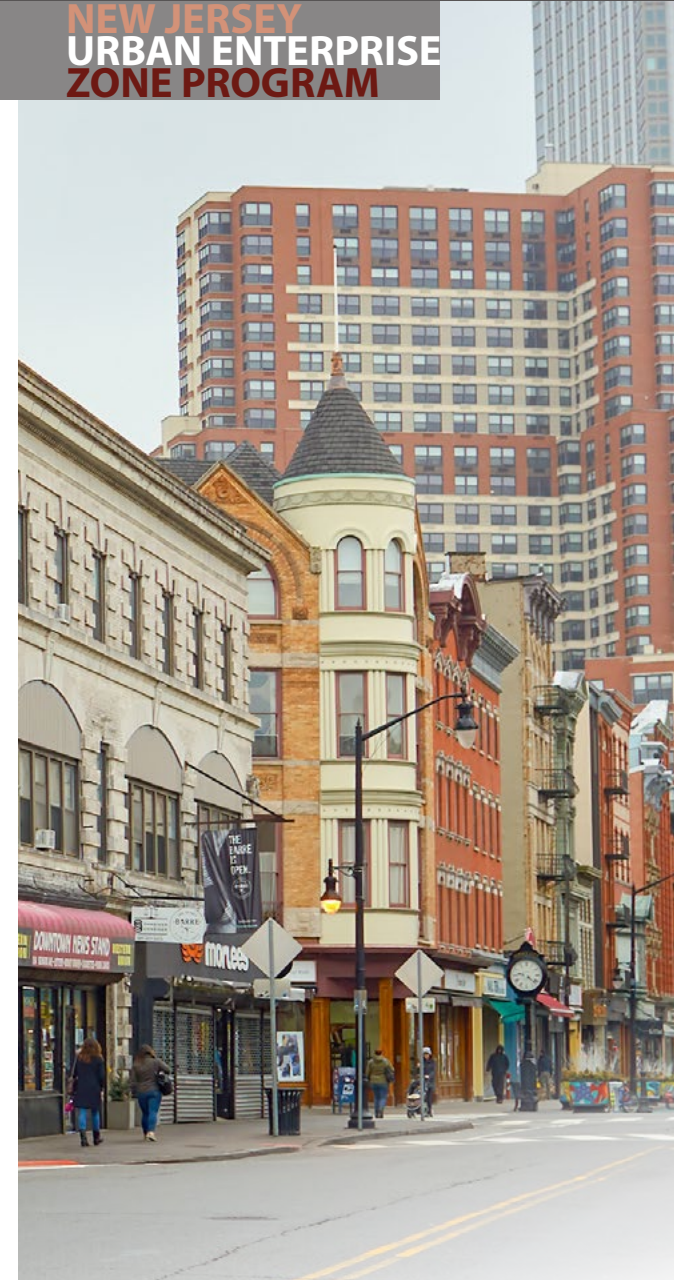
### Accessing the MyNewJersey Portal:

<http://nj.gov> • Click on **Login** or **Register**

\*UEZ Inquiries may be emailed to [HelpDesk@dca.nj.gov](mailto:HelpDesk@dca.nj.gov)

\*Additional UEZ resources can be found at:

[www.nj.gov/dca/affiliates/uez](http://www.nj.gov/dca/affiliates/uez) • (877) 913-6837



**NEW JERSEY  
DEPARTMENT OF  
COMMUNITY AFFAIRS**

[www.nj.gov/dca](http://www.nj.gov/dca)

## UEZ PROGRAM INFORMATION

New Jersey's Urban Enterprise Zone (UEZ) Program, enacted in 1983, is an Affiliate of the Department of Community Affairs. The Program's charter is to foster an economic climate that revitalizes designated urban communities and stimulates their growth by encouraging businesses to develop and create private sector jobs through public and private investment.

## QUALIFICATIONS

To participate in the UEZ Program, a business must:

- Register with the State of NJ
- Be Located within a designated UEZ
- Be in tax compliance with the State of NJ

## BUSINESS CERTIFICATION SYSTEM

Certification Applications are entered online using the UEZ Business Certification System, accessible through NJ Premier Business Services. Links to instructions, sample forms, worksheets, and helpful information are available on the UEZ Website:

<http://www.nj.gov/dca/affiliates/uez/index.shtml>

## JOB CREATION AND LOCAL HIRING REQUIREMENTS

UEZ businesses are expected to help increase employment in the zone. Within the first three years in the Program, at least 25% of newly-hired employees must meet one or more of the following criteria:

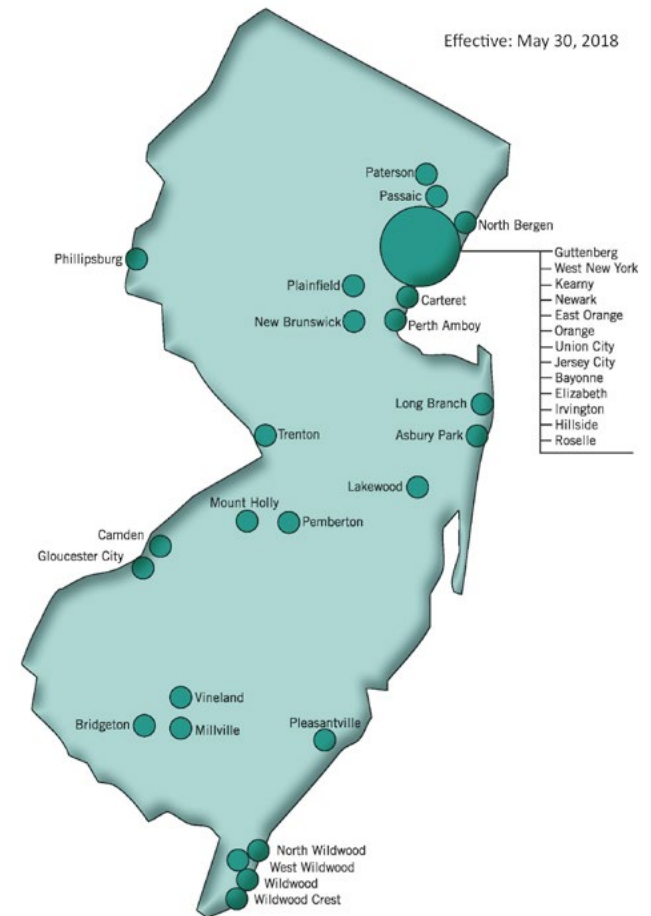
- Residents of any municipality with a UEZ
- NJ residents unemployed for at least six months prior to being hired
- Recipients of New Jersey public assistance programs for at least six months prior to being hired
- Determined to be low-income individuals pursuant to the Workforce Investment Act of 1998

## BENEFITS TO BUSINESSES

- Reduced Retail Sales Tax – currently 3.3125%
- Tax Free Purchases on certain items such as capital equipment, facility expansions, upgrades, and certain personal property
- Financial Assistance from agencies such as NJEDA
- Subsidized unemployment insurance costs for employees earning less than \$4,500 / quarter
- Energy Sales Tax Exemption for qualified manufacturing firms with at least 250 full-time employees, [http://www.njeda.com/clean\\_energy](http://www.njeda.com/clean_energy) phone: 866-534-7789
- Tax Credit Options:
  - » Up to \$1,500 for new permanent full-time employees hired, OR;
  - » Up to 8% Corporate Business Tax credit on qualified investments
- <http://www.nj.gov/dca/affiliates/uez/publications/>



## URBAN ENTERPRISE ZONES



**NEW JERSEY**  
**URBAN ENTERPRISE**  
**ZONE PROGRAM**

[www.nj.gov/dca/affiliates/uez](http://www.nj.gov/dca/affiliates/uez)