

Build to Suit

Poinciana Plaza

Adj to 2600 S Poinciana Blvd, Kissimmee, FL 34758

47,000 SF Space Available

LOCATION HIGHLIGHTS

Traffic Count (2023)	19,987 VPD
Projected Traffic Count (2025)	26,028 VPD
5 Mile Population (2023)	± 75,481
% Population Growth from 2010	44%
Annual HH Income	±\$71,924
Projected Average HH Income (2025)	±\$82,956

PRELIMINARY SITE HIGHLIGHTS

- 5.44 Acres
- 47,000 SF Gross Buildable Area
- 264 Parking Spots
- Corner Spot with signage on two major streets
- Signalized Intersection
- Retail, Restaurants, Fitness, Medical & More



Traditional Freestanding Available

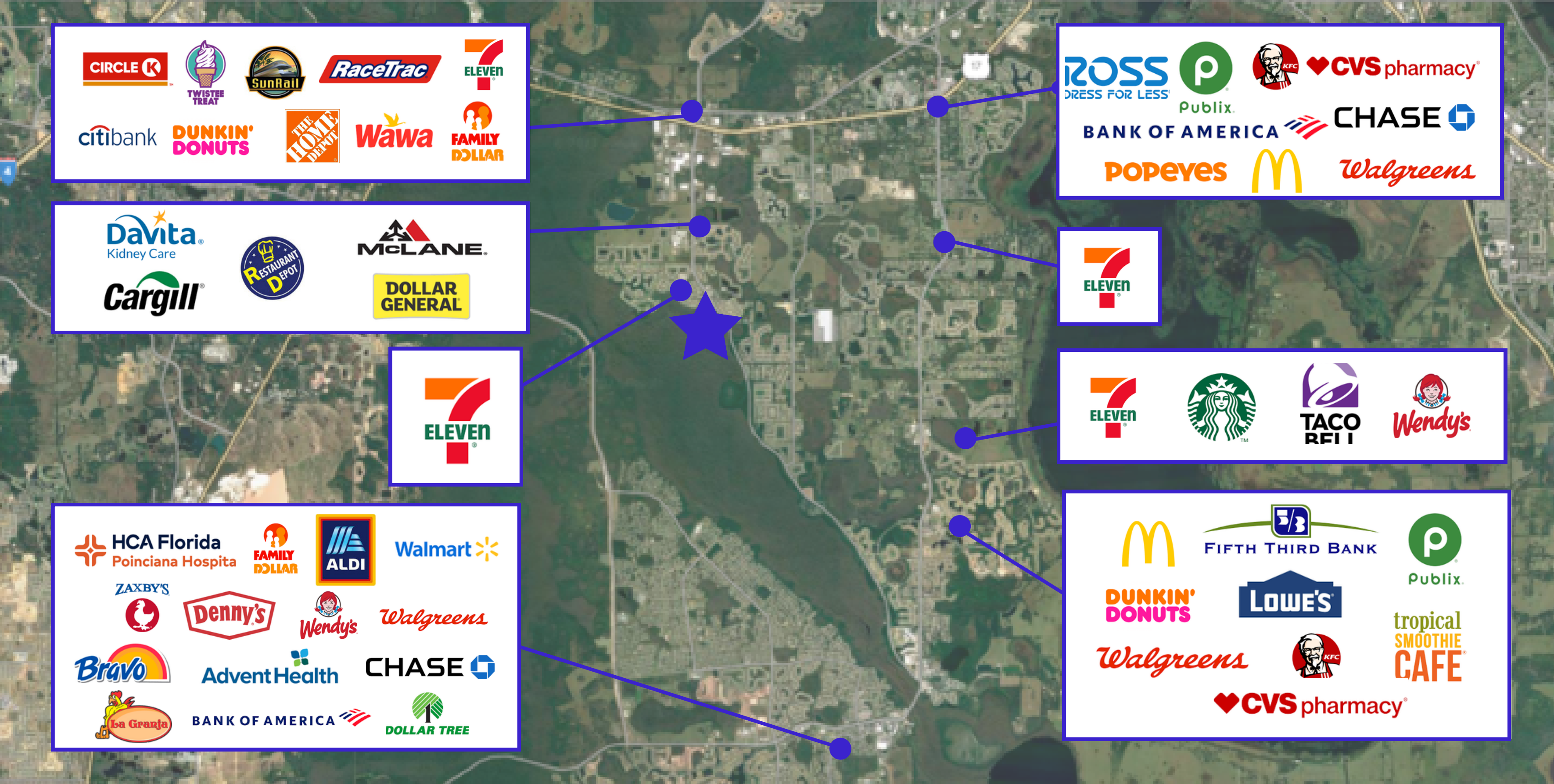
Ashley Jimenez

Cell 914-230-2513

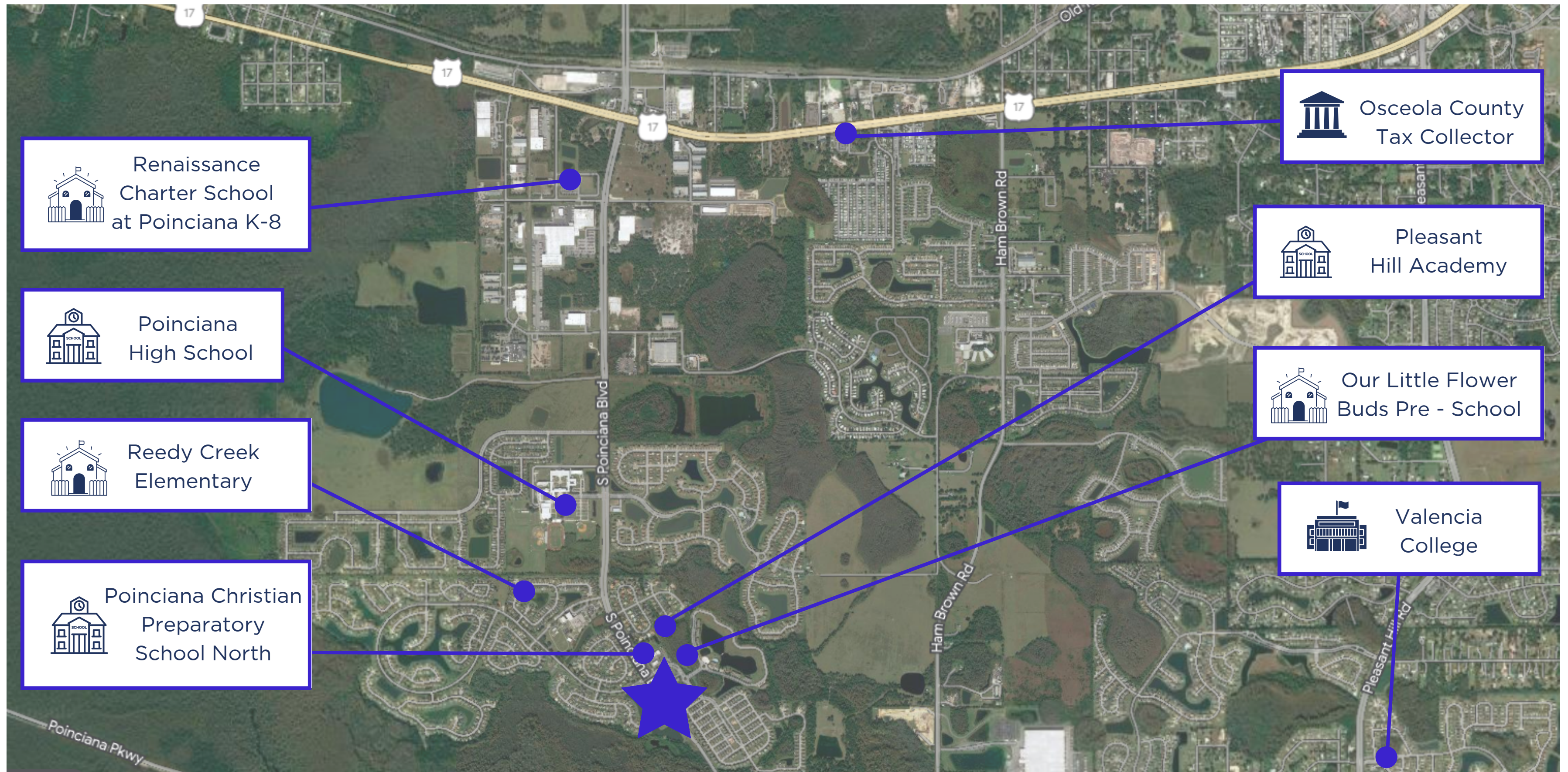
ashley@larosarealtyint.com

1420 Celebration Blvd. Celebration FL 34747

Retailer Map



Neighborhood: Institutions





Established Residential

Established Residential



± 5.44 AC

EXCLUSIVELY LISTED BY

Ashley Jimenez

Cell: (914) 230-2513

Email: Ashley@larosarealtyint.com



± 19,987
VPD