

**FOR  
SALE**

# WINTER GARDEN PRODUCING ORANGE GROVE

3496 Avalon Rd, Winter Garden, FL 34787

**UNDER  
CONTRACT**



## ABOUT THE PROPERTY

**SIZE** 9.41 ± acres

**PRICE** **Reduced!** NOW \$1,250,000  
(WAS \$1,500,000)

**ZONING** A-1

**FLU** RS 1/5

**ROAD  
FRONTAGE** 650' ± on Avalon Rd

**PARCEL ID** 27-23-06-4284-03-600

## DESCRIPTION

**Acreage in Winter Garden!** Currently a producing orange grove, this property would make an excellent homesite or investment project. All upland acreage.

**Call for a showing today!**

**MAURY L. CARTER & ASSOCIATES, INC.**

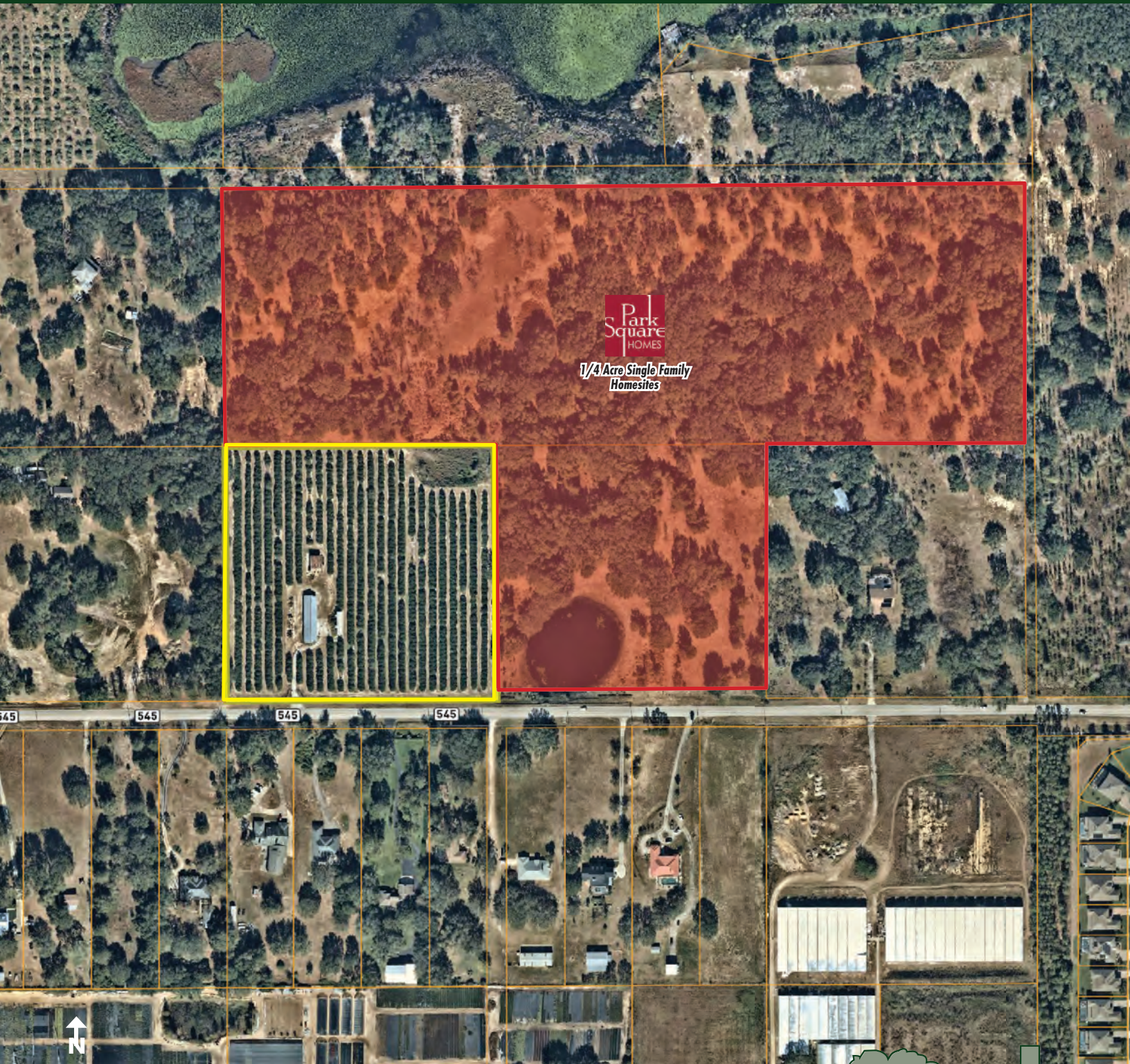
Licensed Real Estate Brokers | [www.maurycarter.com](http://www.maurycarter.com) | 407-422-3144



**FOR  
SALE**

# WINTER GARDEN PRODUCING ORANGE GROVE

3496 Avalon Rd, Winter Garden, FL 34787



Park  
Square  
HOMES  
1/4 Acre Single Family  
Homesites

↑  
**PARCEL MAP**

**MAURY L. CARTER & ASSOCIATES, INC.**

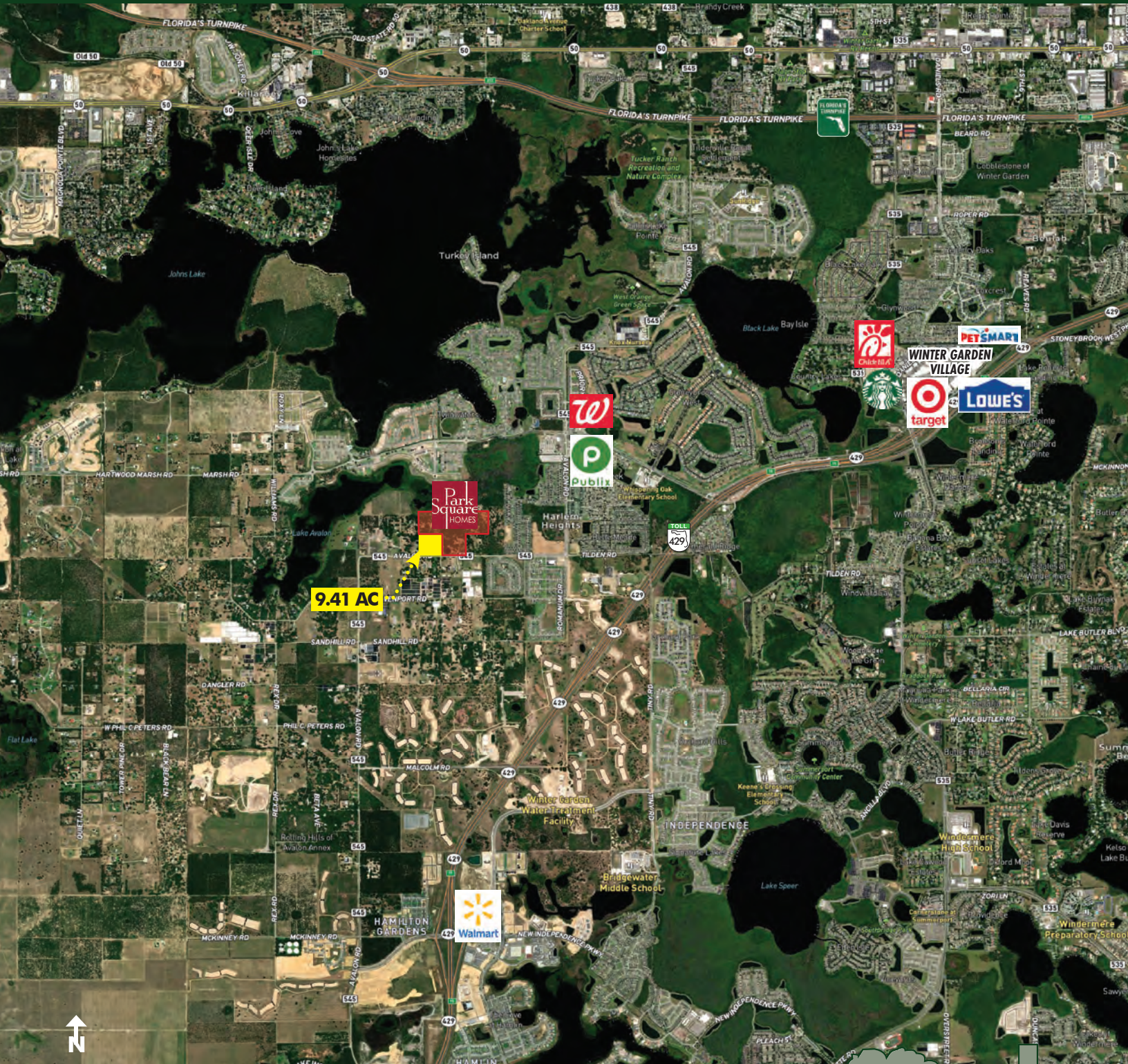
Licensed Real Estate Brokers | [www.maurycarter.com](http://www.maurycarter.com) | 407-422-3144



**FOR  
SALE**

# WINTER GARDEN PRODUCING ORANGE GROVE

3496 Avalon Rd, Winter Garden, FL 34787



**REGIONAL MAP**

**MAURY L. CARTER & ASSOCIATES, INC.**

Licensed Real Estate Brokers | [www.maurycarter.com](http://www.maurycarter.com) | 407-422-3144



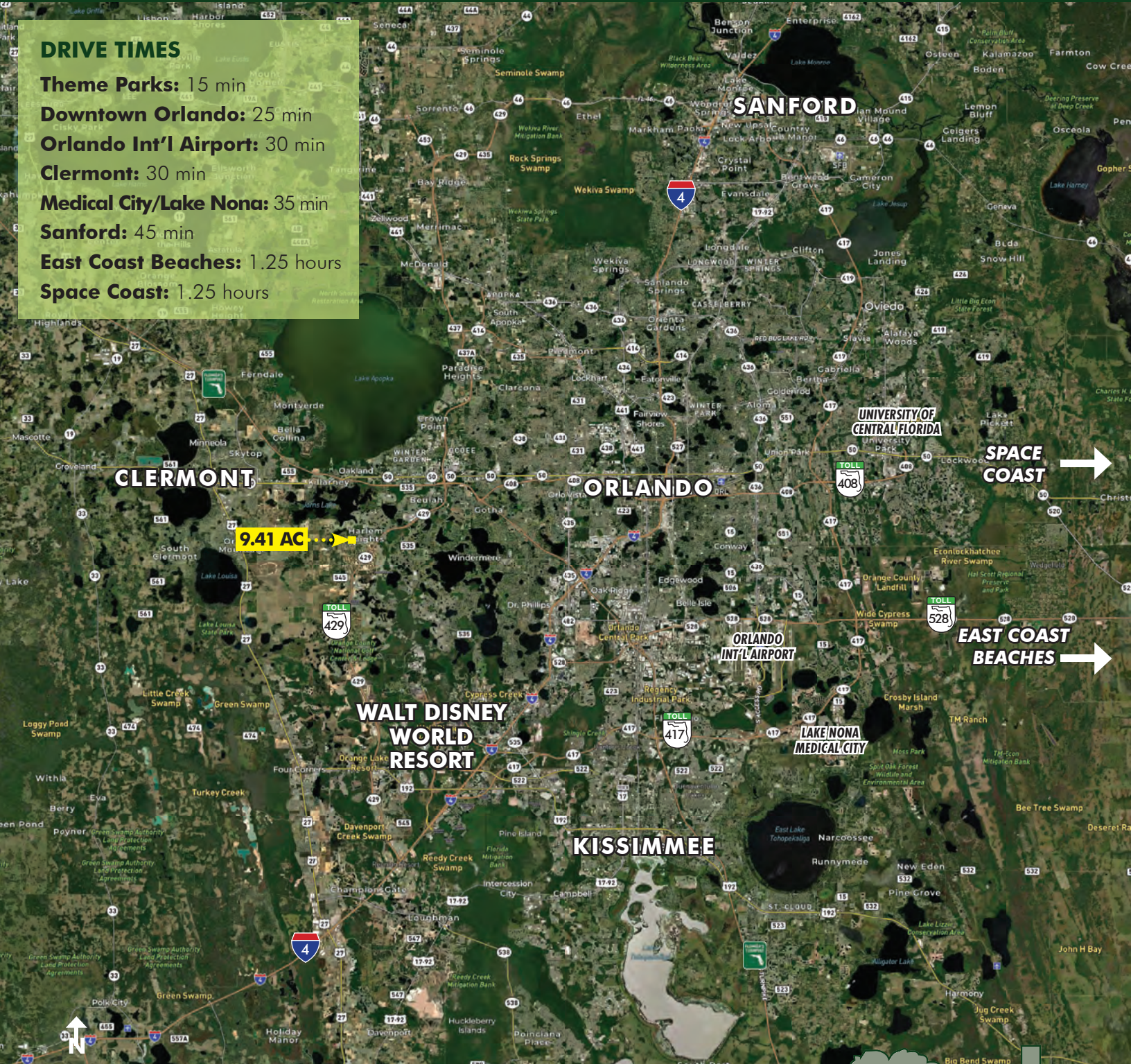
**FOR  
SALE**

# WINTER GARDEN PRODUCING ORANGE GROVE

3496 Avalon Rd, Winter Garden, FL 34787

## DRIVE TIMES

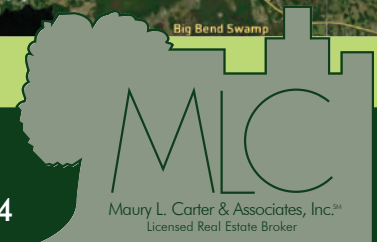
- Theme Parks: 15 min
- Downtown Orlando: 25 min
- Orlando Int'l Airport: 30 min
- Clermont: 30 min
- Medical City/Lake Nona: 35 min
- Sanford: 45 min
- East Coast Beaches: 1.25 hours
- Space Coast: 1.25 hours



## LOCATION MAP

**MAURY L. CARTER & ASSOCIATES, INC.**

Licensed Real Estate Brokers | [www.maurycarter.com](http://www.maurycarter.com) | 407-422-3144



**FOR  
SALE**

# WINTER GARDEN PRODUCING ORANGE GROVE

3496 Avalon Rd, Winter Garden, FL 34787



**MAURY L. CARTER & ASSOCIATES, INC.**

Licensed Real Estate Brokers | [www.maurycarter.com](http://www.maurycarter.com) | 407-422-3144

