

PEACE RIVER RANCH

"RIVER HAMMOCK RANCH"

147± acres • Zolfo Springs, Hardee County, FL

**PRICE
REDUCED**



PROPERTY PERFECTION - PRICE REDUCTION!

Known as River Hammock Ranch, this is a perfect property for a peaceful weekend retreat. Enjoy wide open spaces for hunting, hiking, fishing, hobby farming/ranching, canoeing and much more. The name of "Peace River" says it all!

Deer, turkey, hogs, dove, song birds, and an array of other wildlife species inhabit this landscape. Take a short walk through a native "Old Florida" natural habitat on your way to the banks of the Peace River. Very few properties have both pristine natural landscapes as well as premier water frontage. This one does. While relaxing on your back porch, watch deer and turkey slowly feed under 100 year old oaks.

This house has plenty of room for all; entertain family and friends, enjoy celebrating holidays, weekends, birthdays and other special occasions at River Hammock Ranch.



— Commercial Real Estate Investments | Management | Brokerage | Development | Land —

Maury L. Carter & Associates, Inc.
407-422-3144 | www.maurycarter.com



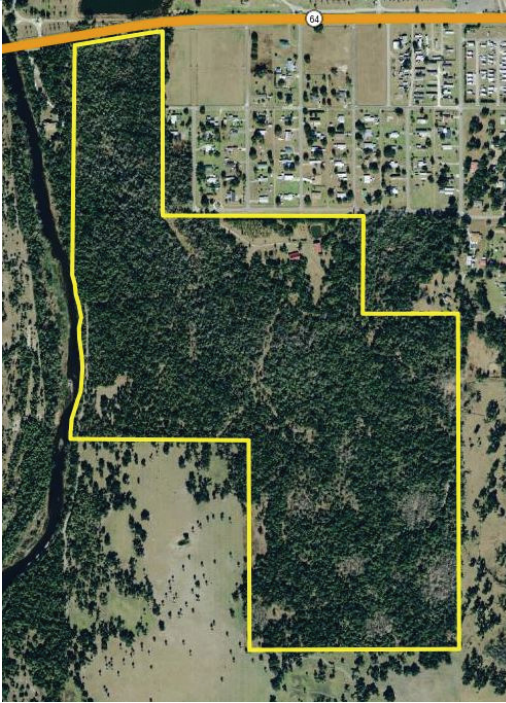
PEACE RIVER RANCH

"RIVER HAMMOCK RANCH"

147± acres • Zolfo Springs, Hardee County, FL

**PRICE
REDUCED**

LAND FOR SALE



LOCATION

925 3rd Street W, Zolfo Springs, FL 33890

SIZE

147± acres

PRICE

NOW: \$849,000 (was \$1,205,400, then \$950,000)

Owner estimates value of structures at \$350,000.

Land Value is \$499,000 or \$3,394/acre.

ZONING/FUTURE LAND USE

Zoned A-1/Agriculture

FRONTAGE

ROAD: 573± feet on south side of SR 64; 1,325± feet on the south side of Third Street; 2,250 feet on the west side of Spruce Street. WATER: Approximately 1,325± feet on the east bank of The Peace River. There is also a small fishing pond located only feet from the house.

DESCRIPTION

Located in Hardee County - 2 hours to Orlando, 1.5 hours to Tampa, 1.25 hours to Sarasota, 50 min to Lakeland. This property has a 3,000± SF, six bedroom/five bathroom house with central air and 750± SF screened porch. This house can sleep 16+ people. In addition, there is also a 3,000± SF pole barn located adjacent to the house. This poll barn houses tractors, equipment, tools, and much more.

PARCEL ID

27-34-25-0000-02500-0000

Offering subject to errors, omission, prior sale or withdrawal without notice.



— Commercial Real Estate Investments | Management | Brokerage | Development | Land

Maury L. Carter & Associates, Inc.

407-422-3144 | www.maurycarter.com

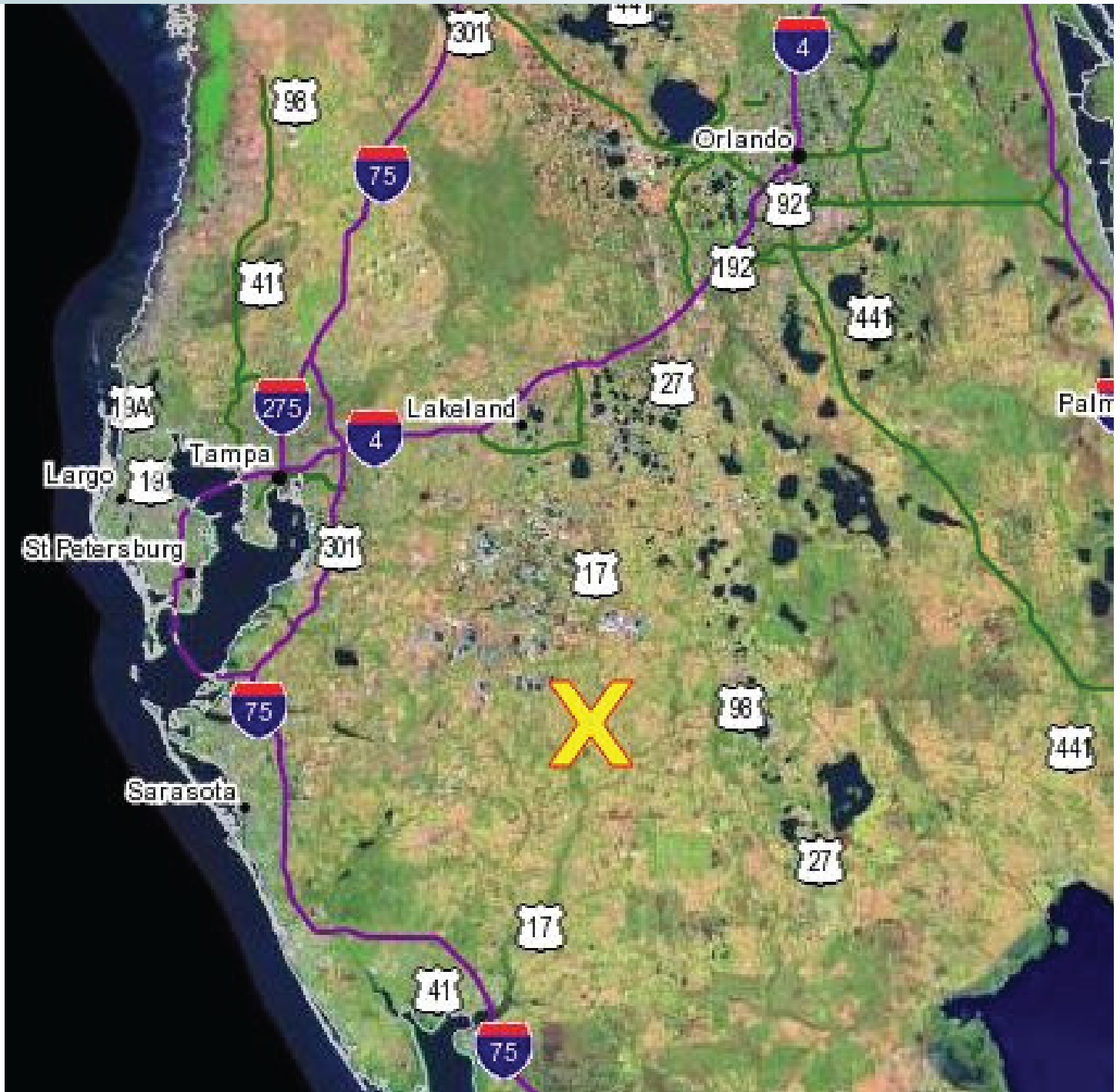


PEACE RIVER RANCH

"RIVER HAMMOCK RANCH"

147± acres • Zolfo Springs, Hardee County, FL

**PRICE
REDUCED**



— Commercial Real Estate Investments | Management | Brokerage | Development | Land

Maury L. Carter & Associates, Inc.
407-422-3144 | www.maurycarter.com

