



**FOR SALE**

603 Central Florida Pkwy, Orlando, FL 32824



**PROPERTY DETAILS:**

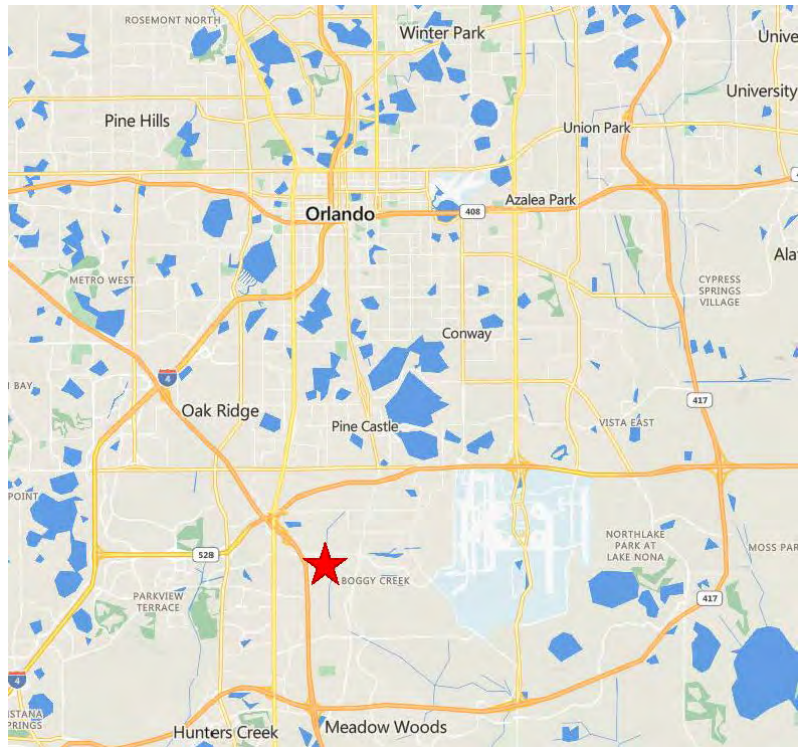
- 60,000 SF Warehouse
- +/- 4.85 acre site
- Flexible layout with Multiple Units
- +/- 1.5 Acres Secured Outside Storage
- I-4 Zoning - Heavy Industrial
- Unincorporated Orange County
- Multiple Dock High Overhead Doors
- Built in 1980
- 3-Phase Power in all Units
- Fire Sprinklers throughout
- Warehouse ceiling height 16'- 24'
- Easy access to Major Highways
- Desirable South Orlando location

**INVESTMENT DETAILS:**

- Fully leased with varying expiration dates
- Below market rents with upside potential
- Current annual NOI - \$256,647
- Contact agent for additional information

**OFFERED FOR SALE AT \$6,000,000**

**LOCATION MAP:**



For more information contact:

**Craig Duke** or **Allison Reynolds**  
 407.256.4856      407.353.6194  
 email: craig@selectcreservices.com

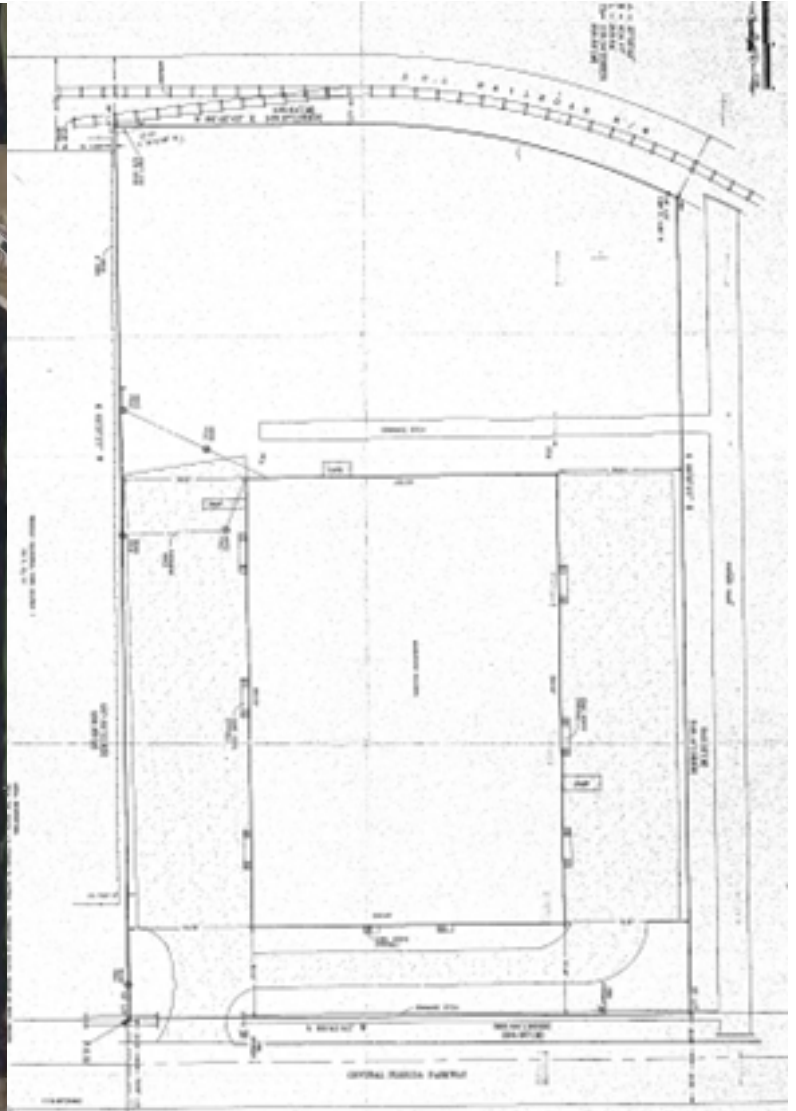
**SELECT COMMERCIAL**  
REAL ESTATE SERVICES

1540 International Parkway, Suite 2000 • Lake Mary, FL 32746



**FOR SALE**

603 Central Florida Pkwy, Orlando, FL 32824



For more information contact:  
**Craig Duke** or **Allison Reynolds**  
407.256.4856      407.353.6194  
email: [craig@selectcreservices.com](mailto:craig@selectcreservices.com)

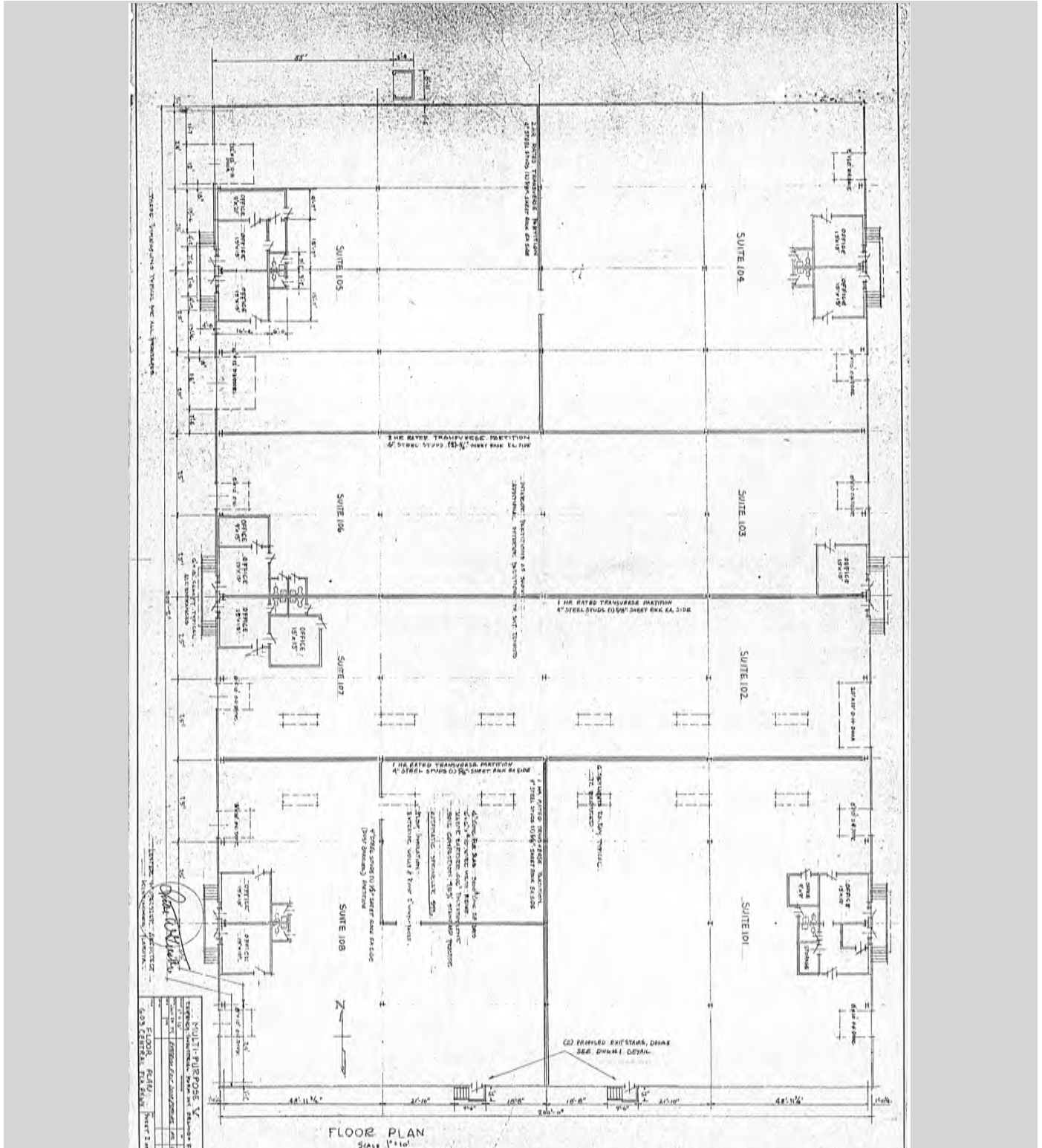
**SELECT** COMMERCIAL  
REAL ESTATE SERVICES

1540 International Parkway, Suite 2000 • Lake Mary, FL 32746



**FOR SALE**

603 Central Florida Pkwy, Orlando, FL 32824



For more information contact:  
**Craig Duke** or **Allison Reynolds**  
**407.256.4856**      **407.353.6194**  
 email: [craig@selectcreservices.com](mailto:craig@selectcreservices.com)

**SELECT** COMMERCIAL  
 REAL ESTATE SERVICES

1540 International Parkway, Suite 2000 • Lake Mary, FL 32746