



Winter Springs Marketplace

For Sale

Townhome Development Site

5.47 Acres | \$47,900 / Lot



1258 Milky Way

300 Tuskawilla

290 Tuskawilla

Tuskawilla Road



Seminole Crossing Townhomes



290 & 300 Tuskawilla Road

Winter Springs, Florida 32708

Property Highlights

- Ideal townhouse site - no wetlands; all buildable
- 5.47± acres total (includes area for master development)
- Priced for 34 lots @ \$47,900 plus portion for master retention
- 460 feet of frontage on Tuskawilla Road (34,000 AADT)
- City of Winter Springs and adjacent HOA support rezoning and annexation for utilities
- Zoning: A-1; FLU: MDR - Seminole County
- Close to Winter Springs Marketplace and Winter Springs Town Center shopping centers
- Walking distance to both Keeth Elementary and Indian Trails Middle Schools
- Great location close to major roads: ¼ mile to SR 434; 3 miles to SR 434 & SR 417 (GreeneWay) interchange & 5 miles to SR 434 & US Hwy 17-92 interchange



Sale Price: \$1,630,000

For more information

Paul P. Partyka, CCIM, MiCP, CIPS

O: 407 341 0805
ppartyka@realvest.com



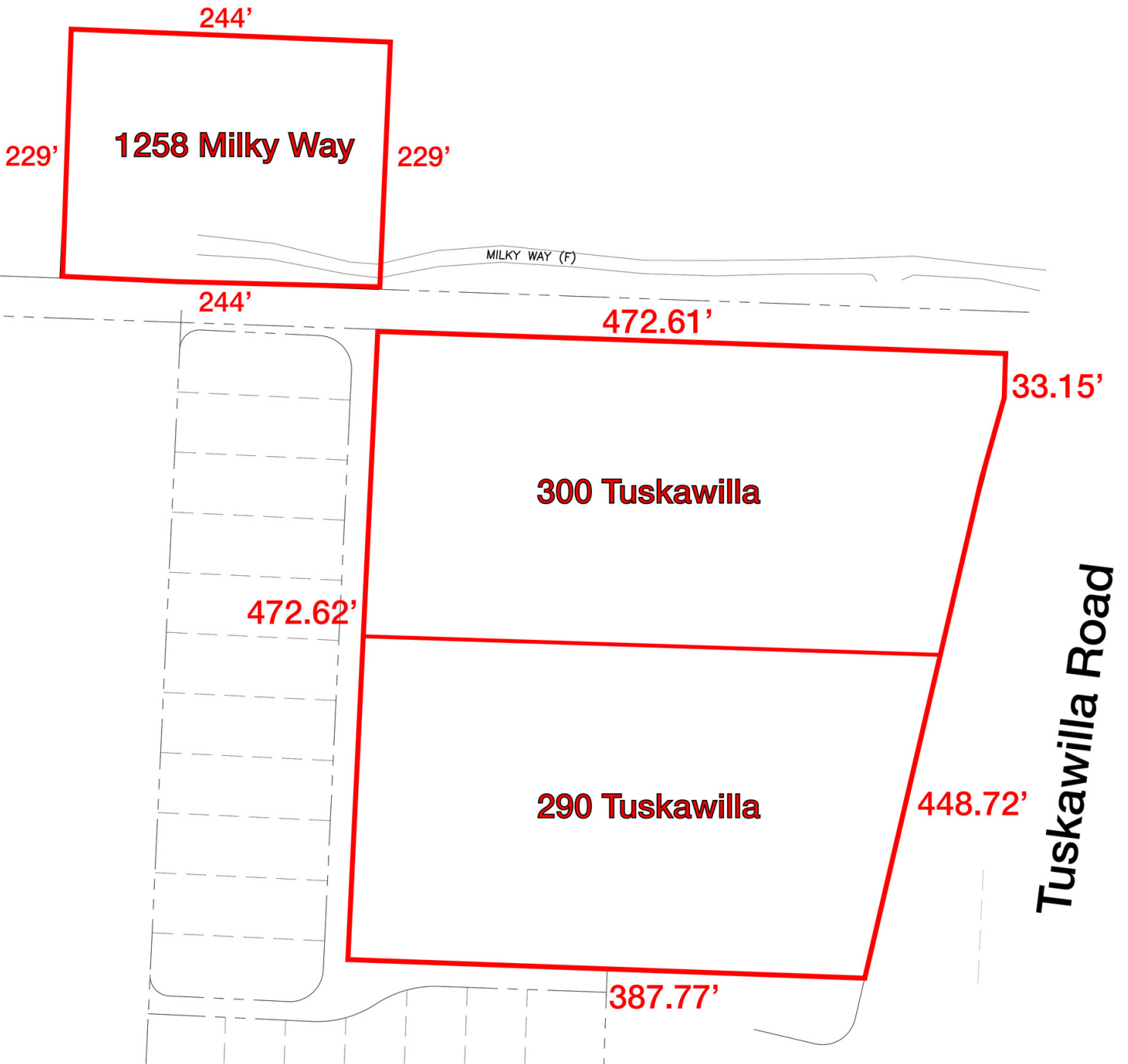
02.28.23

The information contained herein has been given to us by the owner of the property or other sources we deem reliable. We have no reason to doubt its accuracy, but we do not guarantee it. All information should be verified prior to purchase or lease. Unless otherwise noted, the property is being offered as-is, where is, with all faults.

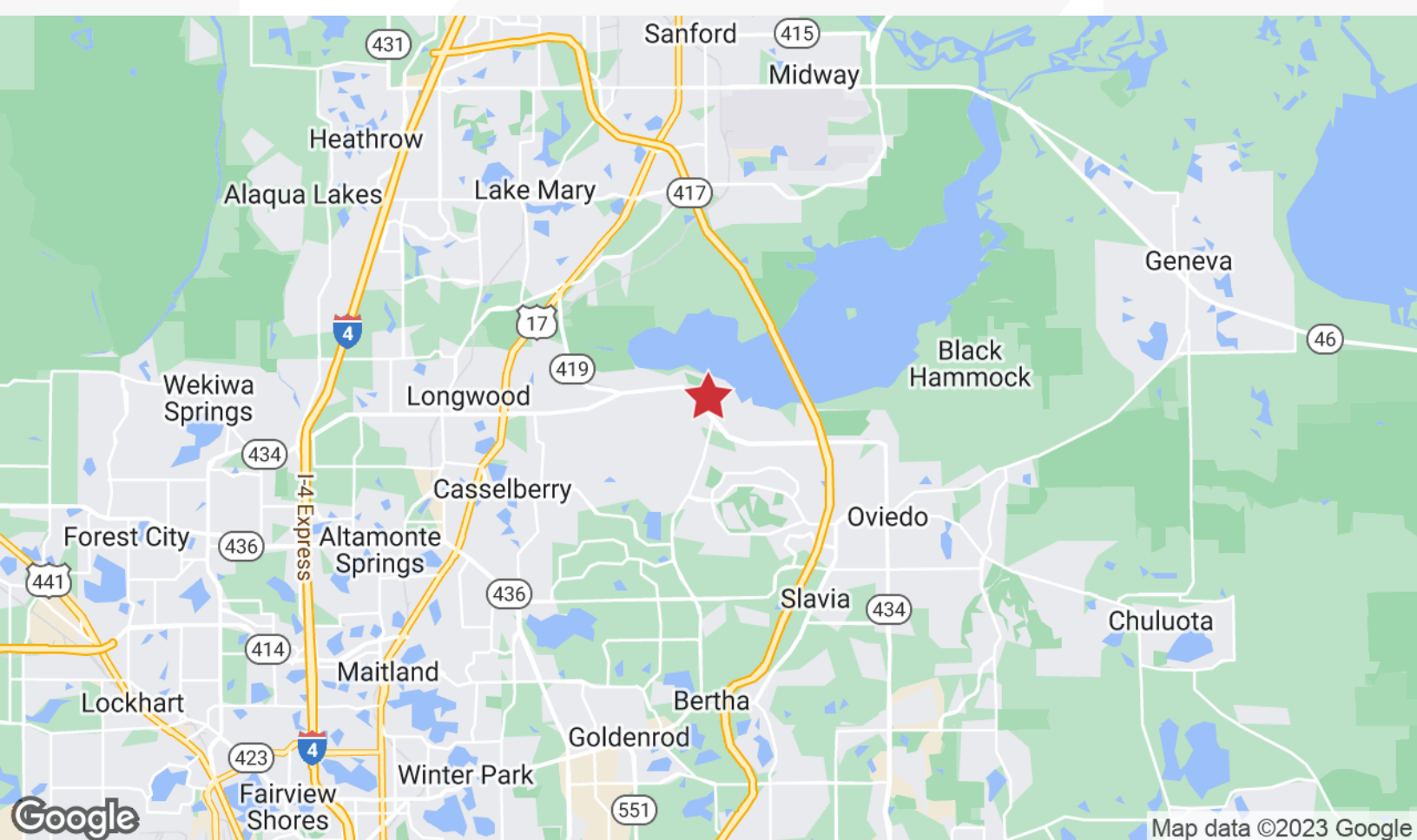
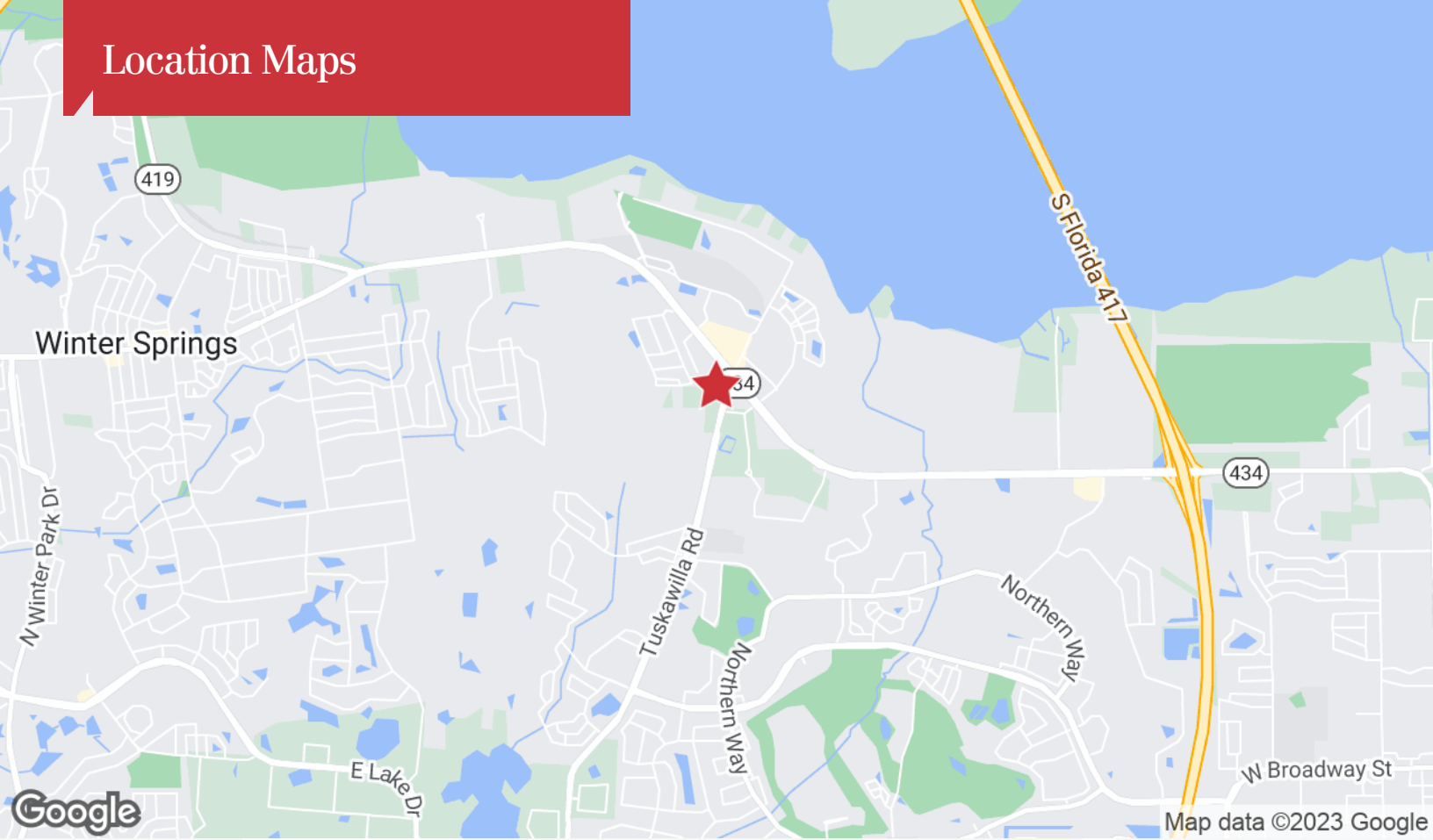
1800 Pembroke Drive, Suite 350
Orlando, FL 32810

407 875 9989 tel

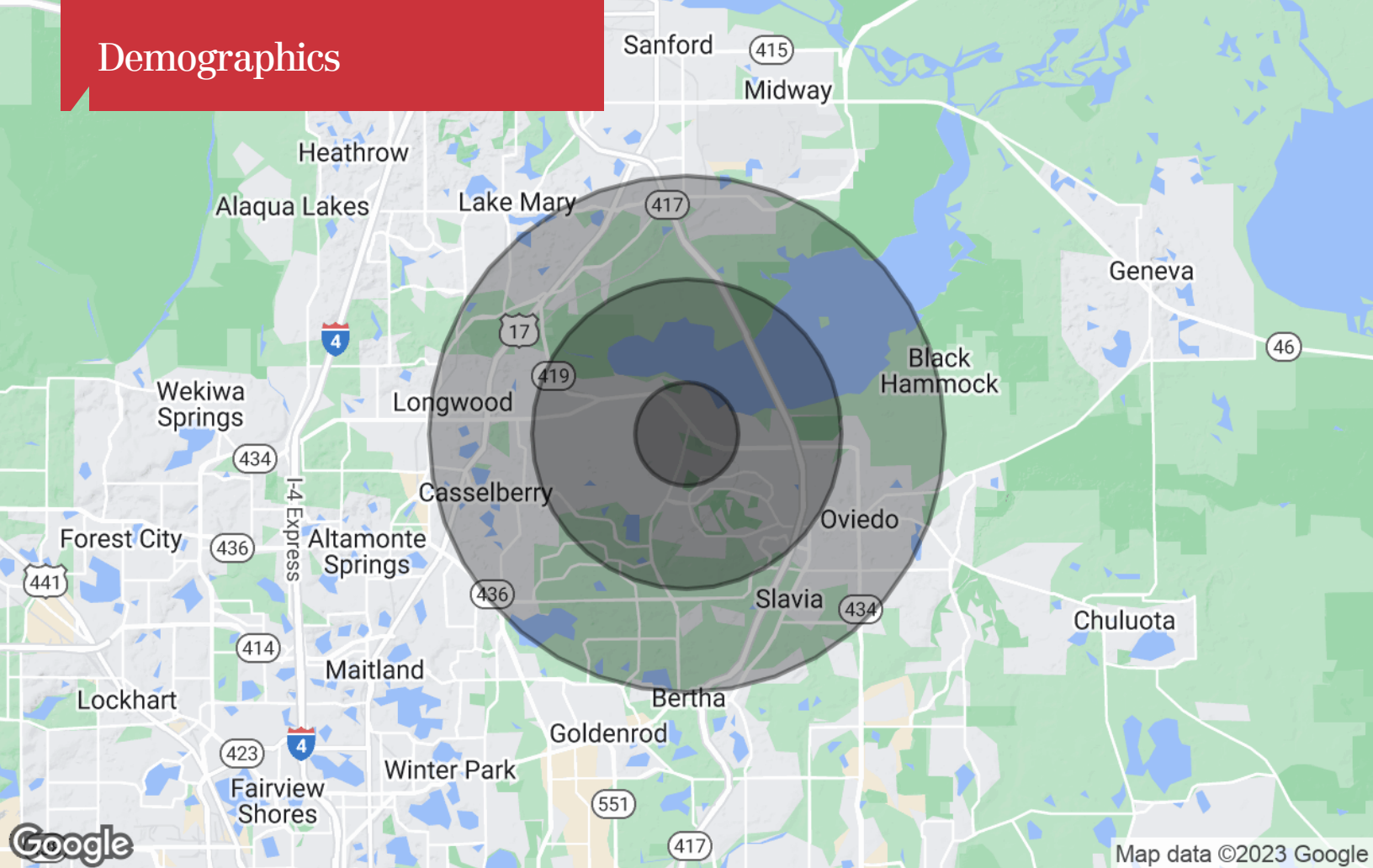
nairealvest.com



Location Maps



Demographics



Population

	1 Mile	3 Miles	5 Miles
TOTAL POPULATION	5,839	46,035	134,833
MEDIAN AGE	38.4	42.7	41.3
MEDIAN AGE (MALE)	35.6	40.6	40.1
MEDIAN AGE (FEMALE)	40.1	43.8	42.4

Households & Income

	1 Mile	3 Miles	5 Miles
TOTAL HOUSEHOLDS	2,328	18,830	55,631
# OF PERSONS PER HH	2.5	2.4	2.4
AVERAGE HH INCOME	\$102,469	\$95,291	\$82,815
AVERAGE HOUSE VALUE	\$302,896	\$277,245	\$250,929

* Demographic data derived from 2020 ACS - US Census