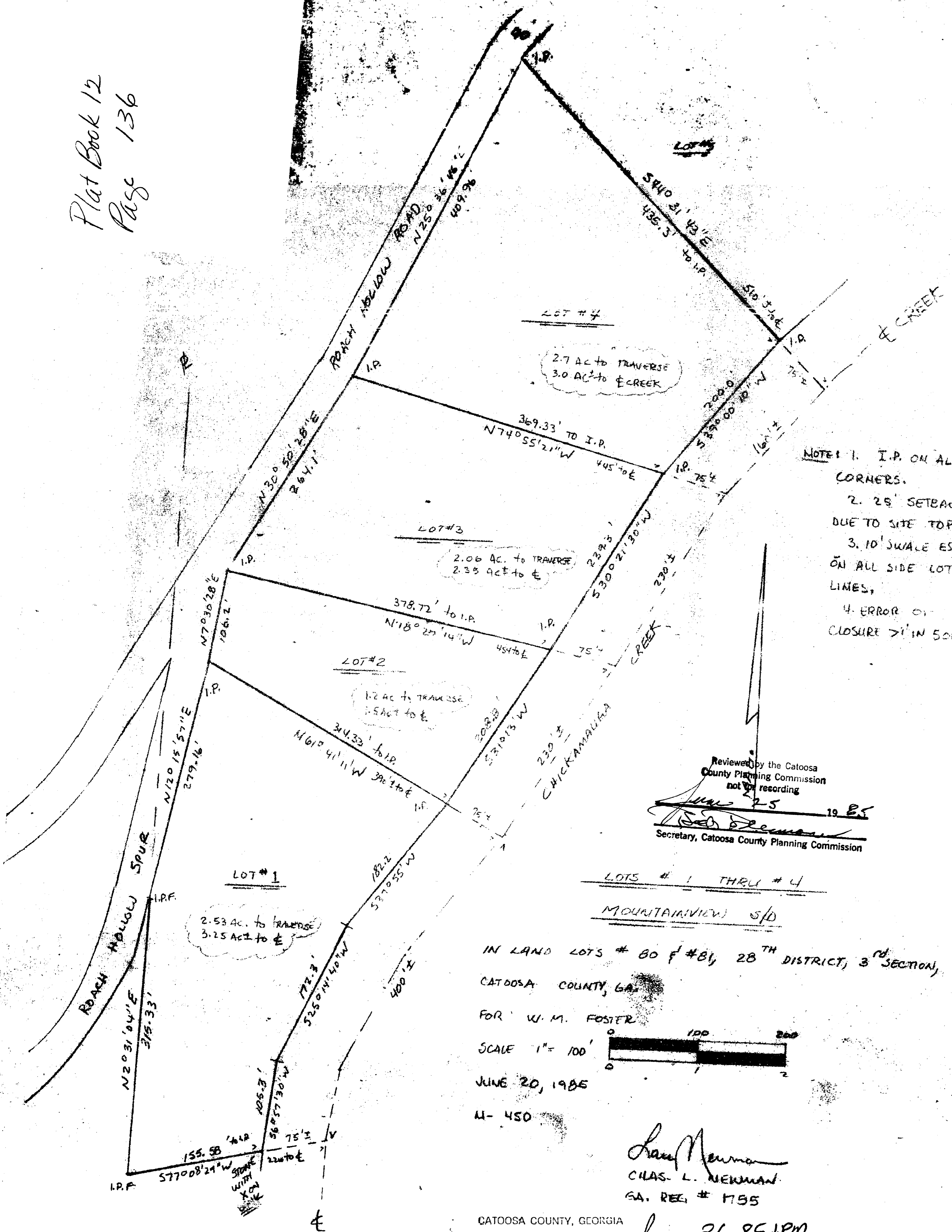


Plat Book 12
Page 136

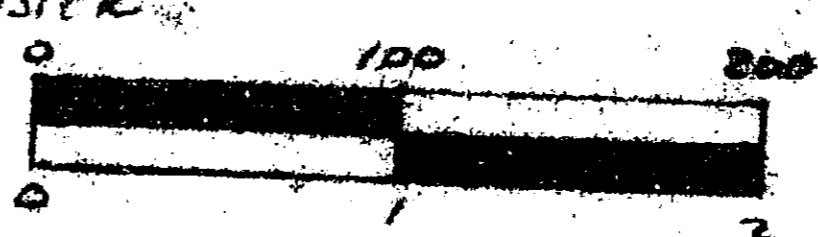


- NOTE: 1. I.P. ON ALL CORNERS.
2. 25' SETBACK DUE TO SITE TOPO.
3. 10' SWALE ESMT. ON ALL SIDE LOT LINES.
4. ERROR OF CLOSURE > 1" IN 5000'

Reviewed by the Catoosa County Planning Commission not for recording
June 25 1985
Secretary, Catoosa County Planning Commission

LOTS # 1 THRU # 4
MOUNTAINVIEW S/D

IN LAND LOTS # 80 & # 81, 28TH DISTRICT, 3RD SECTION, CATOOSA COUNTY, GA.
FOR W. M. FOSTER
SCALE 1" = 100'
JUNE 20, 1985
M-450



Chas. L. Newman
CHAS. L. NEWMAN
GA. REG. # 1755

CATOOSA COUNTY, GEORGIA
Filed and recorded in this office June 26, 1985 11PM
Recorded in Deed Book 12 Page 136
Plat
NORMAN L. STONE, Clerk