

[View Online](#)

# For Lease

**4239 & 4243** Northlake Blvd  
Palm Beach Gardens, FL



**Scott Weprin**  
Executive Vice President  
+1 561 239 9386  
scott.weprin@colliers.com

**Michael Falk** SIOR CCIM  
Executive Vice President  
+1 561 662 2624  
michael.falk@colliers.com

**Jason Weprin**  
Senior Associate  
+1 561 558 7709  
jason.weprin@colliers.com



**Colliers International  
Florida, LLC**

901 Northpoint Pkwy, #109  
West Palm Beach, FL 33407

P: +1 561 478 6400

Accelerating success.

# For Lease

4239 & 4243 Northlake Boulevard

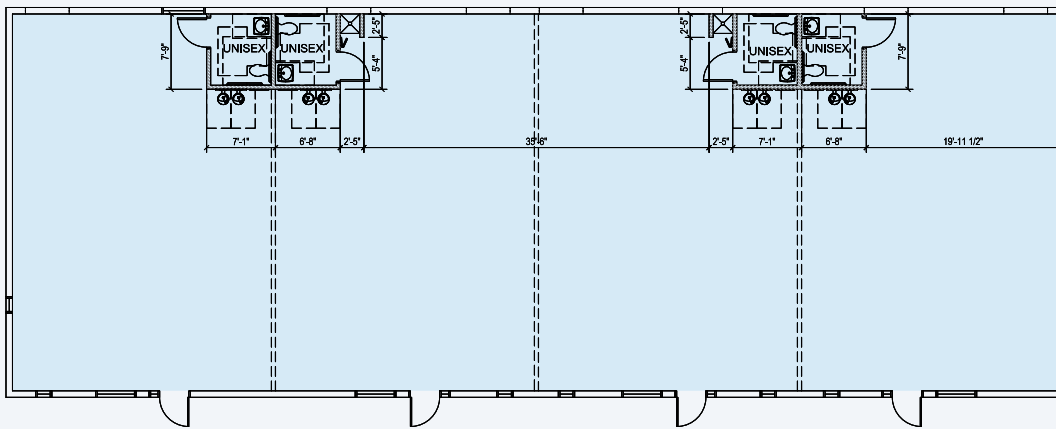
## Palm Beach Gardens Professional Building

Highly desirable Northlake Boulevard frontage in Palm Beach Gardens. Three single-story direct entry buildings located between I-95 and Military Trail. Palm Beach Gardens Professional Building presents a high visibility opportunity for office, medical and flex users.

### Plans

#### Building 4239

±4,360 SF



[View Plan Larger Here](#)



Northlake Boulevard

# For Lease

4239 & 4243 Northlake Boulevard

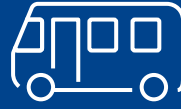
## Site Highlights



**Direct**  
Entry



**Variety**  
of Uses Available



**Easy Access**  
to Public  
Transportation



**New Signage**  
Planned



**Built in 1979**  
Renovated in 2011  
& in 2021

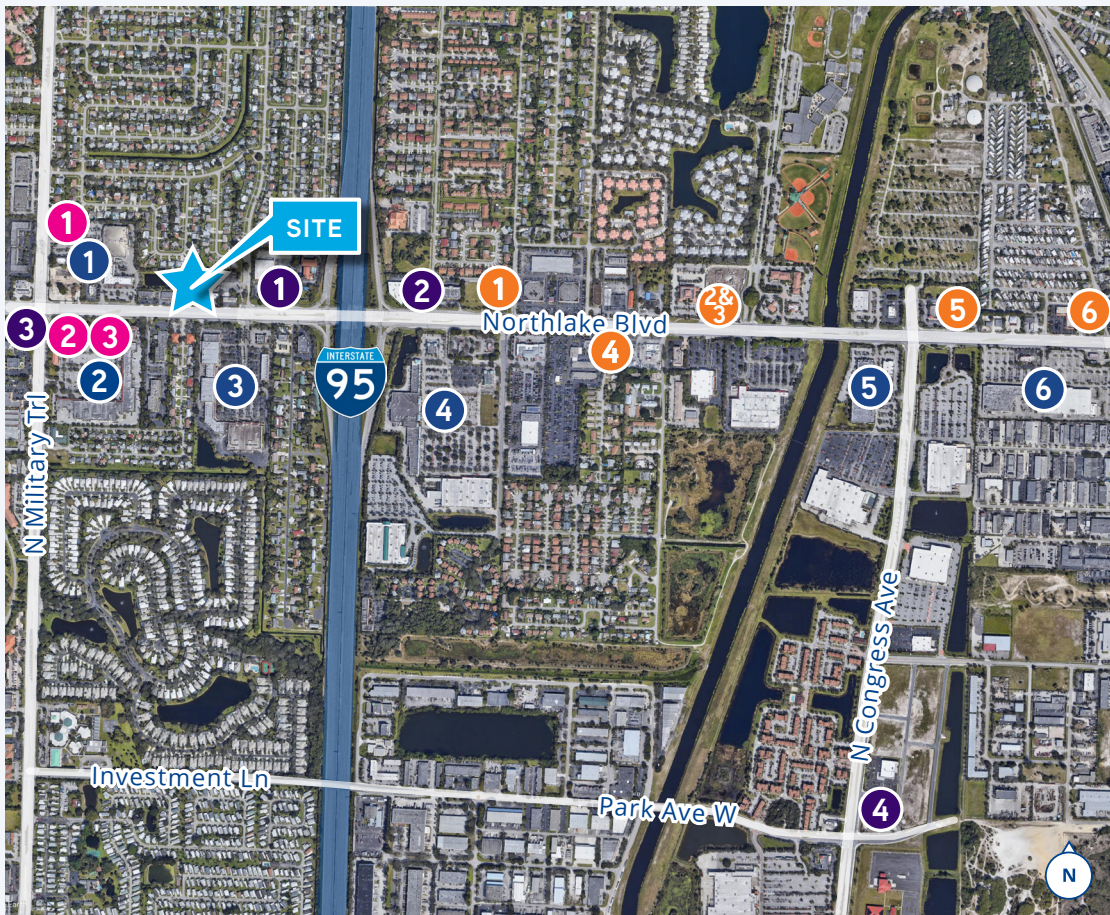


**Located**  
Right Off of I-95



**New Roofs**  
2021

## Amenities Aerial



### SHOPPING CENTERS

- 1 Northmill Plaza
- 2 Gardens Park Plaza
- 3 Gardens Towne Square
- 4 Northlake Commons
- 5 Northlake Square
- 6 Plaza at Lake Park

### RESTAURANTS

- 1 McDonald's
- 2 BOLAAT
- 3 Habit Burger Grill
- 4 Checkers
- 5 Pato Tropical
- 6 PAPA JOHN'S

### GAS

- 1 SUNOCO
- 2 Shell
- 3 Shell
- 4 RaceTrac

### BANKS

- 1 BankUnited
- 2 WELLS FARGO
- 3 CHASE

Distance to  is just 0.24 miles