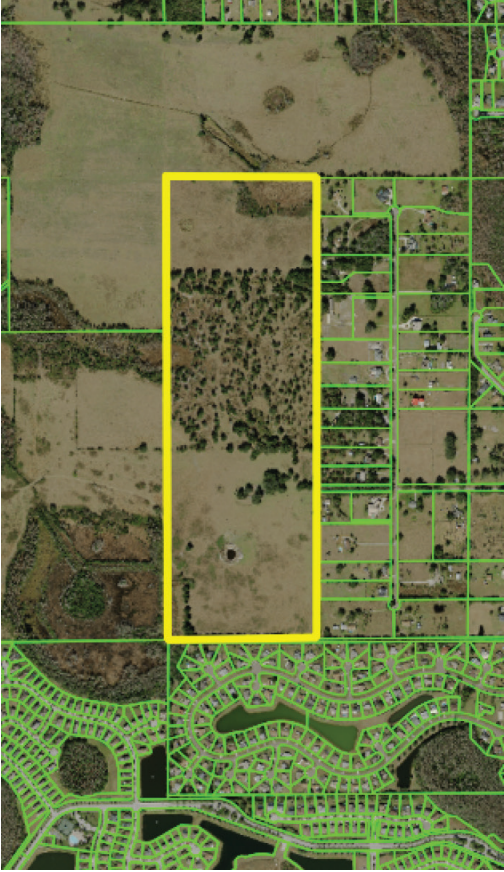


# PRIME DEVELOPMENT LAND

120± acres

Osceola County, FL



## LOCATION

Located on West Harbor Road off of Pleasant Hill Road in Osceola County, Florida. One mile south of John Young Parkway, close to City of Kissimmee lakefront. 2.5 miles to the new Valencia College - Poinciana campus.

## SIZE

120± acres

## ZONING/FLU

Low Density Residential

## ROAD FRONTAGE

Harbor Road ends at property. Property will connect to adjacent developments on west and north side.

## DESCRIPTION

Highly desirable 120± acres in Kissimmee, FL. ready for development. Surrounding properties are under development with road and utility network planned. Great opportunity in the epi-center of Central Florida growth.

Offering subject to errors, omission, prior sale or withdrawal without notice.

## DRIVE TIMES

- 45 minutes to Walt Disney World
- 35 minutes to Sea World and Orlando International Airport
- 1 hour 15 minutes to east coast beaches

LAND FOR SALE

— Commercial Real Estate Investments | Management | Brokerage | Development | Land

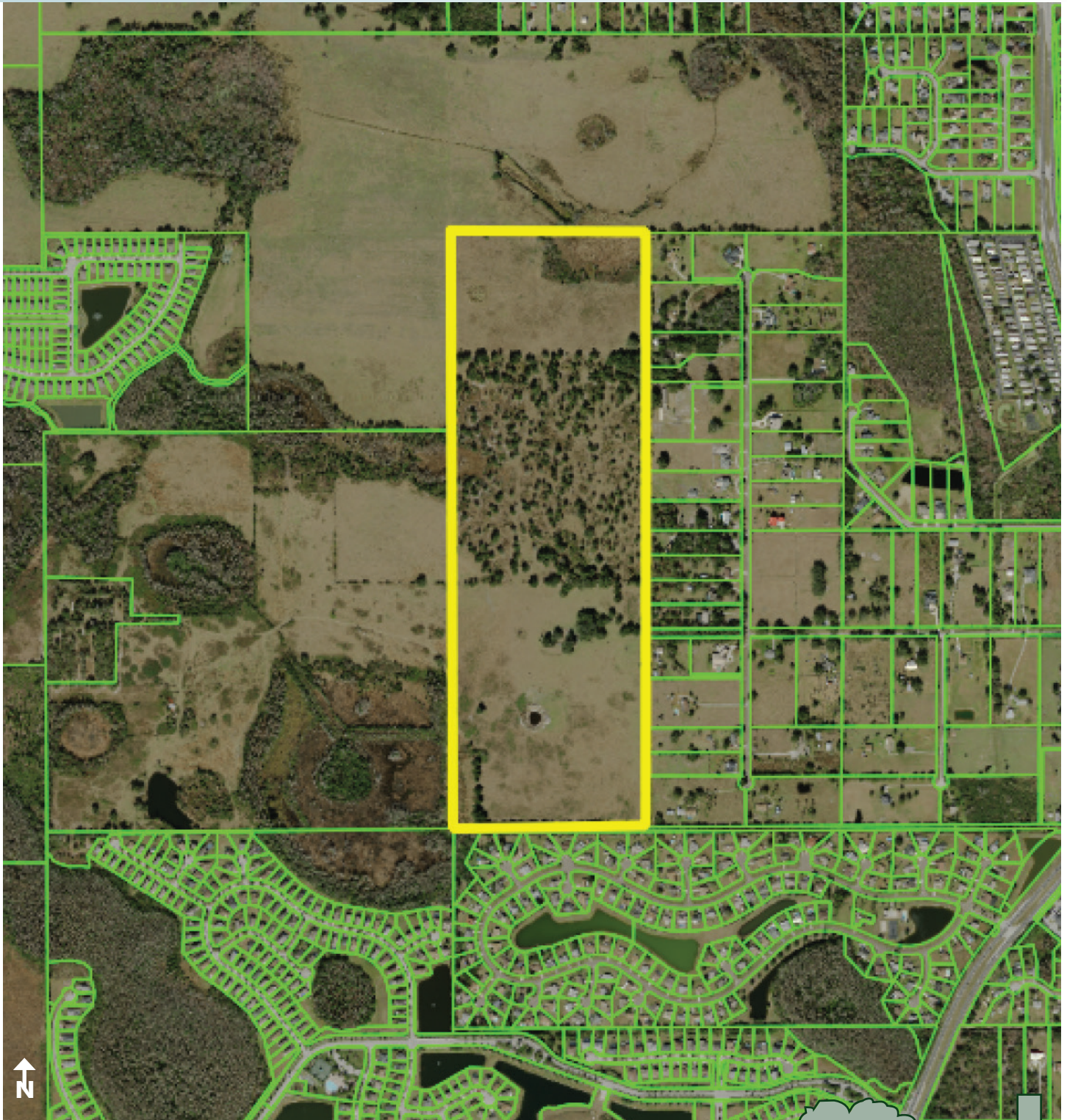
Maury L. Carter & Associates, Inc.  
407-422-3144 | [www.maurycarter.com](http://www.maurycarter.com)



# PRIME DEVELOPMENT LAND

120± acres

Osceola County, FL



PROPERTY MAP

— Commercial Real Estate Investments | Management | Brokerage | Development | Land

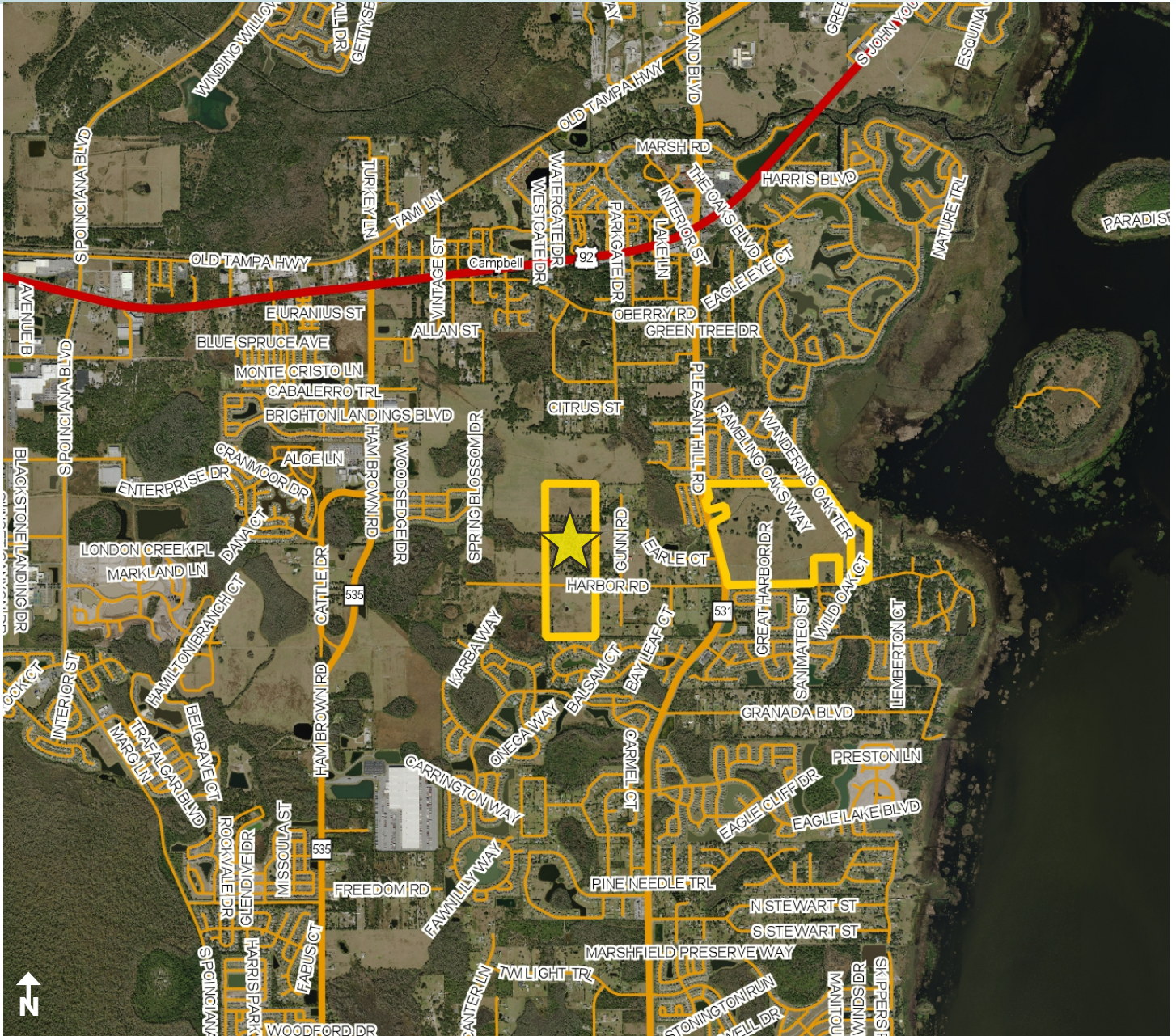
Maury L. Carter & Associates, Inc.  
407-422-3144 | [www.maurycarter.com](http://www.maurycarter.com)



# PRIME DEVELOPMENT LAND

120± acres

Osceola County, FL



LOCATION MAP

— Commercial Real Estate Investments | Management | Brokerage | Development | Land

Maury L. Carter & Associates, Inc.  
407-422-3144 | [www.maurycarter.com](http://www.maurycarter.com)

