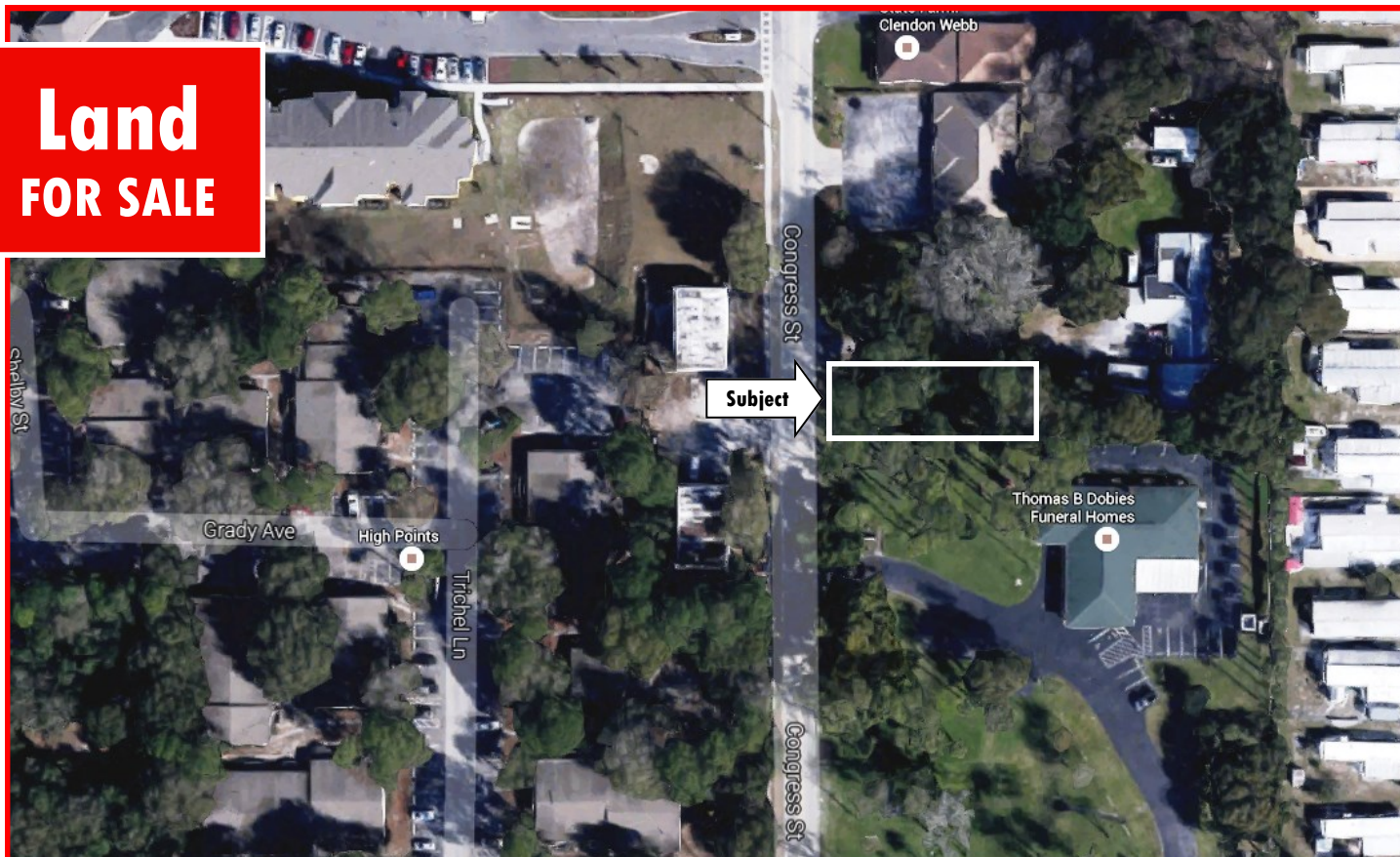


**Land  
FOR SALE**



## CONGRESS STREET, NEW PORT RICHEY, FL

### PROPERTY HIGHLIGHTS

- Vacant parcel within city limits
- Located between Massachusetts & Indiana
- Situated in a corridor of office properties
- 50 feet of frontage on Congress Street
- 7,500 total square feet of land
- Partially wooded, high and dry lot
- Zoning: Commercial
- Ideal location for professional office and commercial use

**Offered at: \$67,500**

FOR INFORMATION, CONTACT:

**John R. Grey**

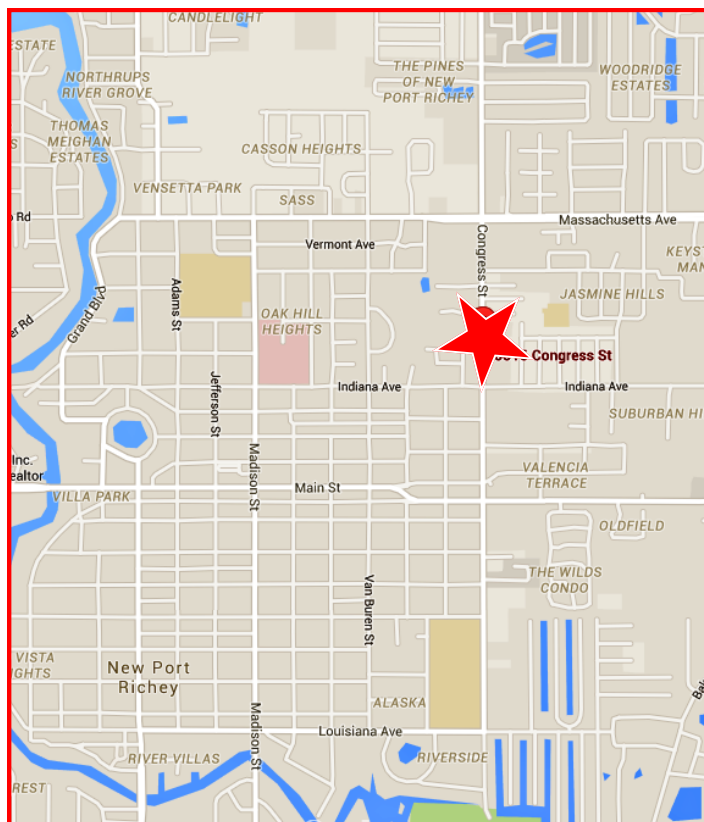
info@figrey.com

or

**Charles R. Grey**

Chuck@figrey.com

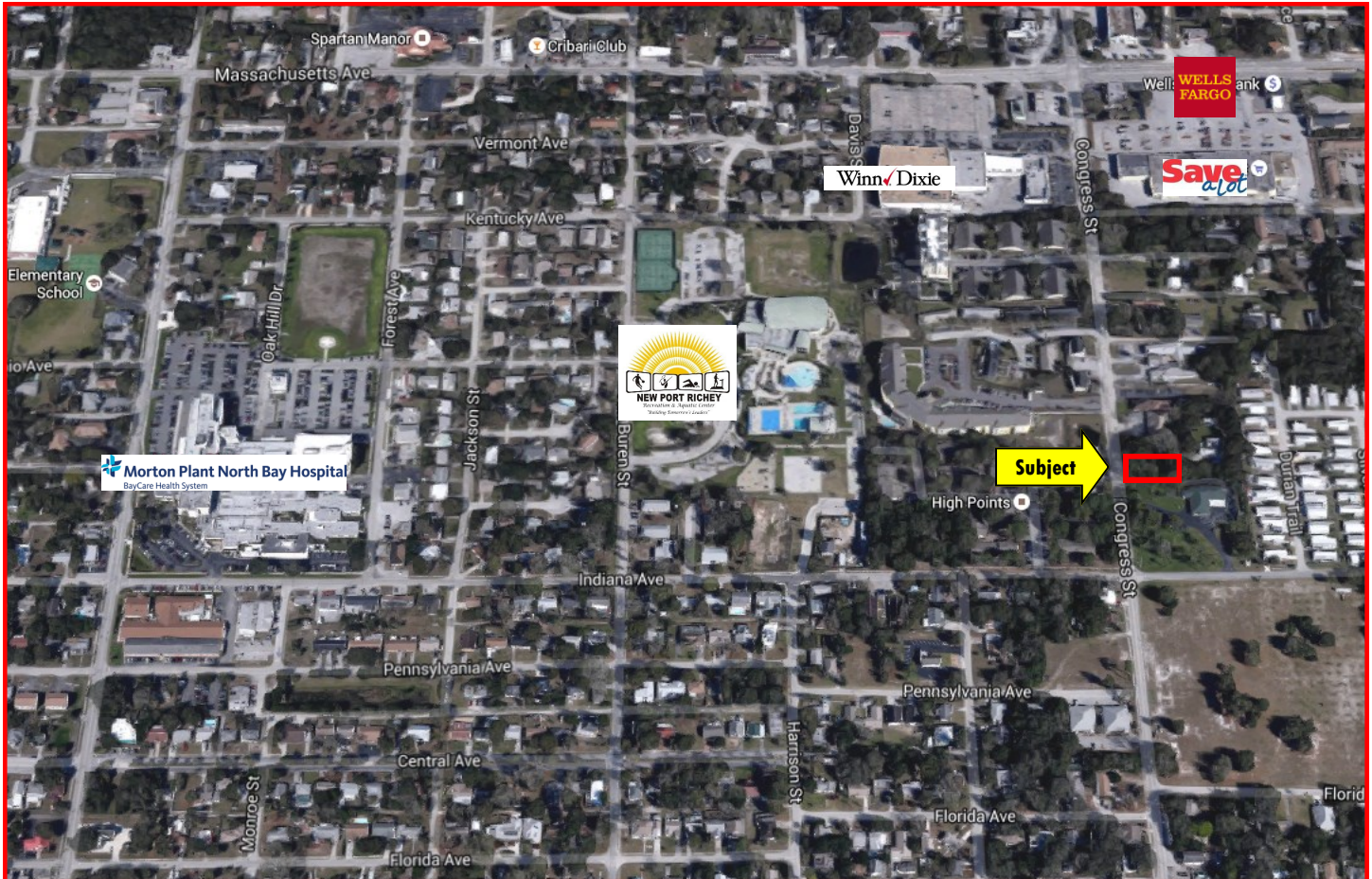
Office: (727) 849-2424



5636 GRAND BLVD., SUITE A, NEW PORT RICHEY, FL 34652 (727) 849-2424 WWW.FIGREY.COM



# CONGRESS STREET, NEW PORT RICHEY FL 34652



## DEMOGRAPHICS

<i>Radius</i>	<i>1-Mile</i>	<i>3-Mile</i>	<i>5-Mile</i>
<b>Population:</b>	<b>11,372</b>	<b>71,408</b>	<b>149,144</b>
<b>Households:</b>	<b>5,194</b>	<b>31,747</b>	<b>64,366</b>
<b>Average HH Income:</b>	<b>\$47,426</b>	<b>\$51,755</b>	<b>\$54,249</b>
<b>Traffic Counts:</b>	<b>1,650 AADTV on Congress St.</b>		

## PROPERTY STATISTICS

<b>Proposed Use:</b>		<b>Commercial/Office</b>	
<b>Size:</b>	<b>7,500SF</b>	<b>Topography:</b>	<b>High &amp; Dry</b>
<b>Zoning:</b>	<b>Commercial</b>	<b>Dimensions:</b>	<b>50'x150'</b>
<b>Taxes:</b>		<b>\$527</b>	

FOR INFORMATION, CONTACT:

**John R. Grey**

info@figrey.com

or

**Charles R. Grey**

Chuck@figrey.com

Office: (727) 849-2424



COMMERCIAL REALTOR®

*Established 1924*

*Serving Florida  
for over 90 years!*



5636 GRAND BLVD., SUITE A, NEW PORT RICHEY, FL 34652 (727) 849-2424 WWW.FIGREY.COM

The information given herewith is obtained from sources we consider reliable. We are not responsible for misstatements of facts, errors, omissions, changes in terms or conditions, or withdrawal from the market without prior notice.