

0.50± ACRE HOMESITE CLOSE TO HIDEAWAY GOLF CLUB

FOR SALE

BLUE SAGE DRIVE, NAPLES, FL, 34117



GREAT LAND INVESTMENT OPPORTUNITY

- PRICE:** \$70,000
- SIZE:** 0.50± Acre (82.5'± x 264'±)
- LOCATION:** From Collier Blvd, east on White Blvd to south on 23rd Street SW, to west on Brantley Blvd, to north on Blue Sage Drive
- ZONING:** A - Agriculture | RFMUO-NBMO-NEUTRAL (Rural Fringe Mixed Use Overlay-North Belle Meade Overlay District)
- UTILITIES:** Well & Septic
- RE TAXES:** \$104.64 (2022)
- PARCEL ID:** 61731571009

0.50± ACRE HOMESITE

0.50± acre homesite in private secluded area of Golden Gate Estates, just north of the 105-acre Hideout Golf Course, overlooking 70 acres of Collier County owned land. This is your opportunity to own a piece of unspoiled Florida wilderness in a rural location near everything Southwest Florida has to offer. This wooded lot offers the ultimate privacy, yet it is approximately 6 miles from restaurants, shopping, groceries and other local amenities, and less than 10 miles from I-75. Adjacent 6 lots may also be available.

CONTACT

FRED KERMANI, CCIM, AIA
Partner
239.659.4960

Fred.Kermani@CREConsultants.com
www.CREConsultants.com/FredKermani

12140 Carissa Commerce Ct, Suite 102
Fort Myers, FL 33966
1100 Fifth Ave. S, Suite 404
Naples, FL 34102

The information contained herein was obtained from sources believed reliable. CRE Consultants makes no guarantees, warranties or representations as to the completeness or accuracy thereof, and is subject to errors, omissions, change of price or conditions prior to sale or lease, or withdrawal without notice. 02/07/23

0.50± ACRE HOMESITE CLOSE TO HIDEAWAY GOLF CLUB

FOR SALE

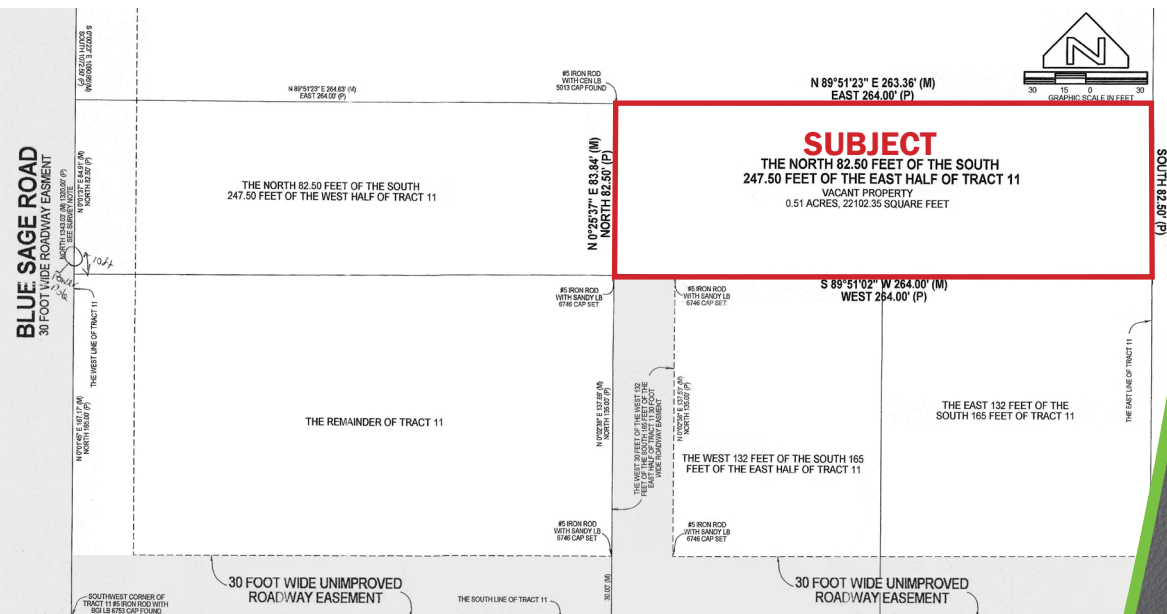
BLUE SAGE DRIVE, NAPLES, FL, 34117



HIGHLIGHTS

- Enjoy the peaceful, country lifestyle of Golden Gate Estates, with quick access to the beautiful beaches
- Located 6± miles east of Collier Boulevard
- Privacy but easy access to area shops, restaurants and other points of interest
- Adjacent 6 Lots may also be available

SURVEY



CONTACT

FRED KERMANI, CCIM, AIA
Partner
239.659.4960
Fred.Kermani@CREConsultants.com
www.CREConsultants.com/FredKermani

2022 DEMOGRAPHICS	1 MILES	3 MILES	5 MILES
EST. POPULATION	2,386	38,567	86,491
EST. HOUSEHOLDS	820	12,009	32,814
EST. MEDIAN HOUSEHOLD INCOME	\$77,852	\$60,068	\$72,705

The information contained herein was obtained from sources believed reliable. CRE Consultants makes no guarantees, warranties or representations as to the completeness or accuracy thereof, and is subject to errors, omissions, change of price or conditions prior to sale or lease, or withdrawal without notice.