

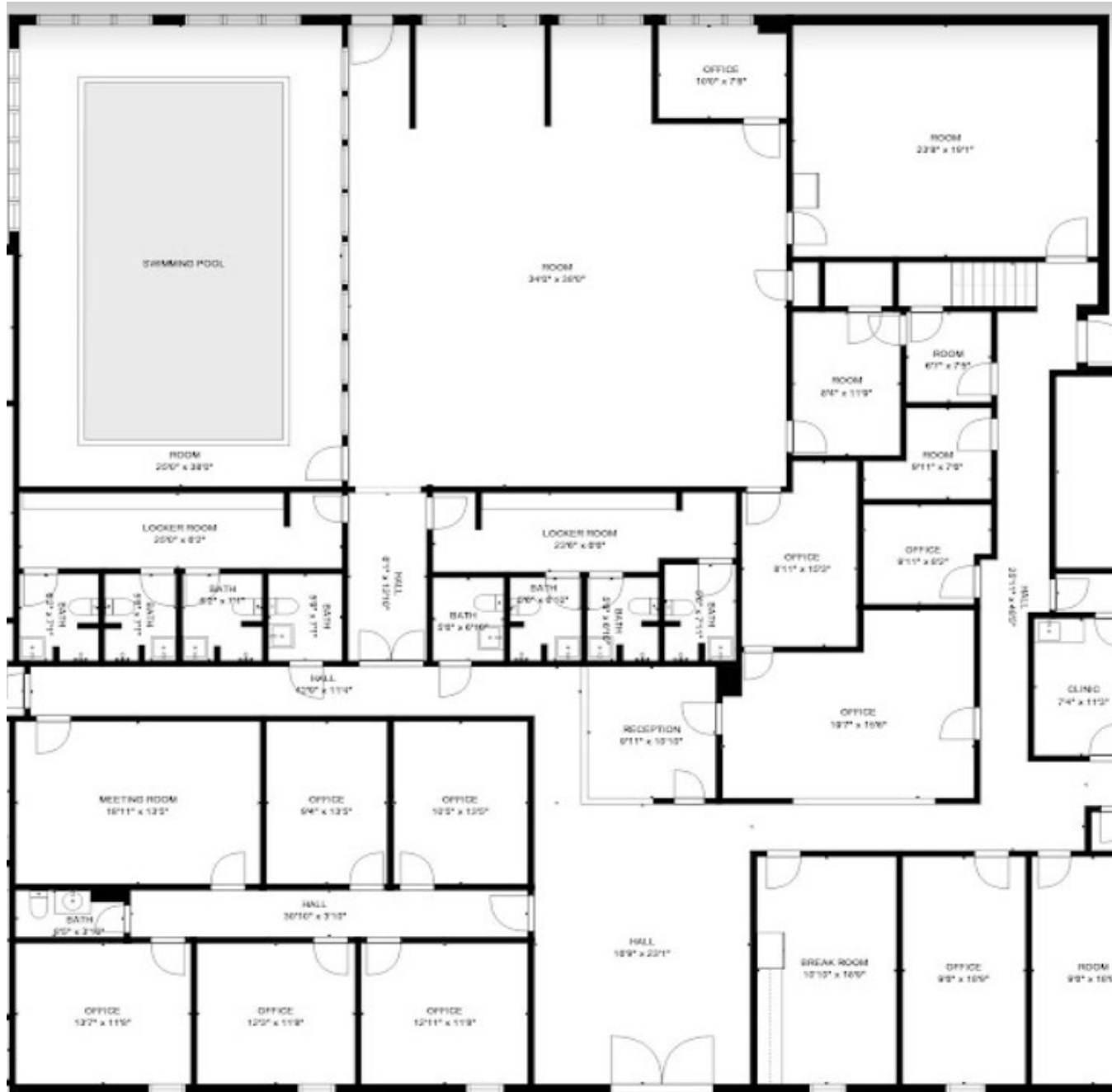
1430 Mason Avenue Daytona Beach, FL 32117
East End

Current Configuration: Nine Exam Rooms, Five Consultation Rooms, Five Office Spaces, Six Bathrooms, Lobby/Waiting Room, Plenty of Storage, Dedicated Entrance



1430 Mason Avenue Daytona Beach, FL 32117
Center Section

Current Configuration: Indoor ___ x ___ Pool, Fitness Facility, PT Space, Two Locker Rooms, Reception/Waiting Room, Six Offices, Conference Room, Three Flex Rooms, Dedicated Entrance



1430 Mason Avenue Daytona Beach, FL 32117
West End

Current Configuration: 24.9" x 16.4" Copper Top MRI , Two Additional X-ray or Diagnostic Equipment Rooms, Three Offices, Reception/Waiting Room, Five Bathrooms, Fourteen Flex Rooms, Four Room Clinic Set Up, Laundry Room, Dedicated Entrance



1430 Mason Avenue Daytona Beach, FL 32117

Second Floor 37.6" x 64"

Accessed from the West End Section. Currently open and used for storage.

