



TRIUMPH
PROPERTY SERVICES

For Lease

Office/Flex Warehouse Space

[View Online](#)

3600 S Congress Avenue, Boynton Beach, FL

This class 'A' flex space is conveniently located on Congress Avenue between Woolbright Road and Atlantic Avenue in the Boynton Beach submarket. The property benefits from its central location and offers first-class office finishes, rear warehouse areas with high ceilings and grade-level loading doors.

- ±1,891 - 3,498 SF available
- Class 'A' office service
- Plenty of parking
- Competitive rental rates
- ±18' clear ceiling height
- Grade-level rear loading doors
- Direct frontage and visibility on Congress Avenue
- Easily accessible location

For Lease

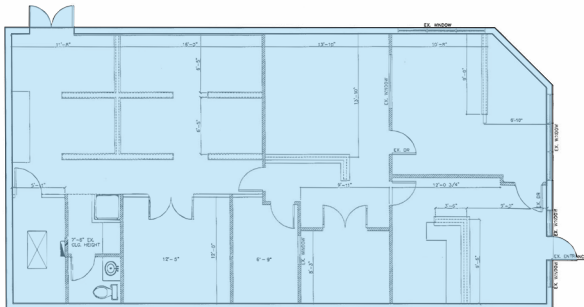
Office/Flex Warehouse Space

3600 S Congress Avenue

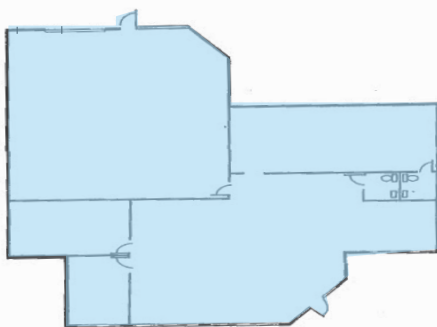


Click Suite Below to View Larger Floor Plan 

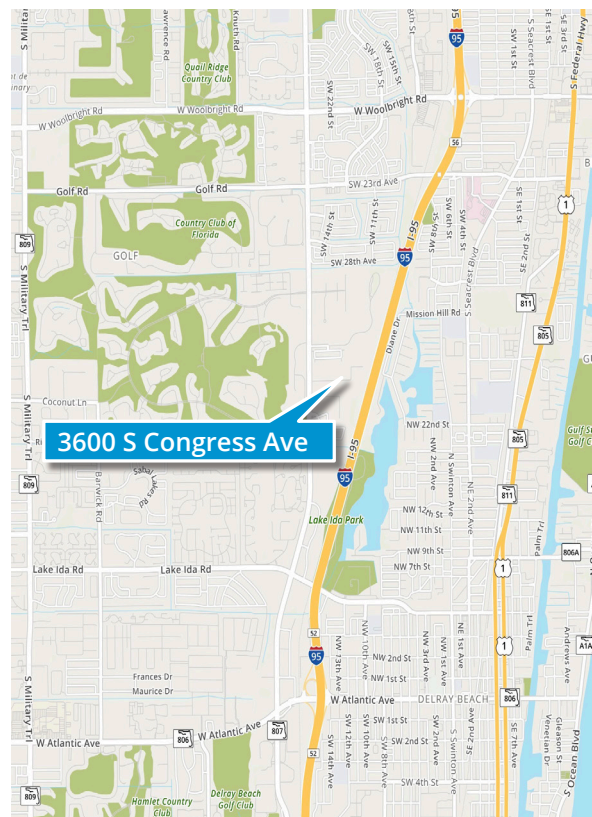
First Floor - Unit N - 1,891 SF



First Floor - Unit B - 3,498 SF



Location Aerial



Contact us:

Scott Weprin
Executive Director
+1 561 239 9386
scott.weprin@colliers.com

Michael Falk SIOR CCIM
Executive Managing Director
+1 561 662 2624
michael.falk@colliers.com

Jason Weprin
Associate
+1 561 558 7709
jason.weprin@colliers.com

Colliers International Florida, LLC
901 Northpoint Pkwy, Suite 109
West Palm Beach, FL 33407
P: +1 561 478 6400



This document has been prepared by Colliers International for advertising and general information only. Colliers International makes no guarantees, representations or warranties of any kind, expressed or implied, regarding the information including, but not limited to, warranties of content, accuracy and reliability. Any interested party should undertake their own inquiries as to the accuracy of the information. Colliers International excludes unequivocally all inferred or implied terms, conditions and warranties arising out of this document and excludes all liability for loss and damages arising there from. This publication is the copyrighted property of Colliers International and/or its licensor(s). ©2021 All rights reserved.