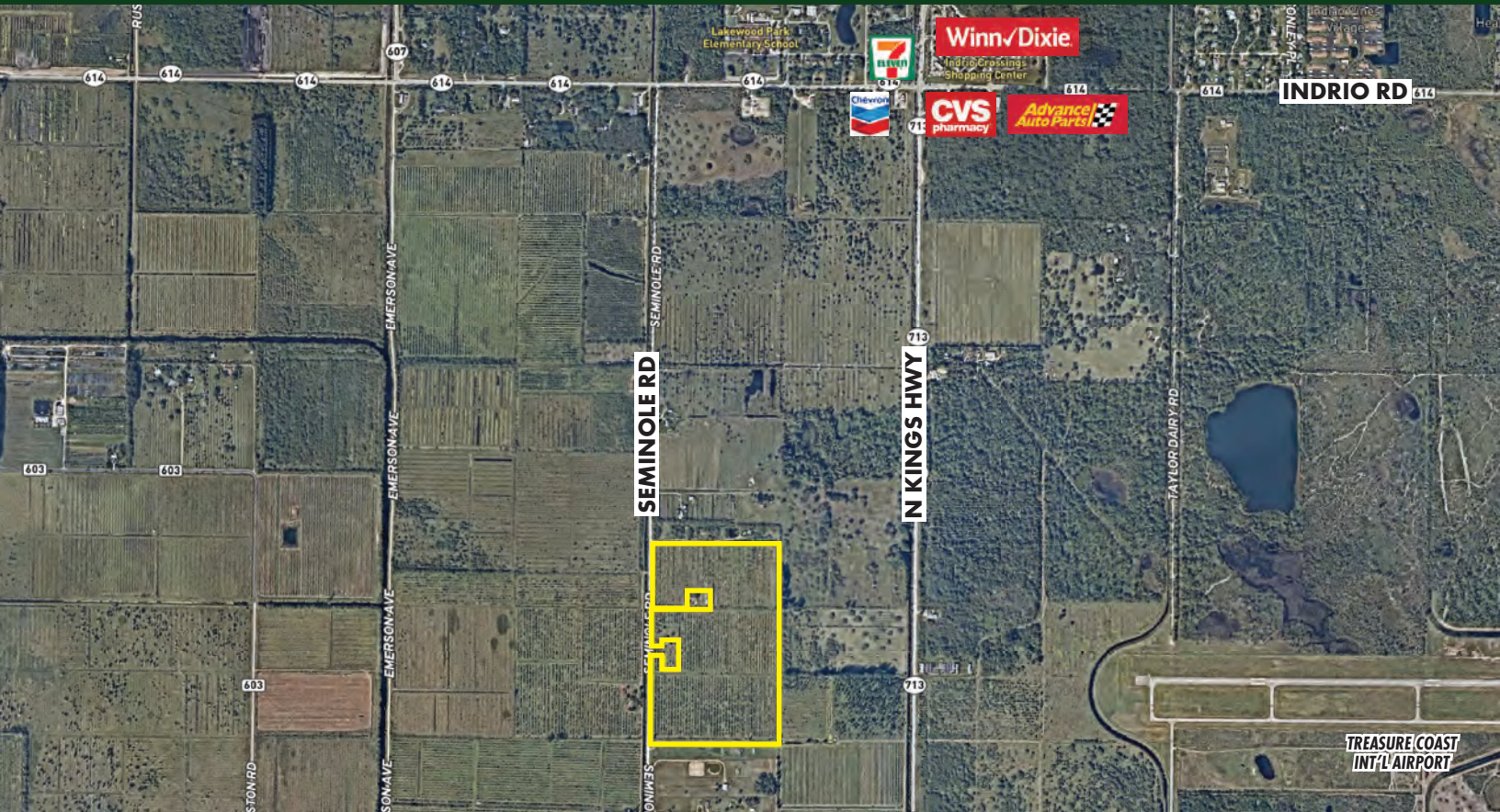


**FOR
SALE**

57 AC DEVELOPMENT OPPORTUNITY IN RAPIDLY GROWING ST. LUCIE COUNTY

Seminole Road, Fort Pierce, FL 34951



ABOUT THE PROPERTY

SIZE 57± acres

PRICE \$2,850,000

ZONING AG-1 Count

FLU TVC (Towns, Villages and Countryside)

UTILITIES Water lines available 1 mile north along Indrio Rd

ROAD FRONTAGE 2,000'± on Seminole Rd

PARCEL ID 1323-421-0001-000-5
1323-133-0010-000-7

DESCRIPTION

Ideal location! This 57-acre property was formerly a tree farm and is located on Seminole Rd in St. Lucie County, FL. Positioned south of Vero Beach and the Indian River County line. The site is less than 10 miles from Seaway Dr. Convenient access to I-95, just 3.5 miles from the property. The Indrio Crossings Shopping Center is just 1.5 miles away. High and dry with no wetlands on the property. There are over 220 active development projects in St. Lucie. These nearby development plans include Publix, residential communities, storage facilities, recreational vehicle parks and much more.

Call for a showing today!

MAURY L. CARTER & ASSOCIATES, INC.

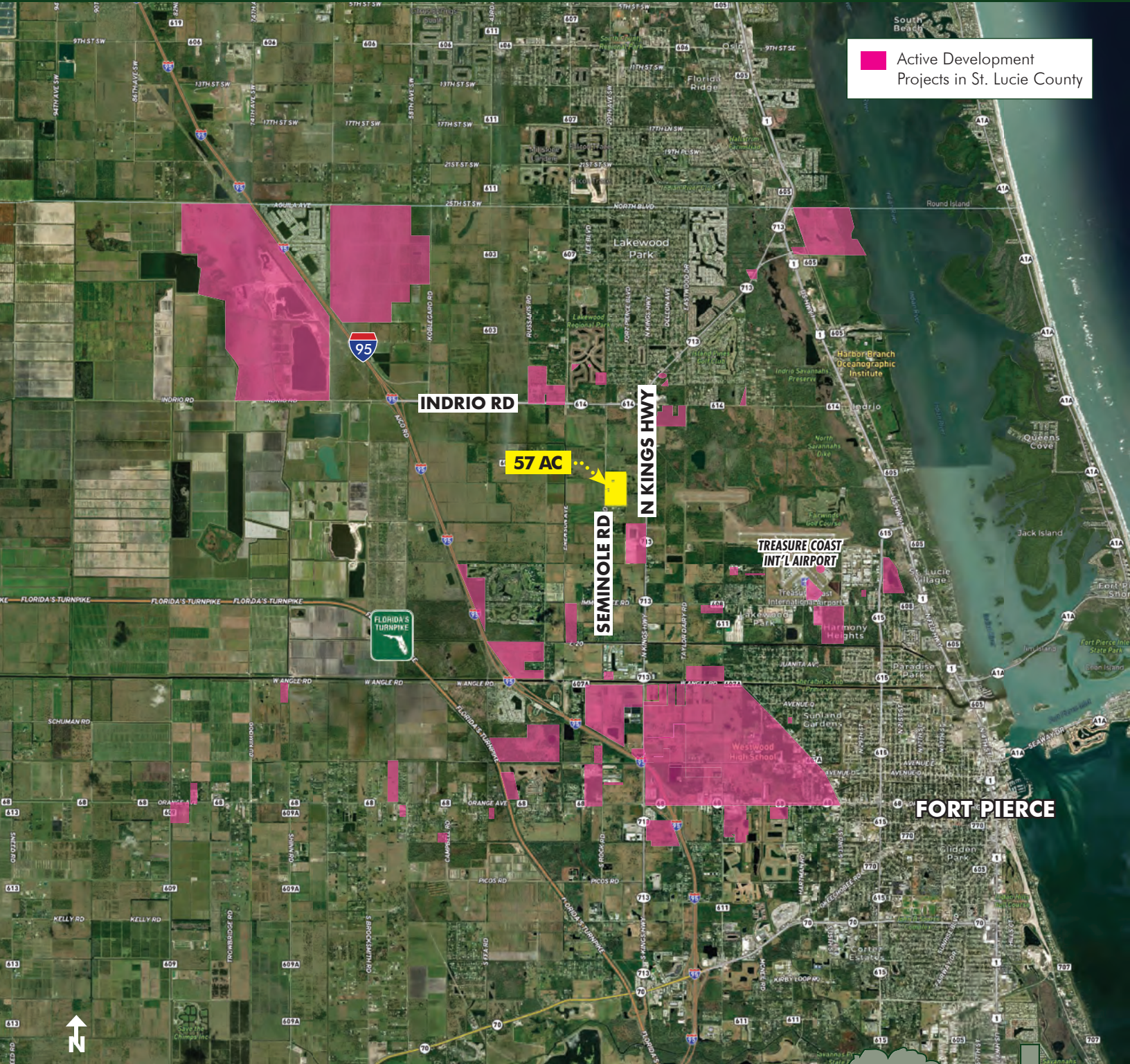
Licensed Real Estate Brokers | www.maurycarter.com | 407-422-3144



**FOR
SALE**

57 AC DEVELOPMENT OPPORTUNITY IN RAPIDLY GROWING ST. LUCIE COUNTY

Seminole Road, Fort Pierce, FL 34951



Active Development
Projects in St. Lucie County

57 AC

INDRIO RD

N KINGS HWY

SEMINOLE RD

TREASURE COAST
INT'L AIRPORT

FORT PIERCE

REGIONAL MAP

MAURY L. CARTER & ASSOCIATES, INC.

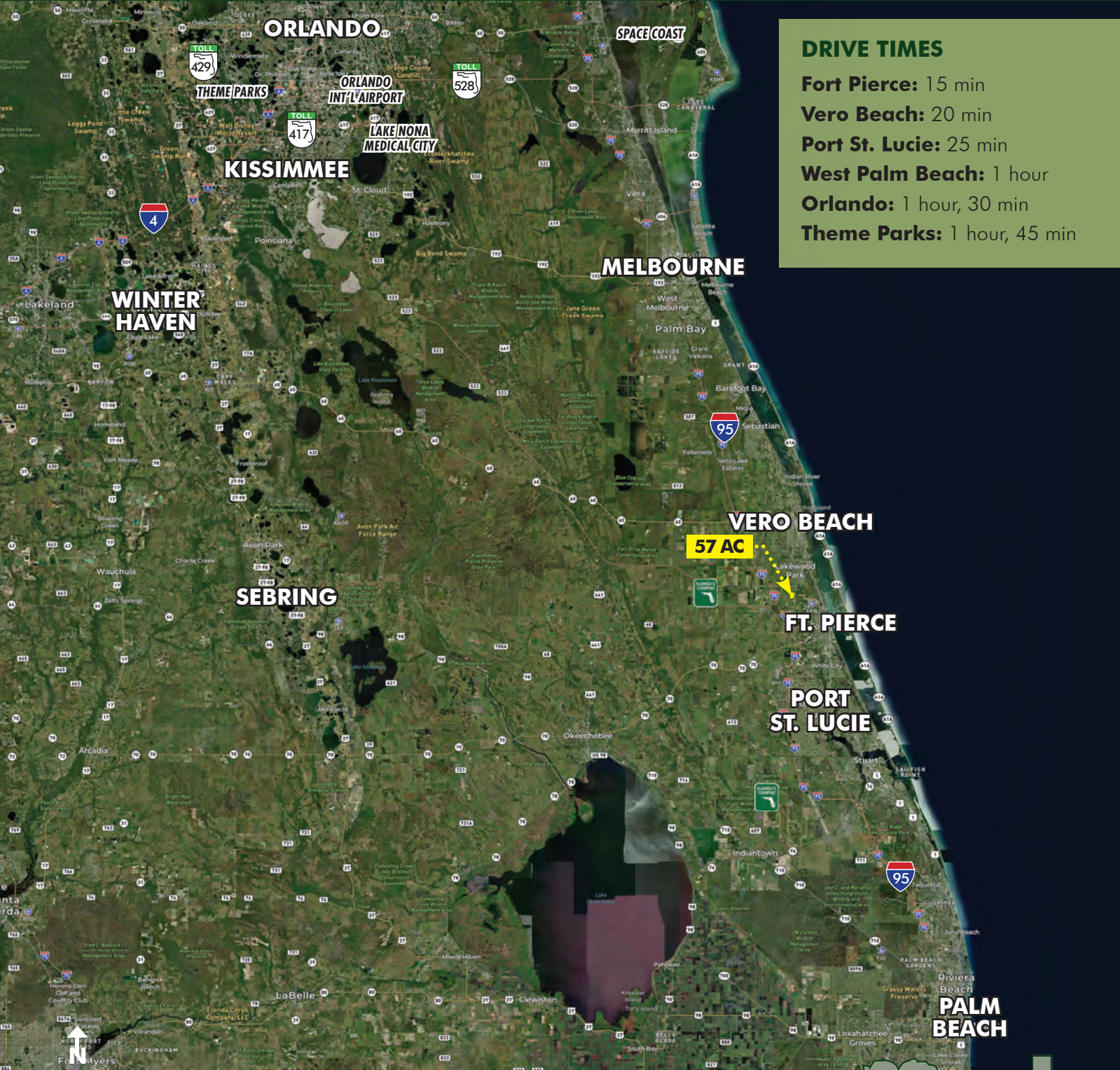
Licensed Real Estate Brokers | www.maurycarter.com | 407-422-3144



**FOR
SALE**

57 AC DEVELOPMENT OPPORTUNITY IN RAPIDLY GROWING ST. LUCIE COUNTY

Seminole Road, Fort Pierce, FL 34951



DRIVE TIMES

- Fort Pierce: 15 min
- Vero Beach: 20 min
- Port St. Lucie: 25 min
- West Palm Beach: 1 hour
- Orlando: 1 hour, 30 min
- Theme Parks: 1 hour, 45 min

LOCATION MAP

MAURY L. CARTER & ASSOCIATES, INC.
Licensed Real Estate Brokers | www.maurycarter.com | 407-422-3144

