

**FOR
SALE**

180 AC CENTRAL FLORIDA LAKEFRONT APPROVED PLAN FOR 560 SF UNITS

Pleasant Hill Rd, Kissimmee, FL 34746



ABOUT THE PROPERTY

SIZE 180± acres

ZONING Low Density Residential

UTILITIES Kissimmee Utility Authority
Toho Water Authority

ROAD FRONTAGE 1,100'± on Pleasant Hill Rd
1,500'± on Harbor Rd

DESCRIPTION

Great location! Prime lakefront property with an approved 560-unit Preliminary Subdivision Plan located in the heart of Central Florida. The property fronts on Lake Toho, a major bass fishing lake; part of the Kissimmee Chain of Lakes. Significant frontage on Pleasant Hill Road and Harbor Road. Minutes to downtown Kissimmee, NeoCity, the Kissimmee Airport and major theme parks.

This is truly one of the finest properties left in Central Florida. Call for a showing today!

MAURY L. CARTER & ASSOCIATES, INC.

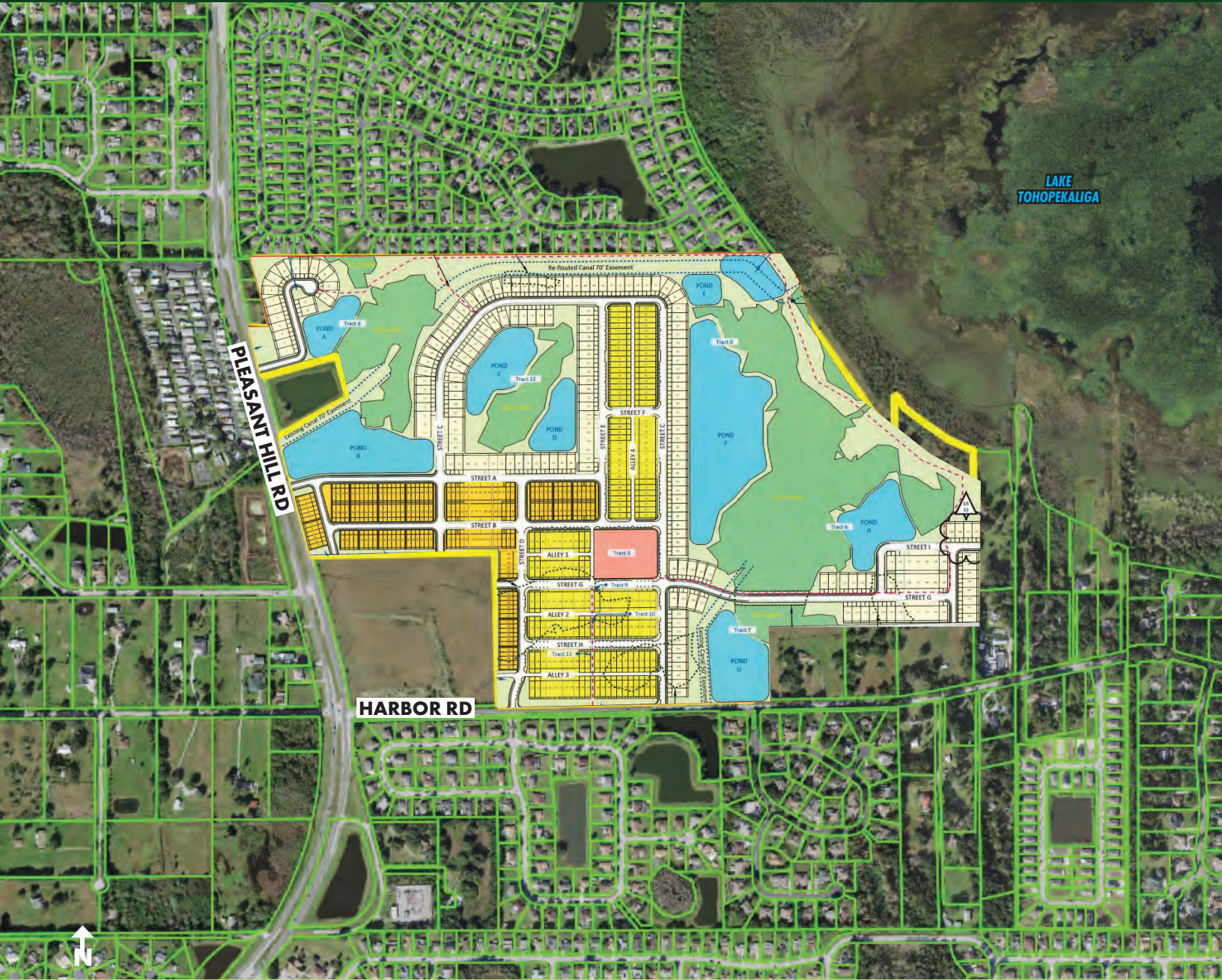
Licensed Real Estate Brokers | www.maurycarter.com | 407-422-3144



**FOR
SALE**

180 AC CENTRAL FLORIDA LAKEFRONT APPROVED PLAN FOR 560 SF UNITS

Pleasant Hill Rd, Kissimmee, FL 34746



PRELIMINARY SUBDIVISION PLAN

MAURY L. CARTER & ASSOCIATES, INC.

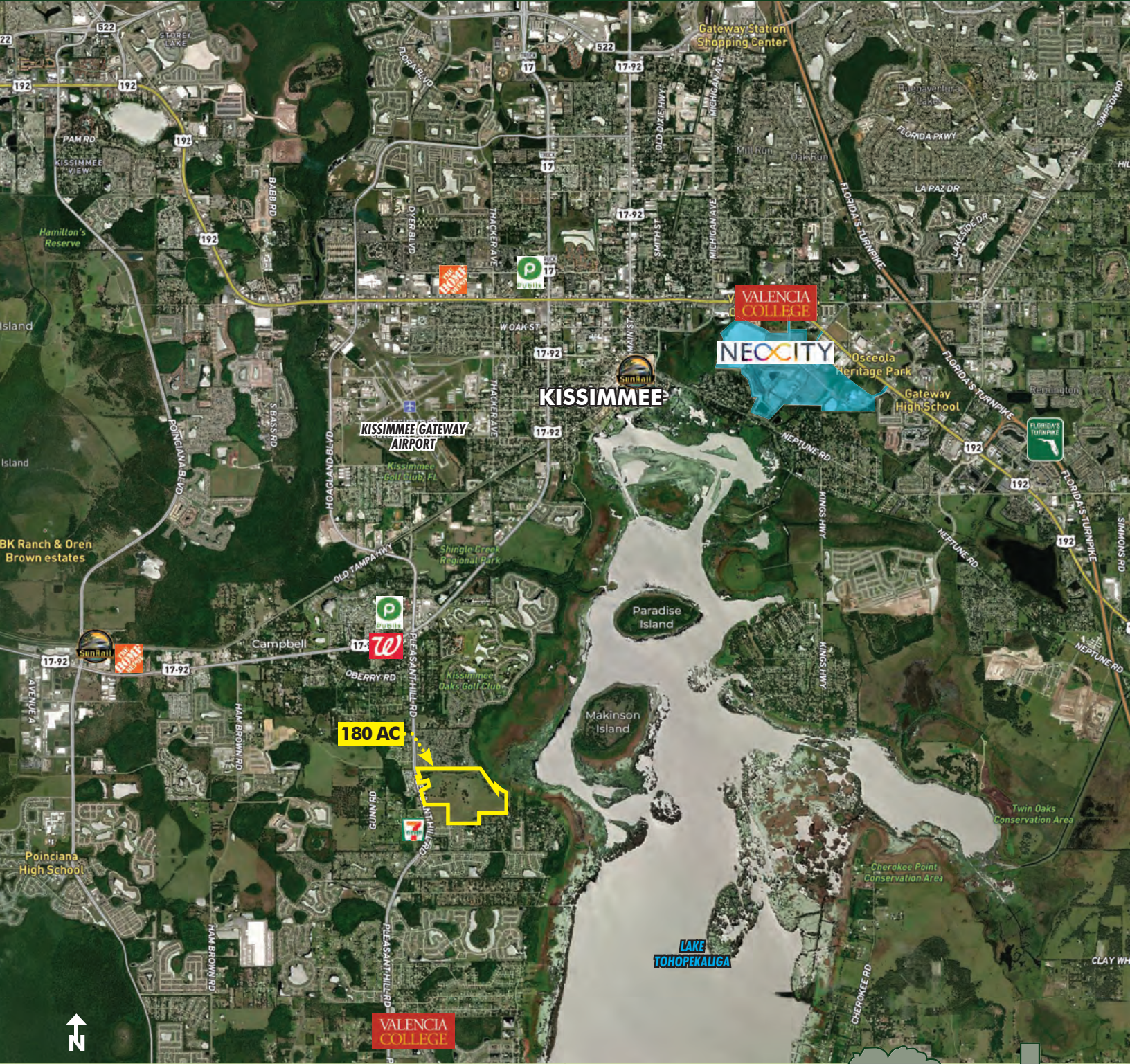
Licensed Real Estate Brokers | www.maurycarter.com | 407-422-3144



**FOR
SALE**

180 AC CENTRAL FLORIDA LAKEFRONT APPROVED PLAN FOR 560 SF UNITS

Pleasant Hill Rd, Kissimmee, FL 34746



REGIONAL MAP

MAURY L. CARTER & ASSOCIATES, INC.

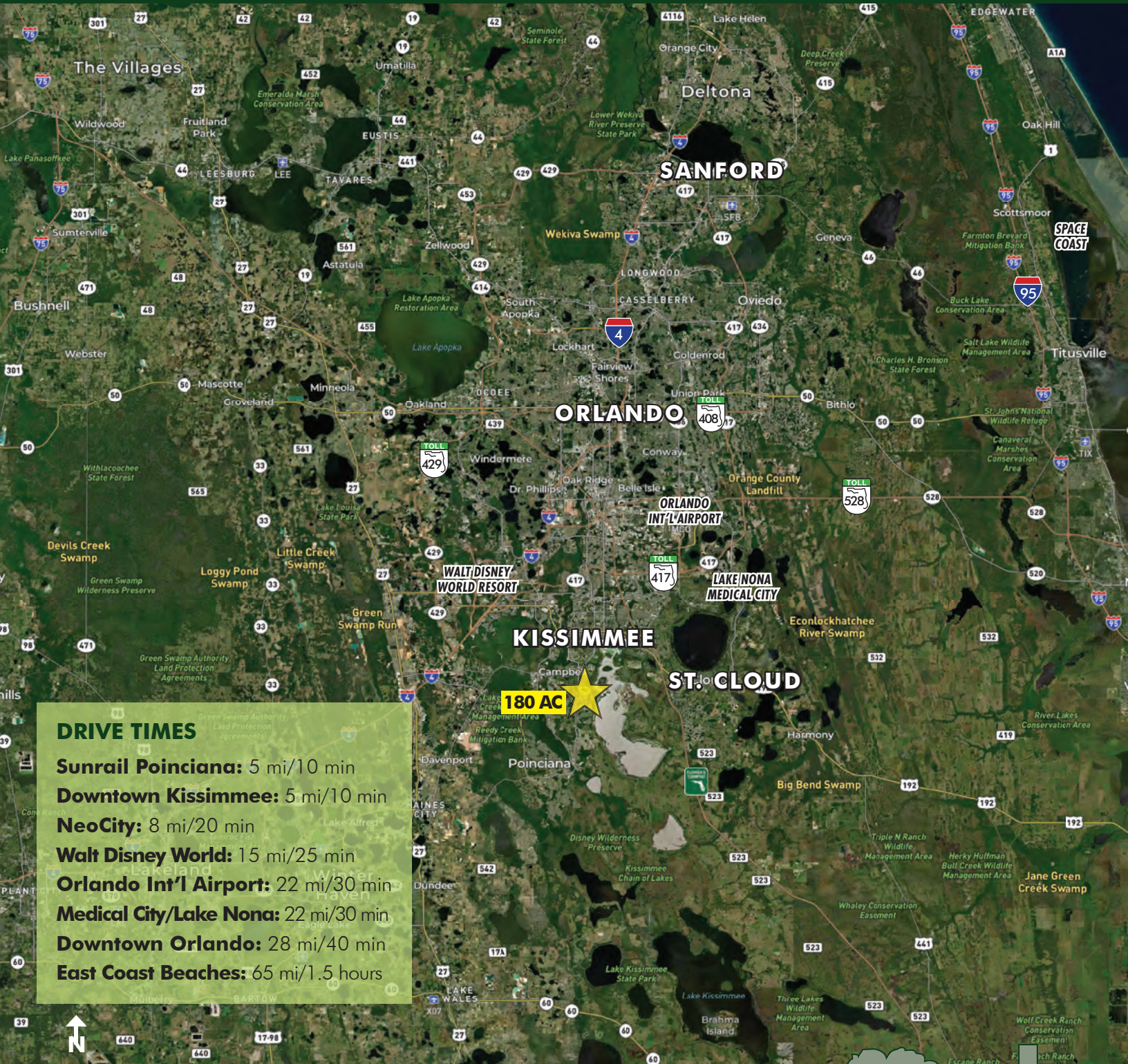
Licensed Real Estate Brokers | www.maurycarter.com | 407-422-3144



**FOR
SALE**

180 AC CENTRAL FLORIDA LAKEFRONT APPROVED PLAN FOR 560 SF UNITS

Pleasant Hill Rd, Kissimmee, FL 34746



MAURY L. CARTER & ASSOCIATES, INC.

Licensed Real Estate Brokers | www.maurycarter.com | 407-422-3144



Maury L. Carter & Associates, Inc.SM
Licensed Real Estate Broker