

HARBOR CROSSING - RETAIL CENTER

5275 US-1 | Vero Beach, FL 32967



FOR LEASE OR BTS - NEW RETAIL CENTER

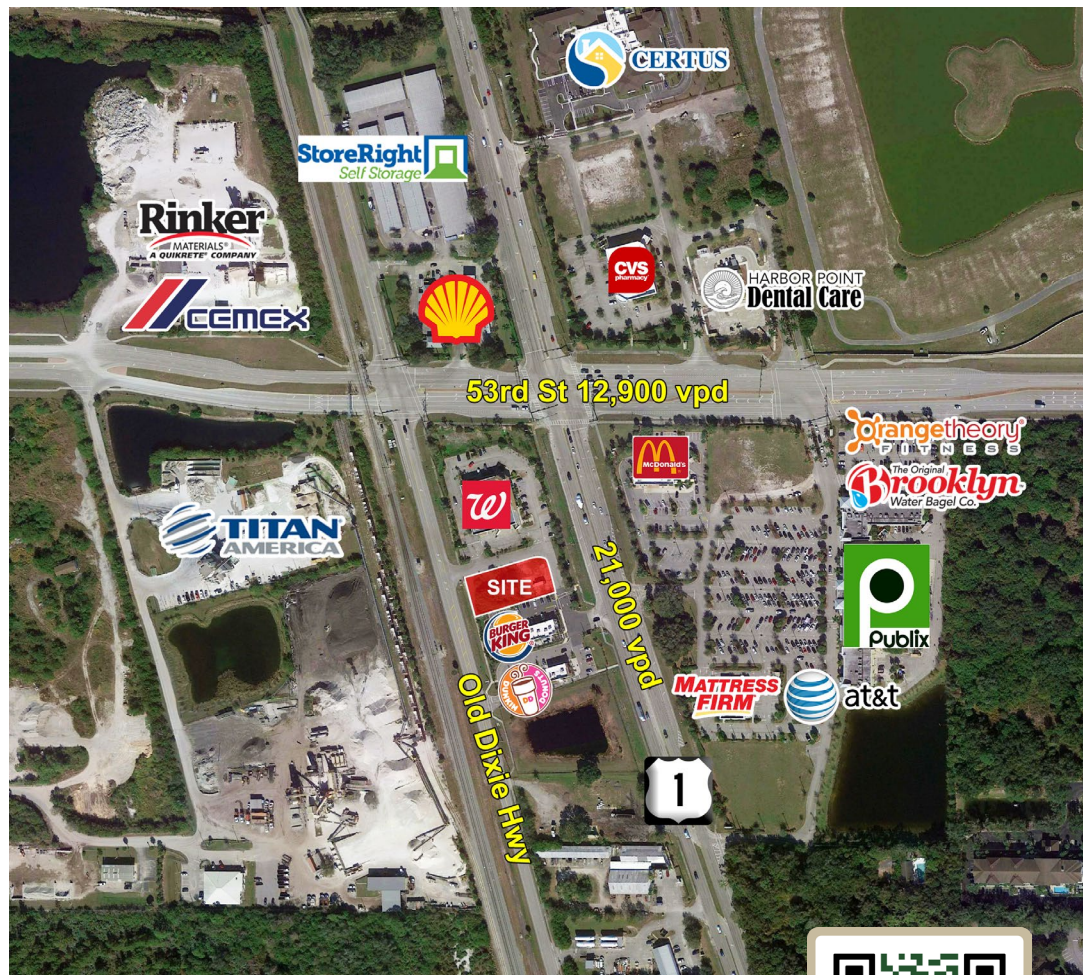


HIGHLIGHTS

- 0.70 Acre outparcel.
- Up to 6,400 SF available.
- Located adjacent to a new Walgreens, Burger King and Dunkin Donuts.
- Adjacent to high volume sales Publix.
- Strong demographics and household income \pm \$105,700.
- Located in a fast growing area of Vero Beach, near high-end new home developments.
- Available 4th Qtr 2022.

Traffic Counts

US Hwy 1: \pm 21,000 vpd

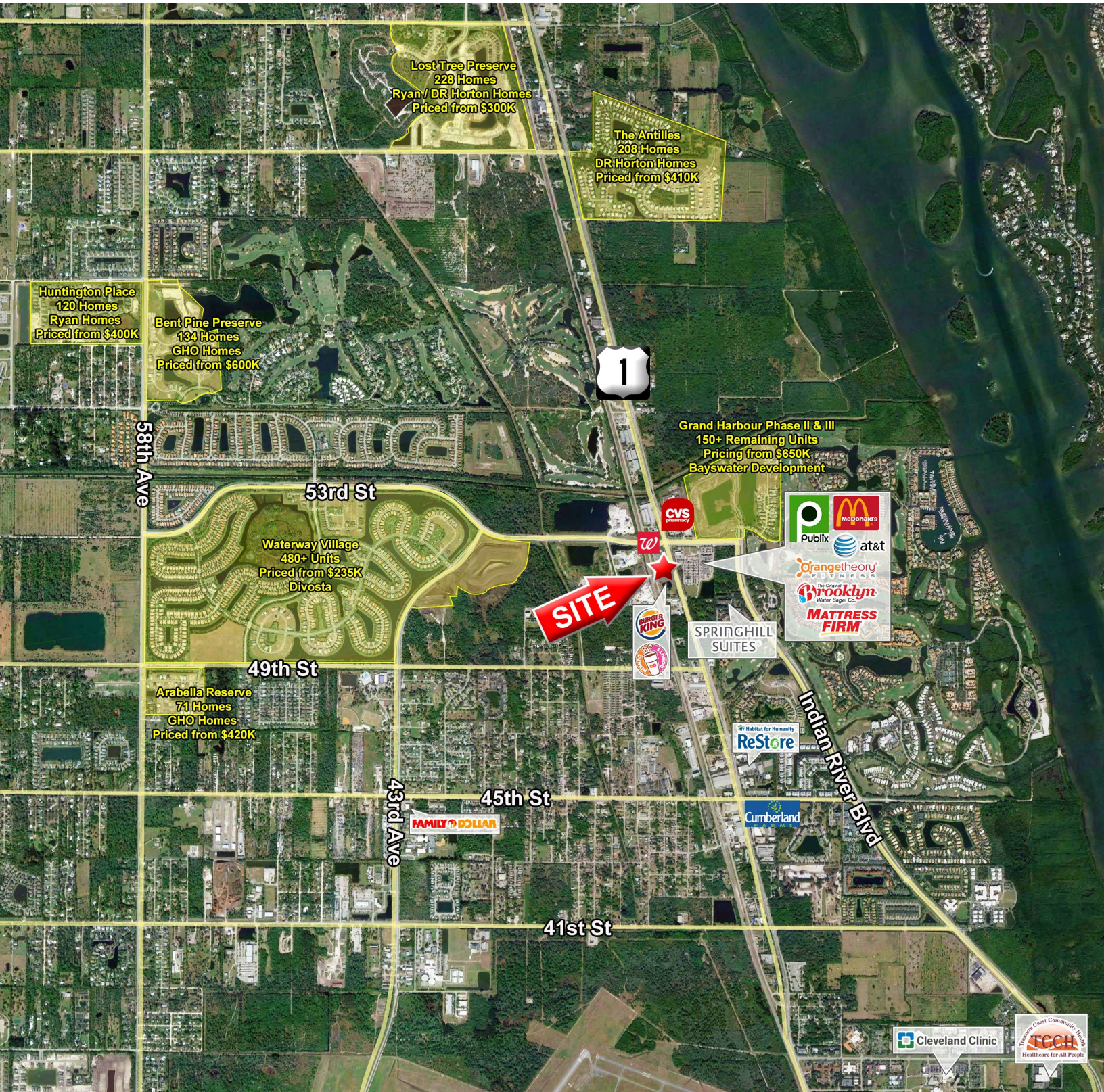


MONTE MITCHELL | Monte@FornessProperties.com | 407.988.0073
www.FornessProperties.com | Licensed Real Estate Broker



HARBOR CROSSING - RETAIL CENTER

5275 US-1 | Vero Beach, FL 32967



HARBOR CROSSING - RETAIL CENTER

5275 US-1 | Vero Beach, FL 32967

