

BAYSIDE BUSINESS PARK | COMMERCIAL CONDOS FOR SALE



PROPERTY DESCRIPTION

Two 1,800 SF Commercial Condos For Sale in Bayside Business Park.

Both units are 30' wide x 60' deep and have rear overhead doors.

Unit 2 has rear mezzanine storage.

Combined units have 10 offices, 3 restrooms, breakroom, and copy room.

Parking front and rear.

Easy access to Dunlawton Avenue and Nova Road.

LOCATION DESCRIPTION

Located just east of Spruce Creek Road on Sanders Road in Bayside Business Park.

LOCATION ADDRESS

794 Sanders Road, Suite 1 & 2
Port Orange, FL 32127

JOHN W. TROST, CCIM

Principal | Senior Advisor

O: 386.301.4581 | C: 386.295.5723

john.trost@svn.com

OFFERING SUMMARY

SALE PRICE:	Suite 1: \$250,000 Suite 2: \$250,000
AVAILABLE SF:	Suite 1: 1,800 SF Suite 2: 1,800 SF
CONDO FEES:	\$200 per month per unit
YEAR BUILT:	2003
PARCEL NO:	6310-27-00-7941 6310-27-00-7942
ZONING:	CI. Commercial Industrial

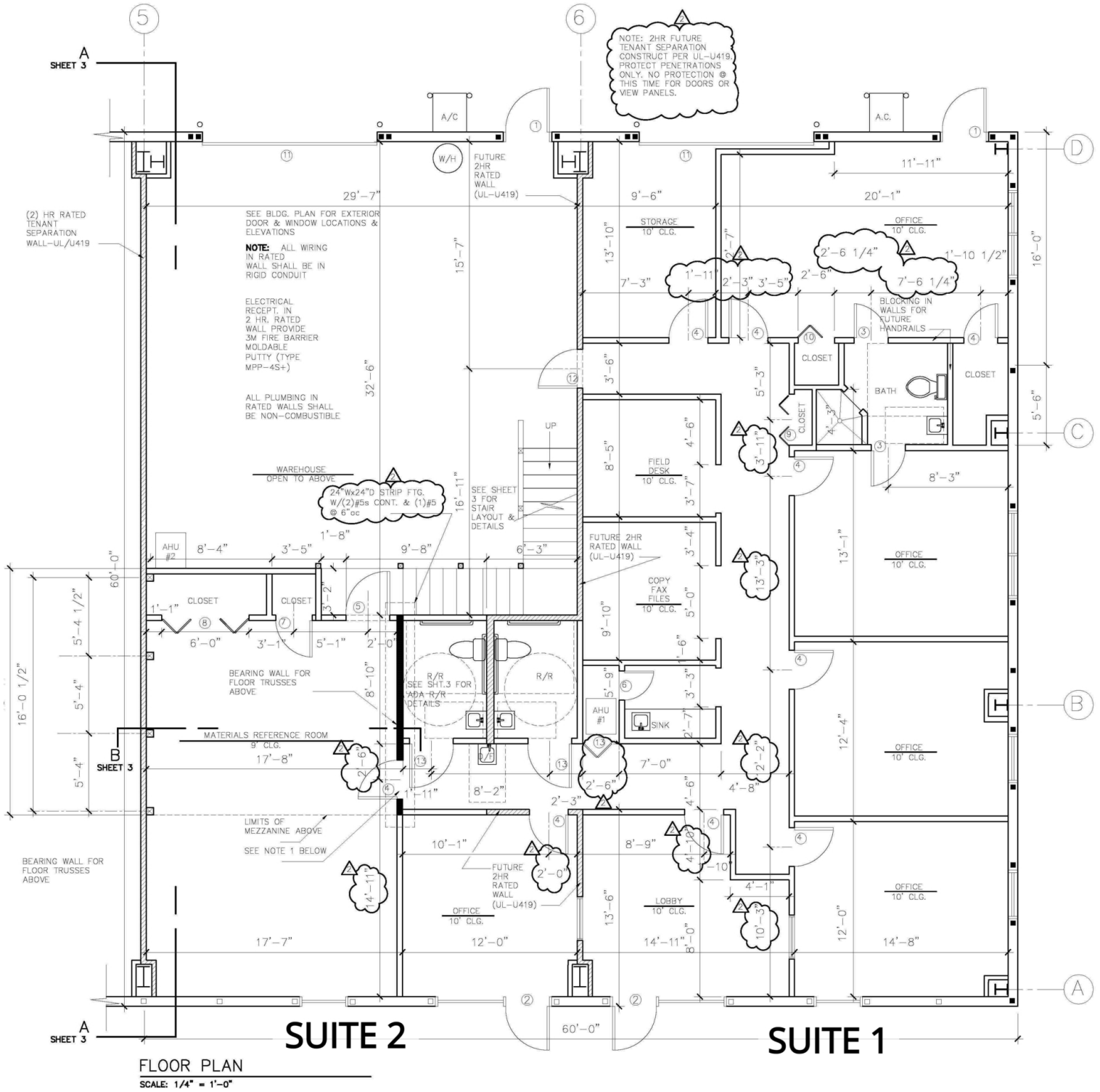
DEMOGRAPHICS	1 MILE	2 MILES	3 MILES
TOTAL HOUSEHOLDS	4,113	15,057	28,956
TOTAL POPULATION	7,286	27,207	53,276
AVERAGE HH INCOME	\$39,495	\$48,552	\$52,609

ADDITIONAL PHOTOS



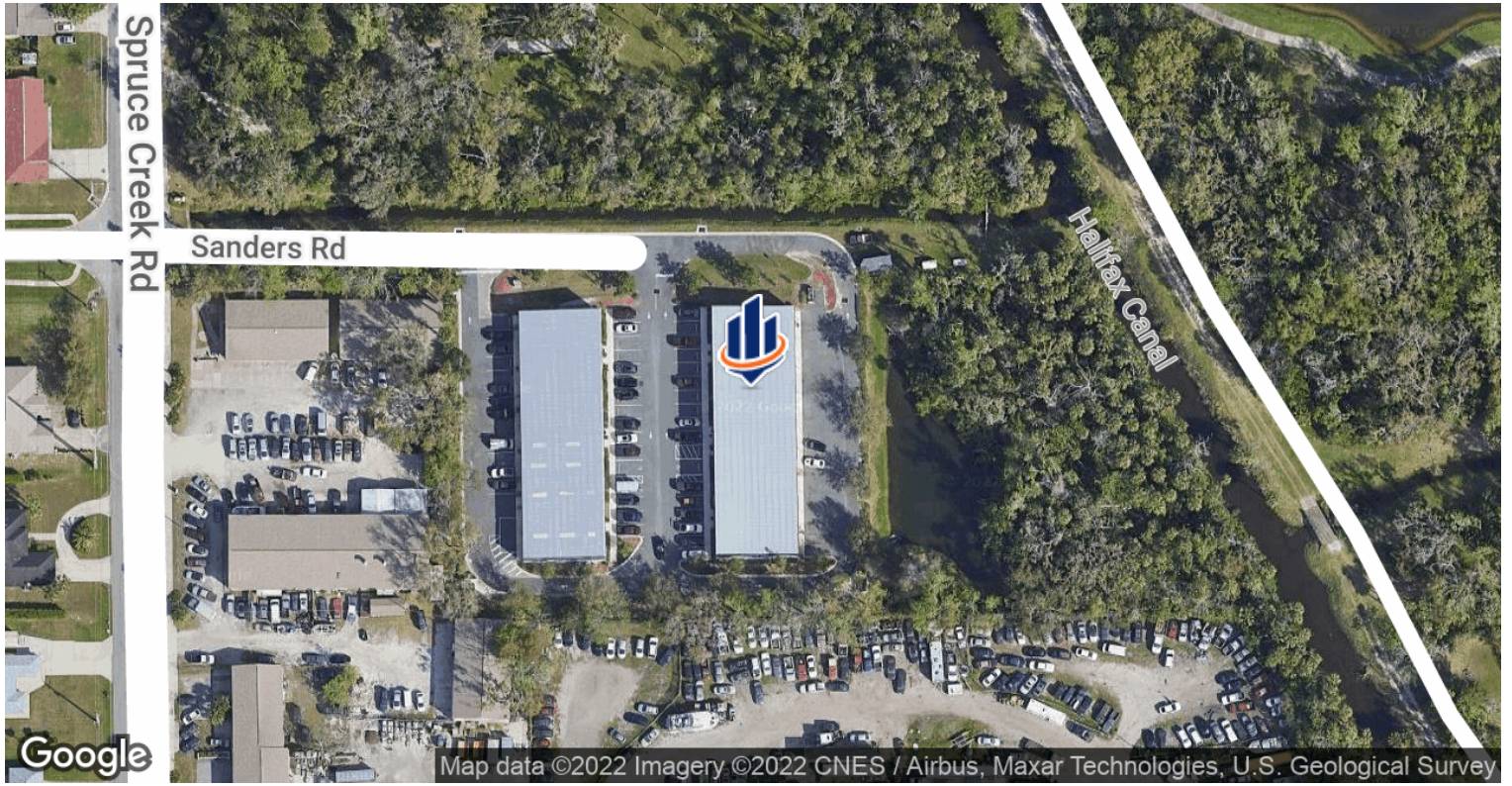
JOHN W. TROST, CCIM
Principal | Senior Advisor
O: 386.301.4581 | C: 386.295.5723
john.trost@svn.com

FLOOR PLAN



JOHN W. TROST, CCIM
 Principal | Senior Advisor
 O: 386.301.4581 | C: 386.295.5723
 john.trost@svn.com

LOCATION MAPS



JOHN W. TROST, CCIM
 Principal | Senior Advisor
 O: 386.301.4581 | C: 386.295.5723
 john.trost@svn.com