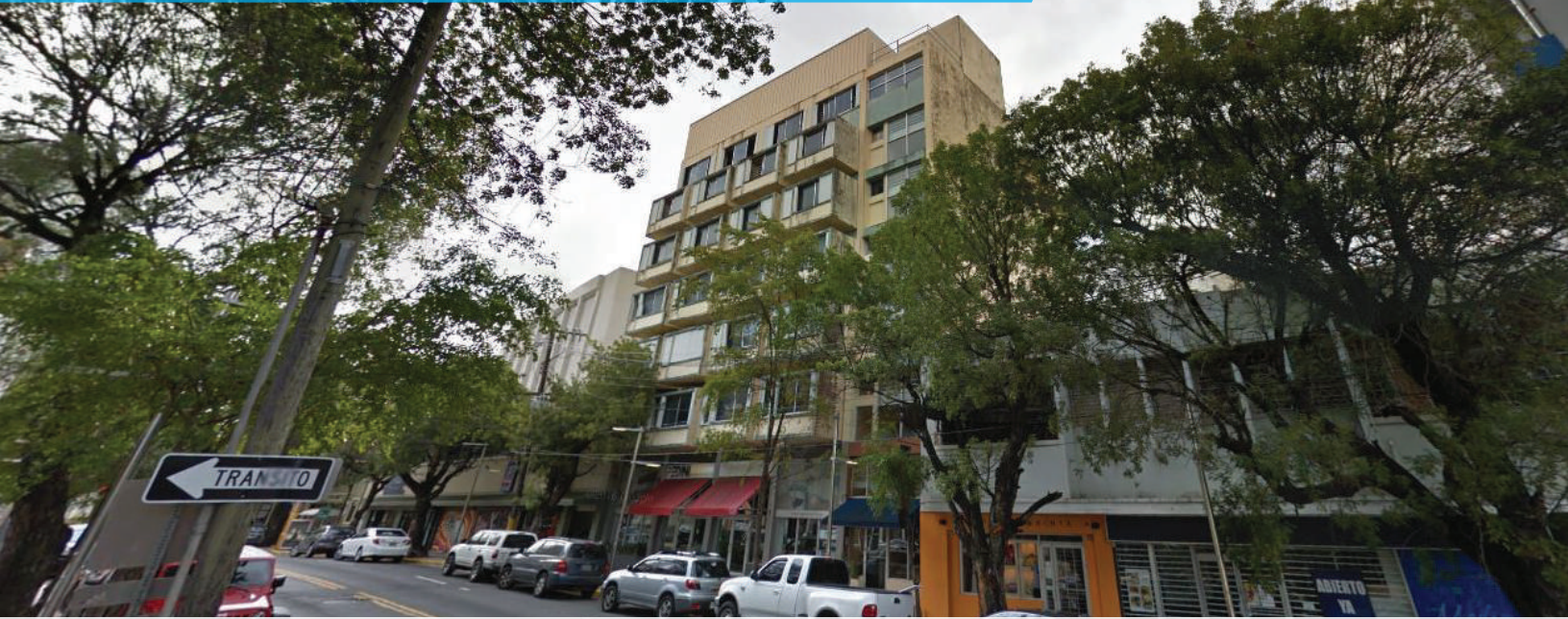




CHRISTIANSEN

COMMERCIAL REAL ESTATE

License 134



OFFICE CONDOMINIUM FOR LEASE/SALE

316 AVENIDA JOSÉ DE DIEGO SAN JUAN, PUERTO RICO

PROPERTY DETAILS

3,687 square feet of 2nd floor office available for sale or lease in the heart of Santurce.

Conveniently located on De Diego Avenue, next to Minillas Government Center and in front of the Art Museum of Puerto Rico. Close to many commercial, residential, retail, office and hotel amenities such as restaurants, cafes, cafeterias, supermarkets, gas stations, bank branches, government offices, schools, residential neighborhoods, condominiums and other related services. For lease, the space can be subdivided as follows:

Suite 1 - 748.57 square feet

Suite 2 - 899.85 square feet

Suite 3 - 1948.56 square feet

SITE AREA

3,687 square feet

CONNECTIVITY

Fiber infrastructure

SECURITY

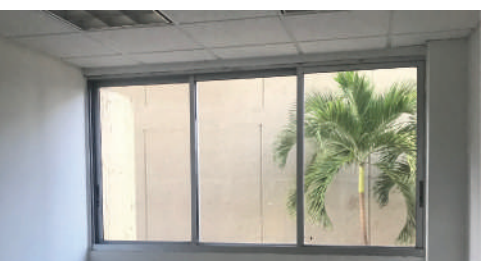
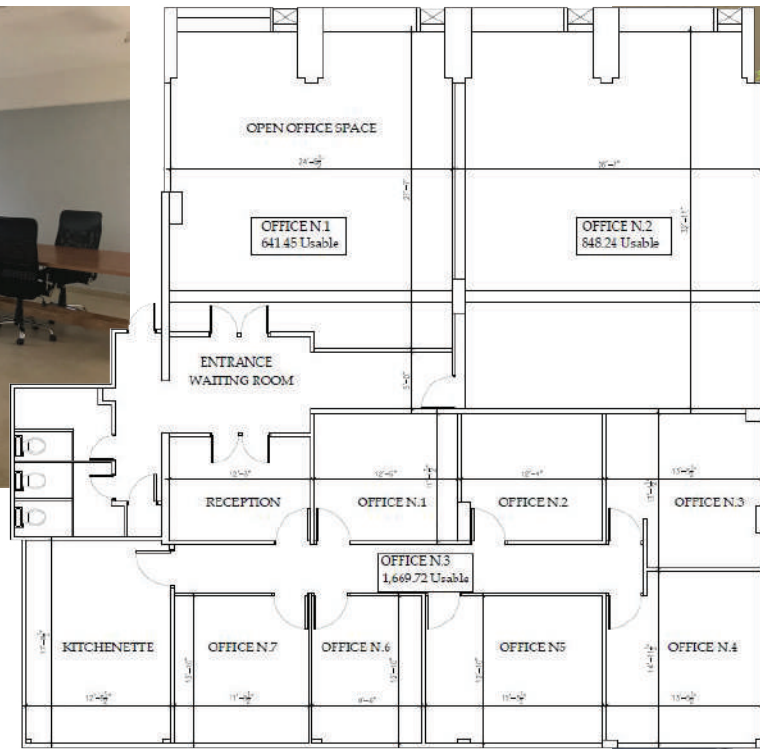
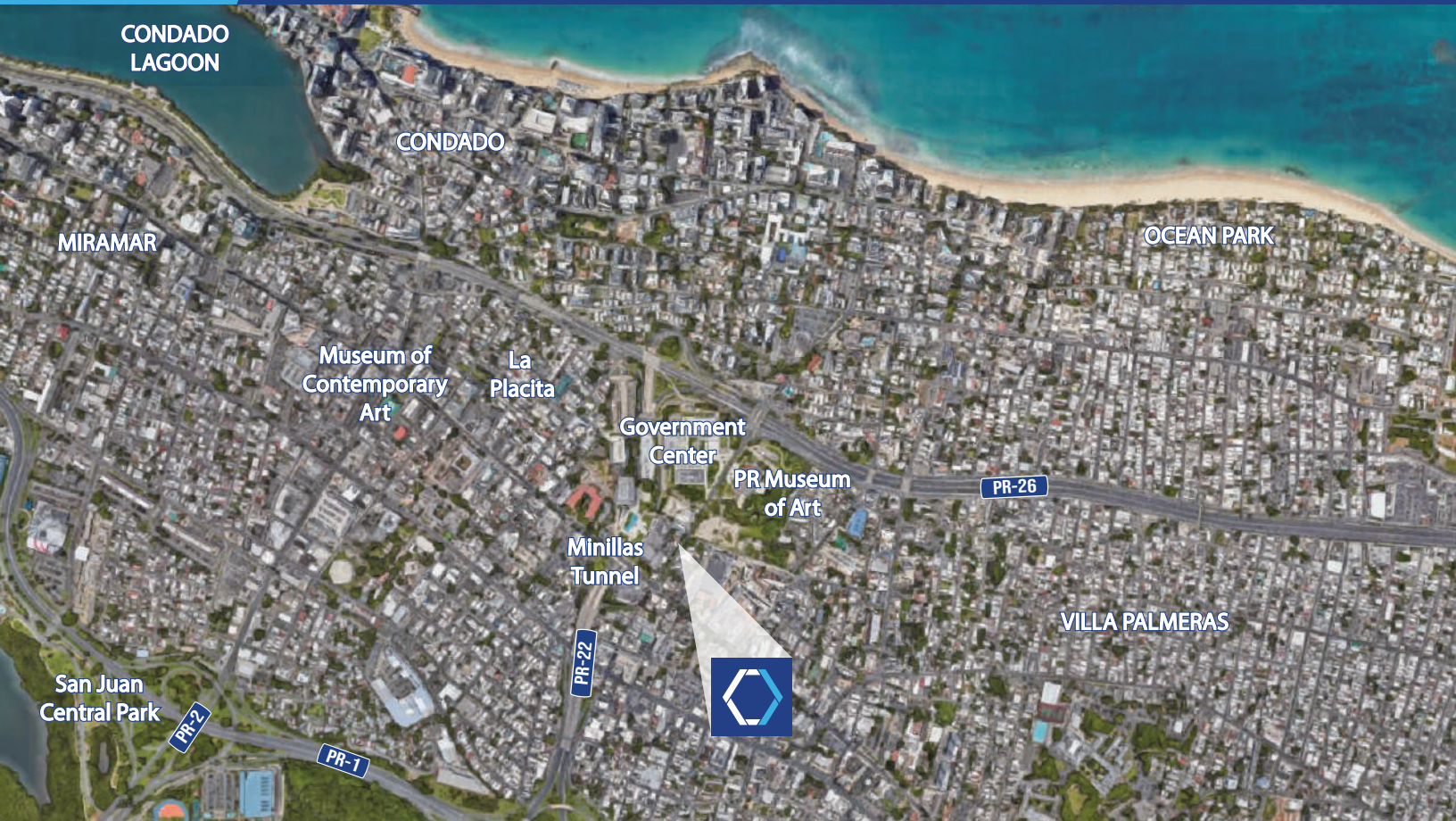
Access-controlled units

COMMON AREA FACTOR

For Rentals 1.167

FOR MORE INFORMATION VISIT WWW.CHRISTIANSENCOMMERCIAL.COM

316 AVENIDA JOSÉ DE DIEGO SAN JUAN, PUERTO RICO



American International Plaza
250 Muñoz Rivera Avenue Suite 350
Hato Rey, Puerto Rico 00918
www.christiansencommercial.com
787-778-7000



CAMERA SCAN FOR MORE DETAILS