



FMR RESTAURANT HATO REY SAN JUAN - FOR SALE/LEASE

AVENIDA PONCE DE LEON SAN JUAN, PR 00917

For More Information

MILTON COFRESI

787.778.7000

milton@christiansencommercial.com

RYAN CHRISTIANSEN, CCIM

787.778.7000

ryan@christiansencommercial.com

CHRISTIANSENCOMMERCIAL.COM

Property Summary



PROPERTY DESCRIPTION

Former Mona's restaurant, now an abandoned parcel, in the highly sought-after Hato Rey district available for sale or lease. Located in the corner of Guayama Street and Constitución Avenue, this commercial property boasts great visibility and accessibility, sitting in between the island's main financial district and the largest campus of the University of Puerto Rico, Rio Piedras. These attributes paired with access to a large employee and visitor base at nearby Auxilio Mutuo Hospital make this property ideal for a dual-pad and/or out parcel construction for drive-thru/franchise/convenience stores. Large concrete structure with parking facilities on premises.

OFFERING SUMMARY

Sale Price:	\$1,080,000
Lot Size:	0.494 Acres
Building Size:	4,000 SF
Lease Rate:	\$9,000 per month (MG)

For More Information

MILTON COFRESI

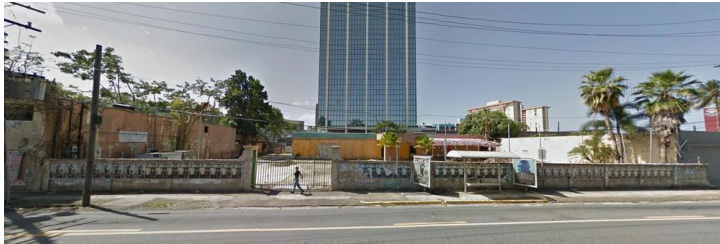
787.778.7000
milton@christiansencommercial.com

RYAN CHRISTIANSEN, CCIM

787.778.7000
ryan@christiansencommercial.com

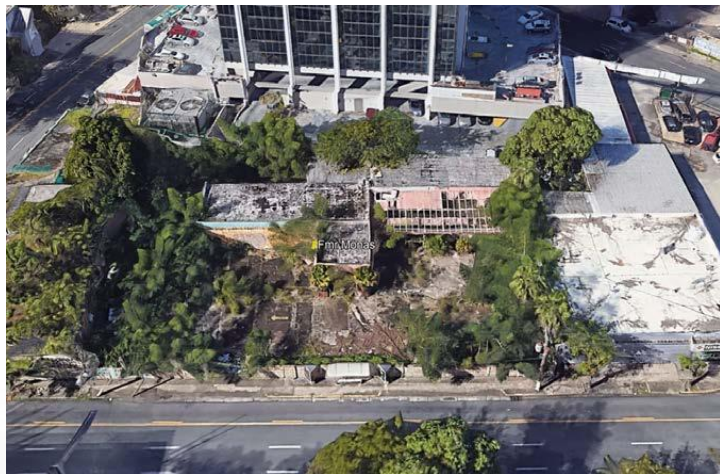
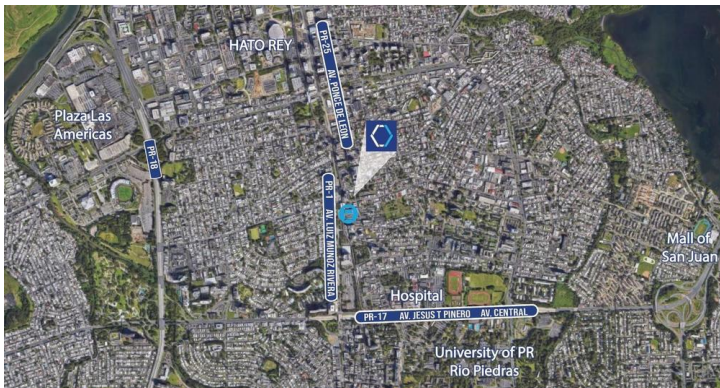
CHRISTIANSENCOMMERCIAL.COM

Complete Highlights



PROPERTY HIGHLIGHTS

- Property Tax ID: 063-062-250-12
- Zoning: Central Commercial (C-3)
- Flood: X (Non-floodable area)
- Coordinates: 18.41633640, -66.05572708
- Lot Size: 2,000 SM
- Bldg. Size: 4,000 SF



For More Information

MILTON COFRESI

787.778.7000

milton@christiansencommercial.com

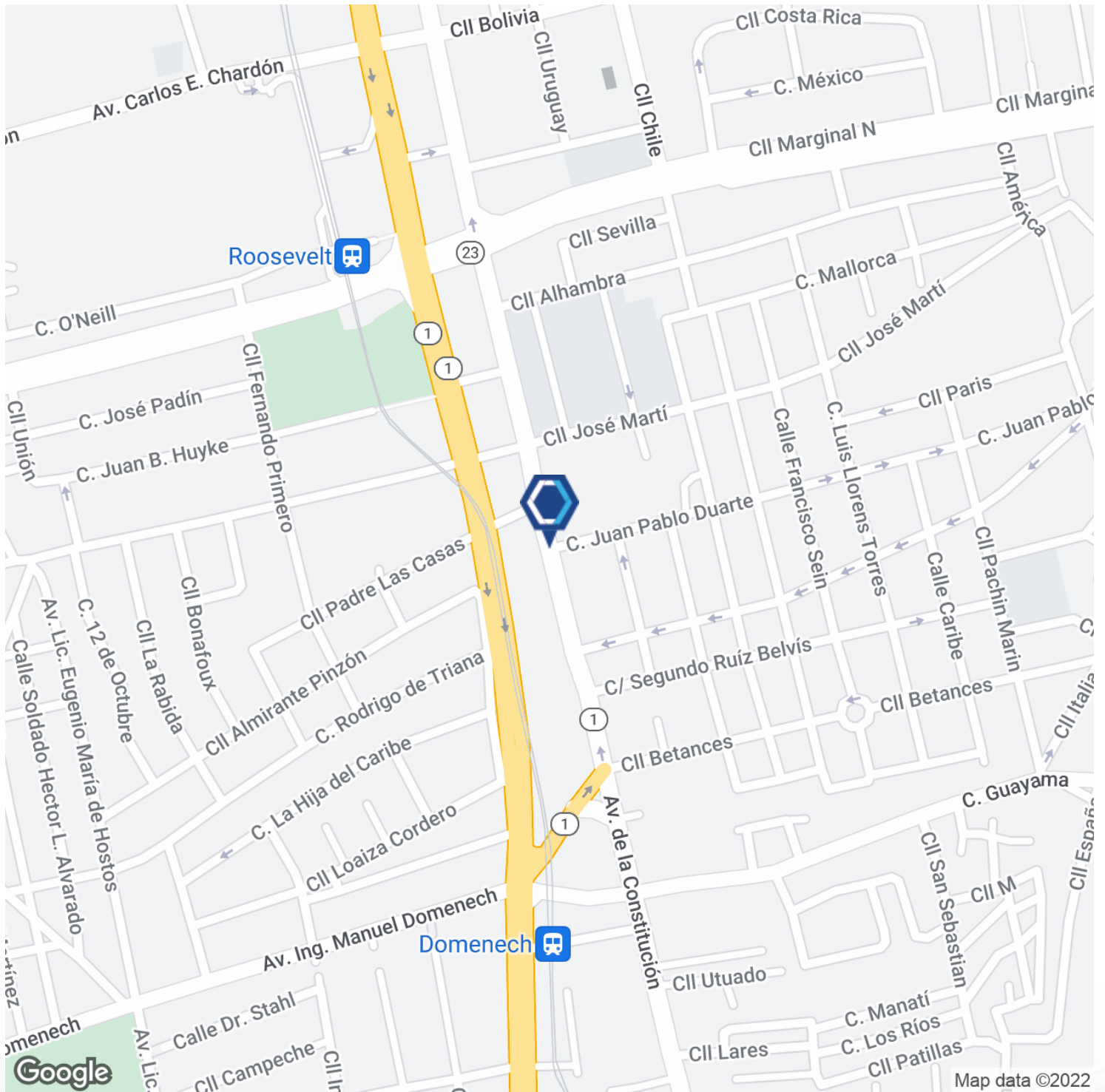
RYAN CHRISTIANSEN, CCIM

787.778.7000

ryan@christiansencommercial.com

CHRISTIANSENCOMMERCIAL.COM

Location Map



For More Information

MILTON COFRESI

787.778.7000

milton@christiansencommercial.com

RYAN CHRISTIANSEN, CCIM

787.778.7000

ryan@christiansencommercial.com

CHRISTIANSENCOMMERCIAL.COM