



JOHN STANLEY
&
ASSOCIATES

COMMERCIAL REAL ESTATE



**McQueen Smith Rd & U.S. Hwy 82
Prattville, AL 36066**

FOR SALE

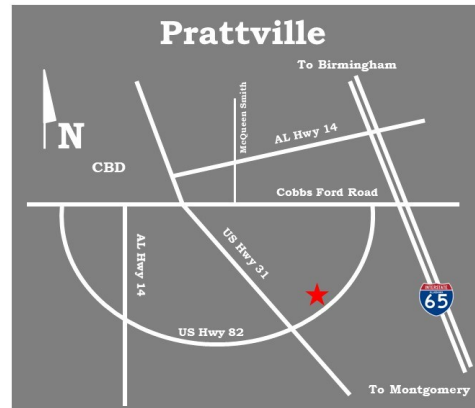
- **Sale Prices:** Lot 1 - \pm 1.67 Ac. @ \$12.00/S.F.
 \pm 14.65 Ac. @ \$4.00/S.F.
- **Zoning:** B-2 (Commercial)
- **Best Use:** Commercial/Retail
- **Visibility:** Excellent
- **Possession:** Immediate
- **Type Listing:** Exclusive

RETAIL PARCELS!

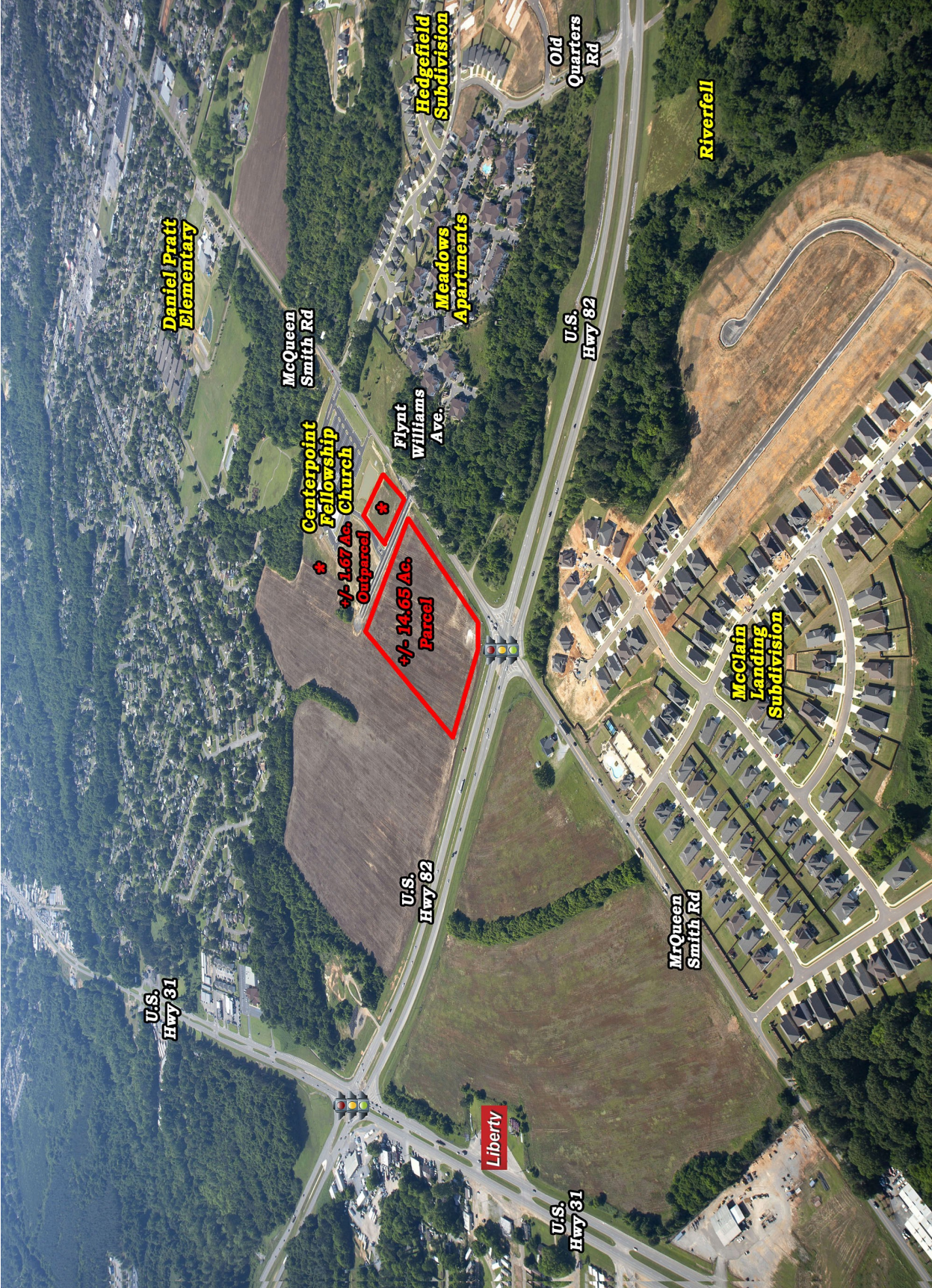
High visibility property at intersection of McQueen Smith Road & U.S. Hwy 82. \pm 1.67 Acre outparcel and \pm 14.65 Acre parcel. Traffic light at the intersection. Great location for retail, commercial or institutional use. Contact John Stanley, CCIM, for more information at (334) 271-2475.



John Stanley, CCIM
John Stanley & Associates, Inc.
4747 Woodmere Boulevard
Montgomery, AL 36106
(334) 271-2475 voice
(334) 271-2421 fax
jstanley@johnstanleyassociates.com
www.johnstanleyassociates.com



All information is from sources deemed reliable, but no warranty is made as to the accuracy thereof and same is submitted subject to errors, omissions, change of price, or other conditions, such as prior sales or withdrawal without notice by John Stanley & Associates, Inc. or the Owner.



Daniel Pratt Elementary

McQueen Smith Rd

Centerpoint Fellowship Church

+/- 1.67 Ac. Outparcel

+/- 14.65 Ac. Parcel

U.S. Hwy 82

U.S. Hwy 31

U.S. Hwy 82

Liberty

U.S. Hwy 31

Flynt Williams Ave.

Meadows Apartments

Hedgefield Subdivision

Old Quarters Rd

MrQueen Smith Rd

McClain Landing Subdivision

Riverfell

