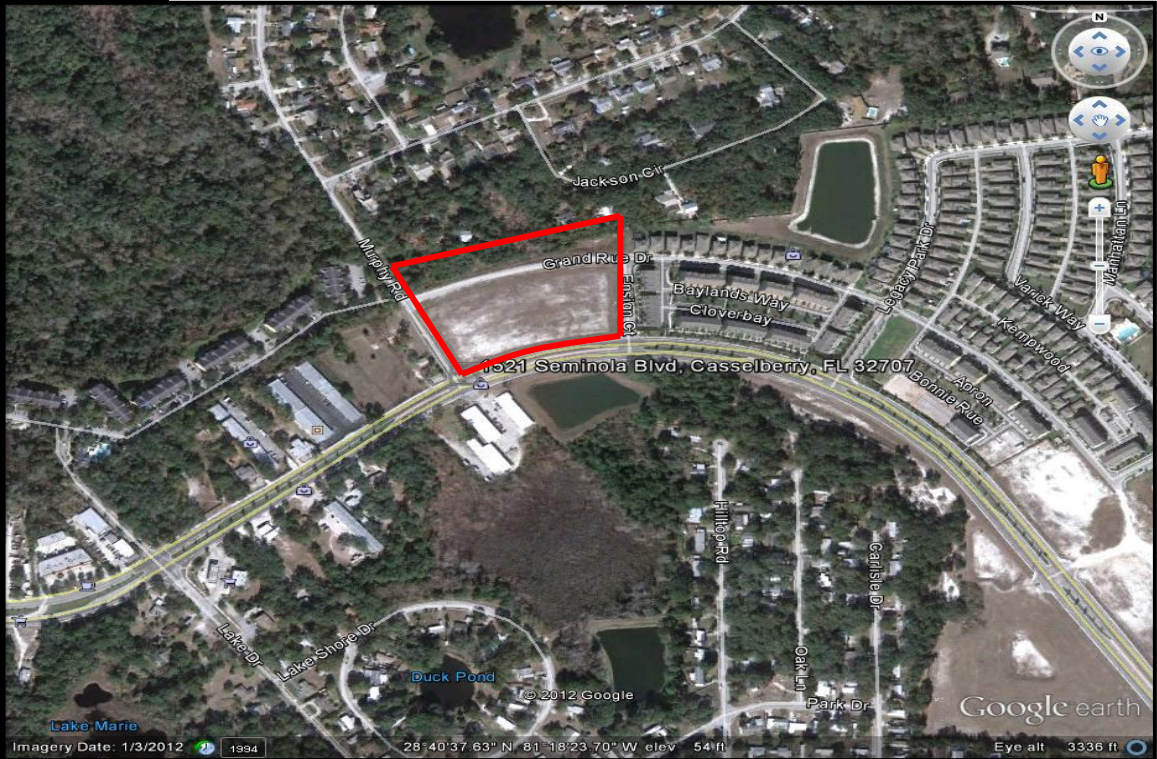


FOR SALE

MURPHY RD, SEMINOLA BLVD CASSELBERRY, FL 32707

7.5 ACRES OF COMMERCIAL LAND



PROPERTY HIGHLIGHTS

- 7.5 Acres of Land – *SHOVEL READY DEVELOPMENT*
- Adjacent to Legacy Park, Multi-Family Development
- Land is cleared
- City Water Line at property
- Sewer, storm line at property, no added retention needed
- PMXL Zoning City of Casselberry MIX USE
- Close to: SR 17-92, Connector to Tusawilla & Murphy Roads to Winter Springs
- Winter Springs neighborhood immediately behind site
- Access Road, Grand Rue Dr, connects Murphy to Legacy Pk Development across site, ready for “Dedication” to the City
- Asking: \$1,875,000 (\$250,000 per acre)

CONTACT

Scott Garrett
407.733.8159 *mobile*
Scott@ResultsREPartners.com

Results Real Estate Partners, LLC
Licensed Real Estate Brokers
108 Commerce Street, Suite 200
Lake Mary, Florida 32746

407.647.0200 *main*
407.647.0205 *fax*

www.ResultsREPartners.com

This information is from sources we deem reliable and is subject to prior sale, lease, withdrawal without notice, or change in prices, rates, or conditions. No representation is made as to the accuracy of any information furnished.

FOR SALE

CONTACT

Scott Garrett
407.733.8159 *mobile*
Scott@ResultsREPartners.com

MURPHY RD, SEMINOLA BLVD CASSELBERRY, FL 32707

7.5 ACRES OF COMMERCIAL LAND



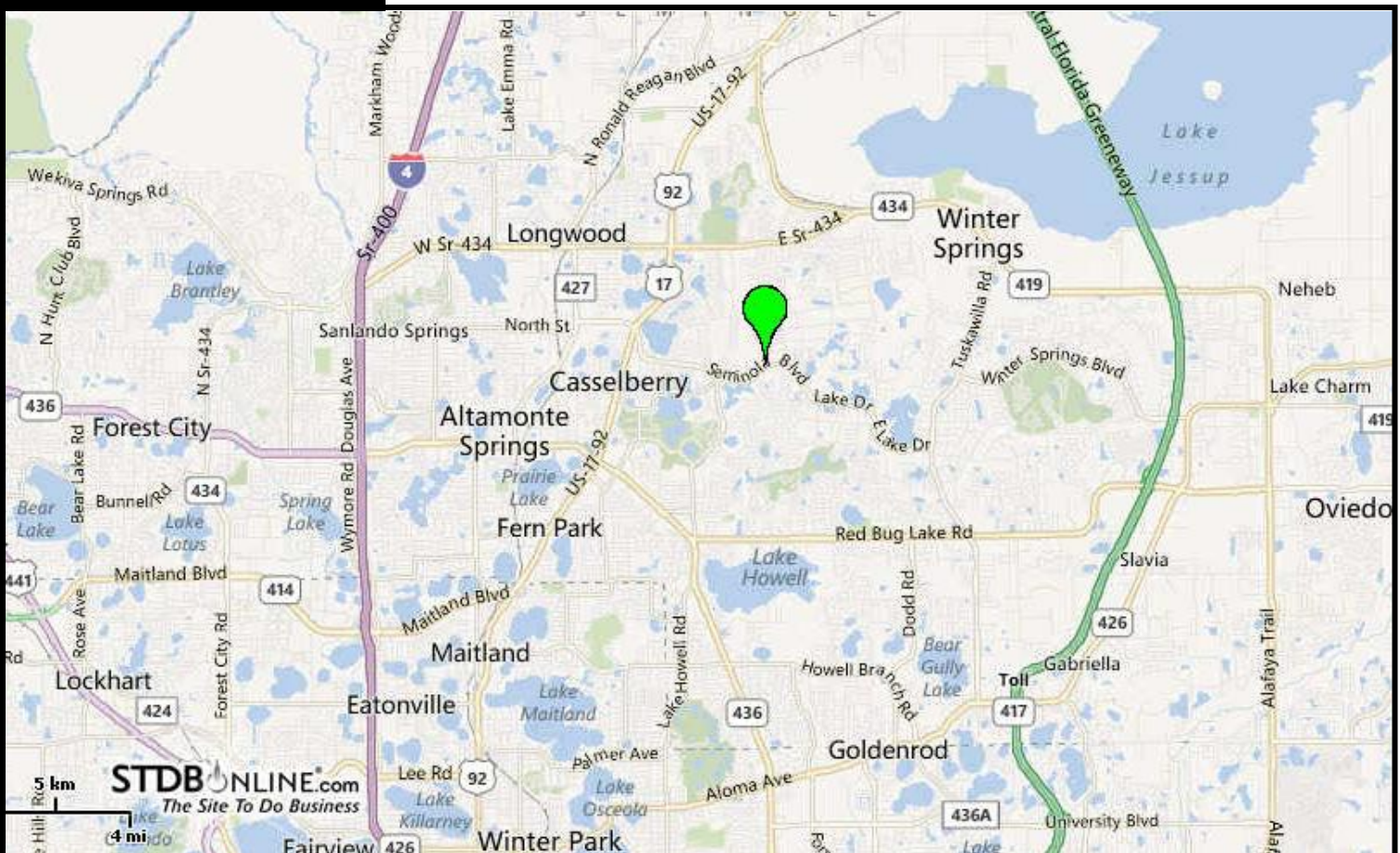
TRAFFIC COUNTS

Seminola & Lake Dr 14,677

POPULATION & INCOME

	<u>1 mile</u>	<u>3 mile</u>	<u>5 mile</u>
Population:	8,653	76,408	183,888
Households:	3,158	30,617	74,545
Avg Household Income:	\$58,918	\$67,066	\$72,980

MAP OVERVIEW



This information is from sources we deem reliable and is subject to prior sale, lease, withdrawal without notice, or change in prices, rates, or conditions. No representation is made as to the accuracy of any information furnished.

FOR SALE

MURPHY RD, SEMINOLA BLVD CASSELBERRY, FL 32707

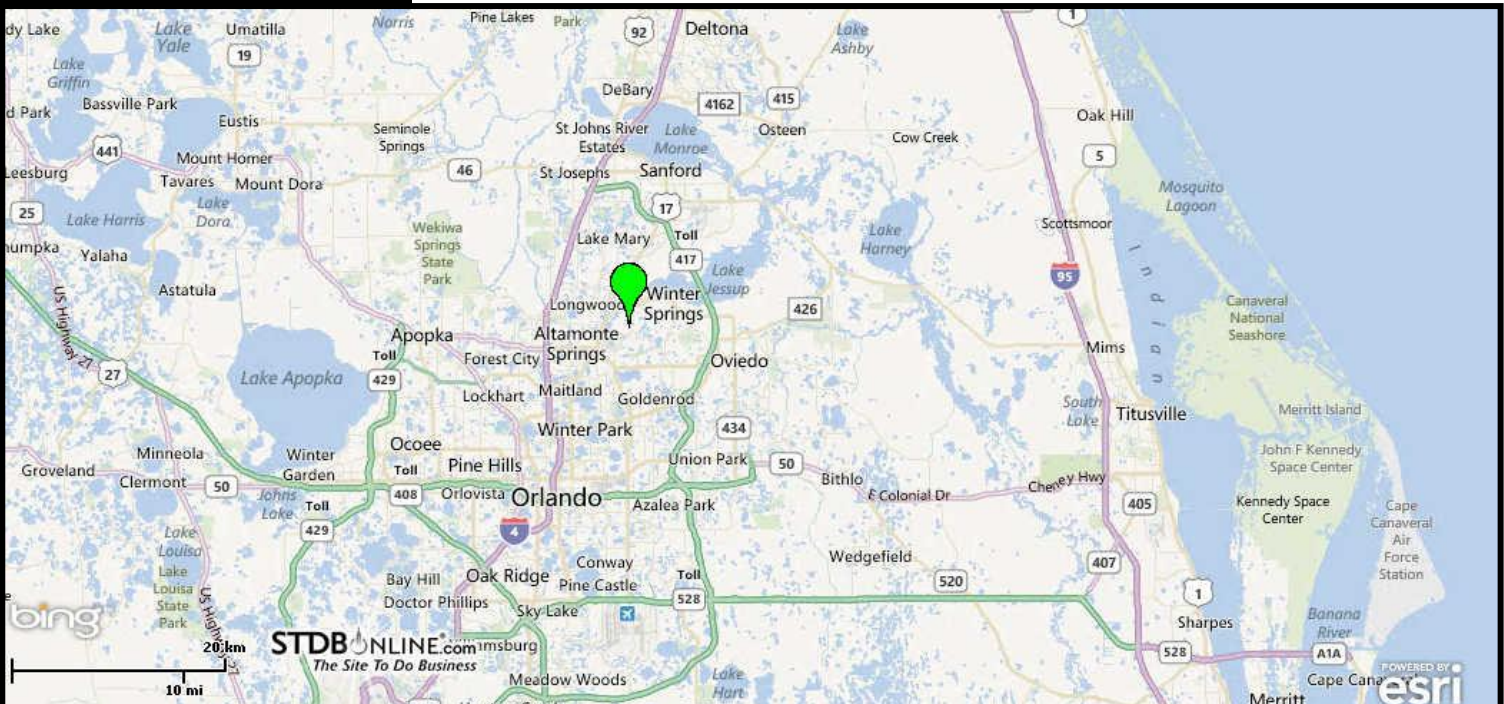
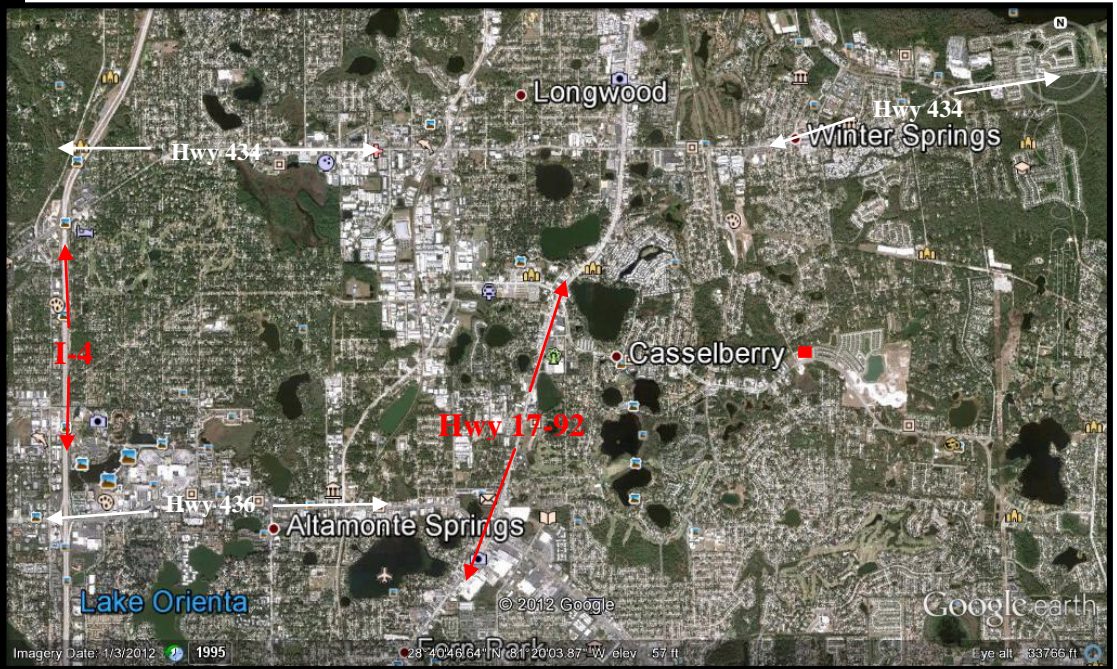
7.5 ACRES OF COMMERCIAL LAND



RESULTS
REAL ESTATE PARTNERS, LLC

CONTACT

Scott Garrett
407.733.8159 *mobile*
Scott@ResultsREPartners.com



Results Real Estate Partners, LLC
Licensed Real Estate Brokers
108 Commerce Street, Suite 200
Lake Mary, Florida 32746

407.647.0200 *main*
407.647.0205 *fax*

www.ResultsREPartners.com

This information is from sources we deem reliable and is subject to prior sale, lease, withdrawal without notice, or change in prices, rates, or conditions. No representation is made as to the accuracy of any information furnished.

FOR SALE

MURPHY RD, SEMINOLA BLVD CASSELBERRY, FL 32707

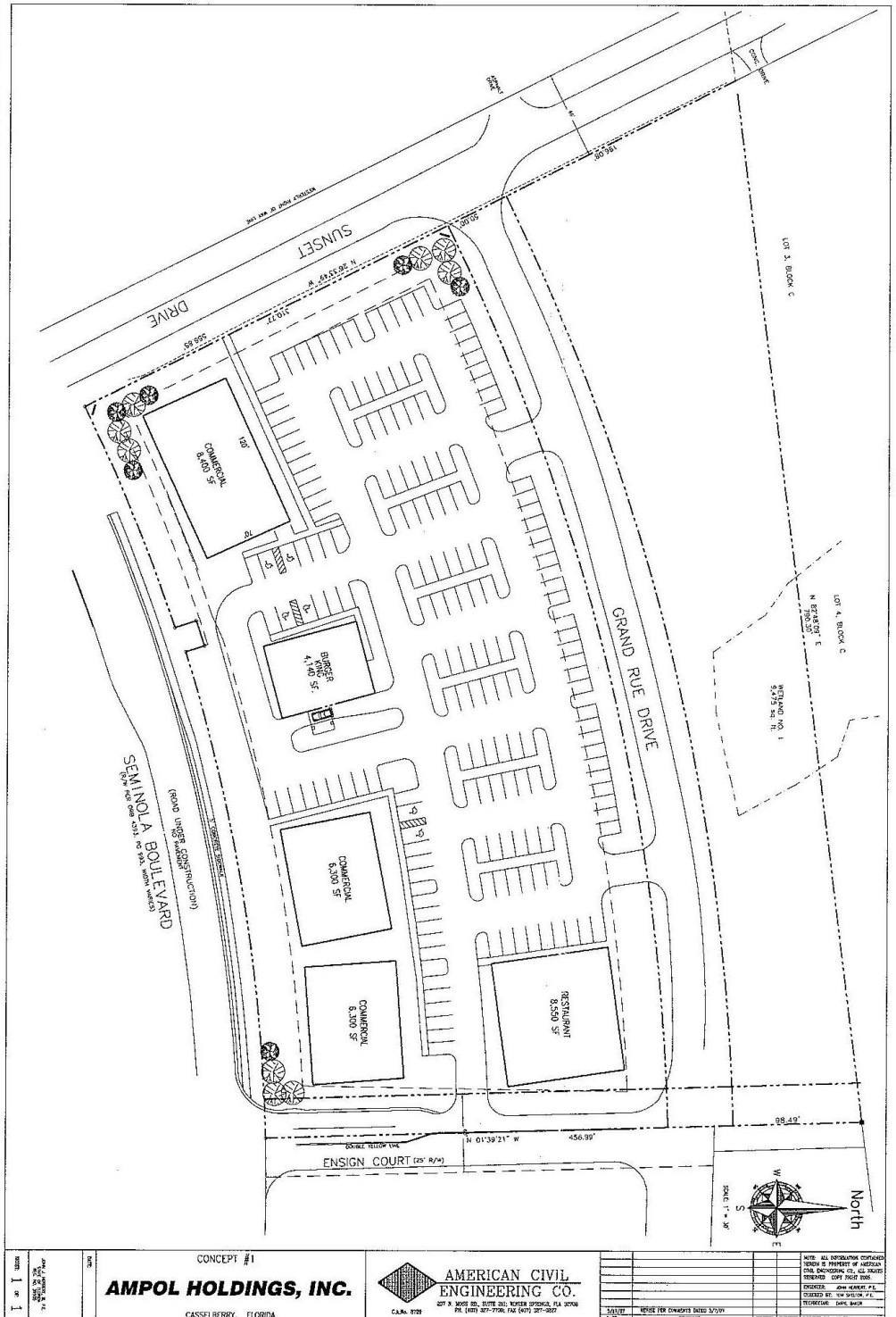


7.5 ACRES OF COMMERCIAL LAND

CONCEPT DRAWING, MULTI UNIT FAST FOOD

CONTACT

Scott Garrett
407.733.8159 mobile
Scott@ResultsREPartners.com



Results Real Estate Partners, LLC
Licensed Real Estate Brokers
108 Commerce Street, Suite 200
Lake Mary, Florida 32746

407.647.0200 main
407.647.0205 fax

www.ResultsREPartners.com

This information is from sources we deem reliable and is subject to prior sale, lease, withdrawal without notice, or change in prices, rates, or conditions. No representation is made as to the accuracy of any information furnished.

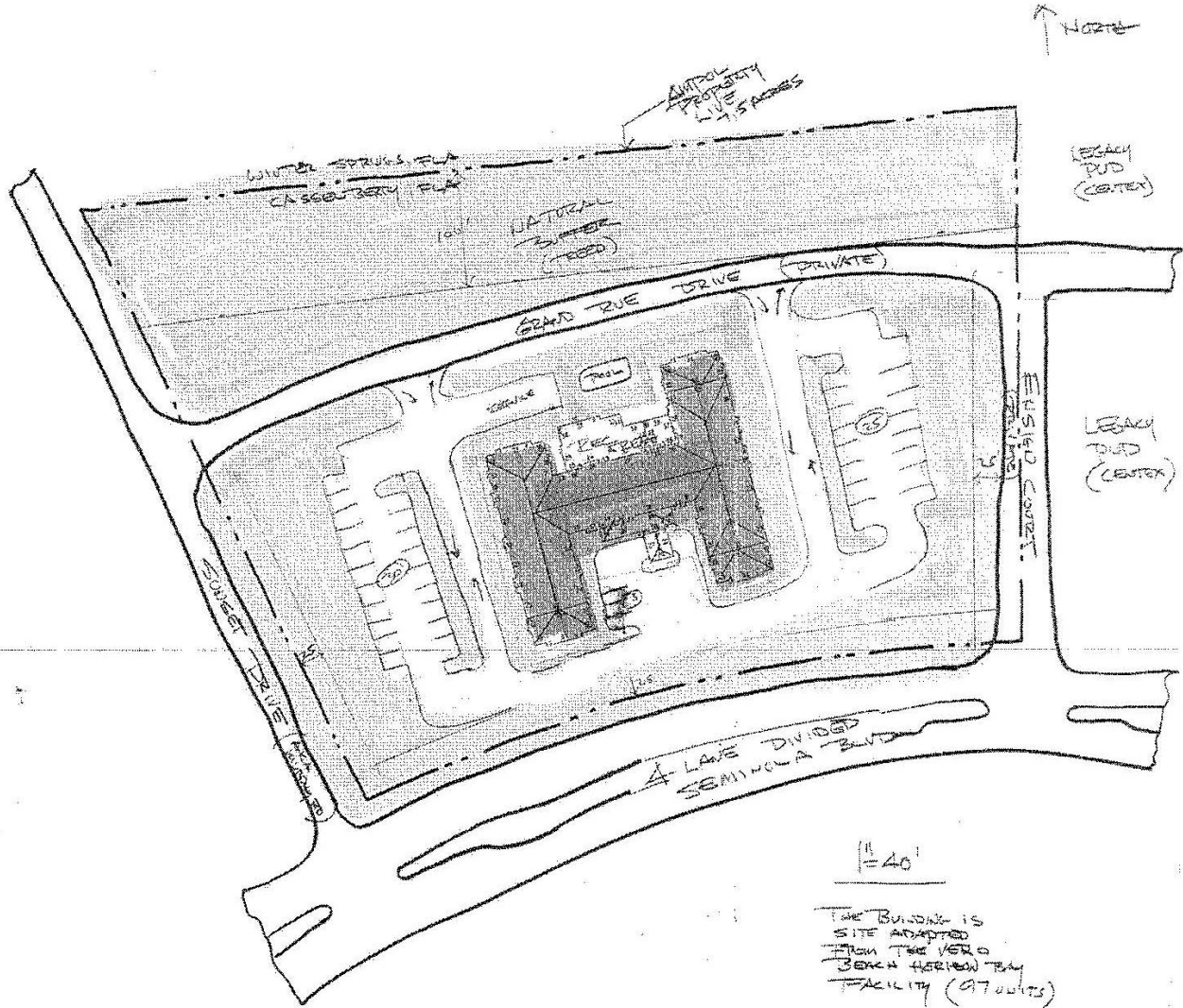
**FOR
SALE**

**MURPHY RD, SEMINOLA BLVD
CASSELBERRY, FL 32707**



7.5 ACRES OF COMMERCIAL LAND

CONCEPT DRAWING, ASSISTED LIVING FACILITY



Results Real Estate Partners, LLC
Licensed Real Estate Brokers
108 Commerce Street, Suite 200
Lake Mary, Florida 32746

407.647.0200 *main*
407.647.0205 *fax*

www.ResultsREPartners.com

This information is from sources we deem reliable and is subject to prior sale, lease, withdrawal without notice, or change in prices, rates, or conditions. No representation is made as to the accuracy of any information furnished.