

5409 PROVOST DRIVE, HOLIDAY, FL 34690



Zoned C2

WAREHOUSE FOR SALE

Offered at: \$2,000,000

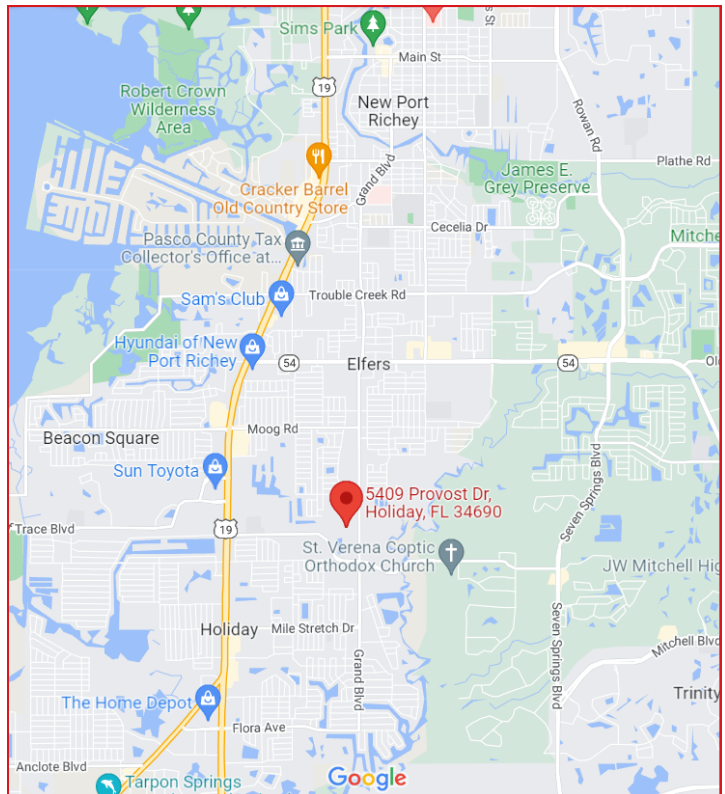
- Location:** Off of Grand Blvd. on Provost Dr. in Holiday
- Property Highlights:**
- Currently a Towing/Auto Repair Use
 - 1.32 Acres
 - 4,440 square feet, includes office/two restrooms
 - Large Parking area in the front and back of the building, fenced around the perimeter.

FOR MORE INFORMATION

Jeff Grey
727-481-4562
Jeff@figrey.com

Chuck Grey
727-849-2424
Chuck@figrey.com

Bob Upton
727-214-7764
Robertwupton@figrey.com



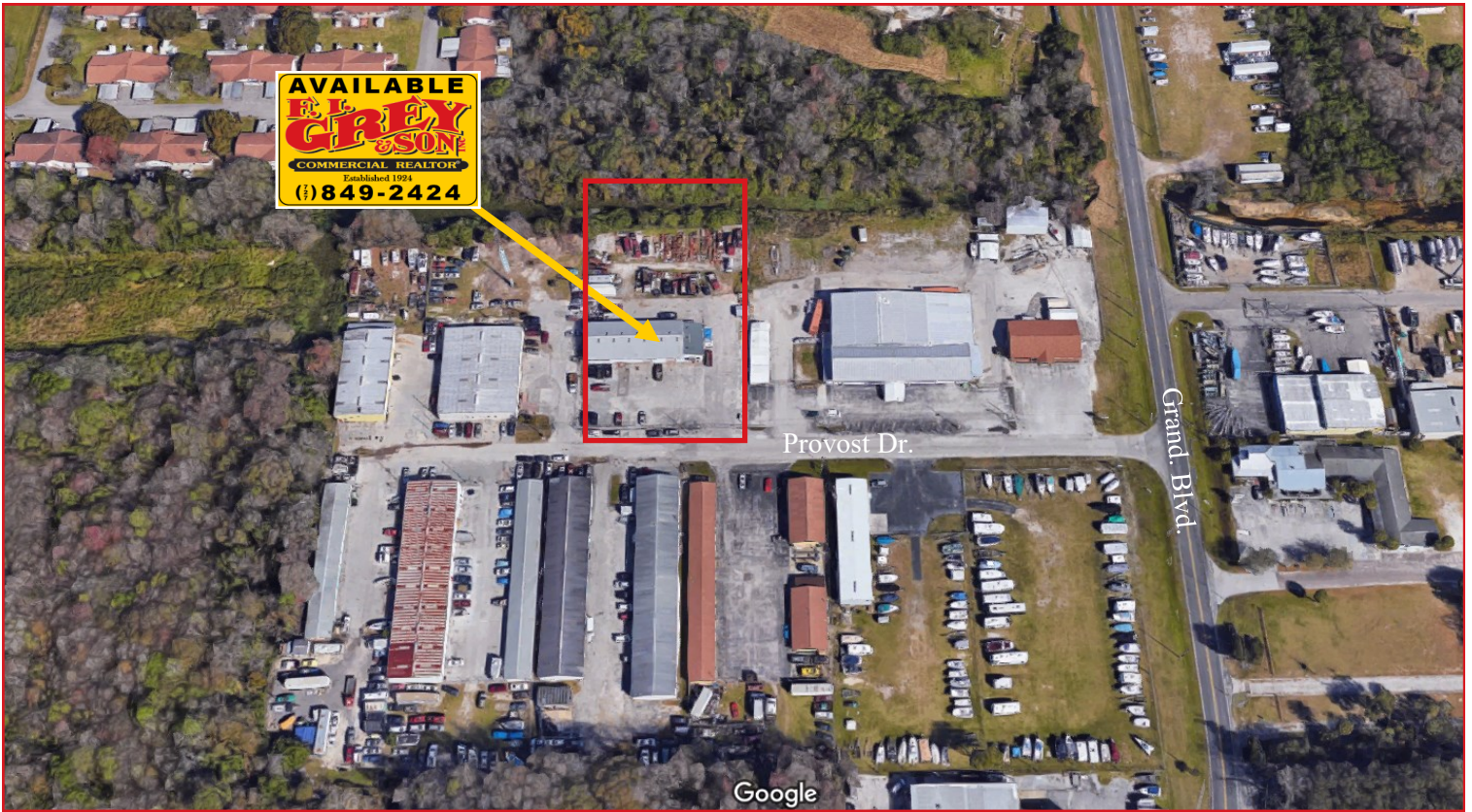
The information given herewith is obtained from sources we consider reliable. We are not responsible for misstatements of facts, errors, omissions, changes in terms or conditions, or withdrawal from the market without prior notice.



5636 Grand Blvd., Suite A
New Port Richey, FL 34652
727.849.2424
www.figrey.com

Established in 1924
Serving Florida for over 98 years!

5409 PROVOST DRIVE, HOLIDAY, FL 34690



Demographics			
	Radius		
	1-Mile	3-Miles	5-Miles
Population:	10,208	82,478	152,969
Households:	4,243	35,016	66,520
Average HH Income:	\$63,494	\$67,846	\$77,869
Traffic Counts: (FDOT)	15,000 AADT on Grand Blvd.		

PROPERTY STATISTICS	
Building	
Size	4,440 sf
Use	Warehouse
Site	
Size	1.32 acres
Zoning	C2
Taxes (2021)	\$4,614.91

FOR MORE INFORMATION

Jeff Grey
727-481-4562
Jeff@figrey.com

Chuck Grey
727-849-2424
Chuck@figrey.com

Bob Upton
727-214-7764
Robertwupton@figrey.com



P. 727.849.2424 | F. 727.842.6596

5636 Grand Blvd., Suite A, New Port Richey, FL 34652
www.figrey.com | www.Facebook.com/figreycommercial