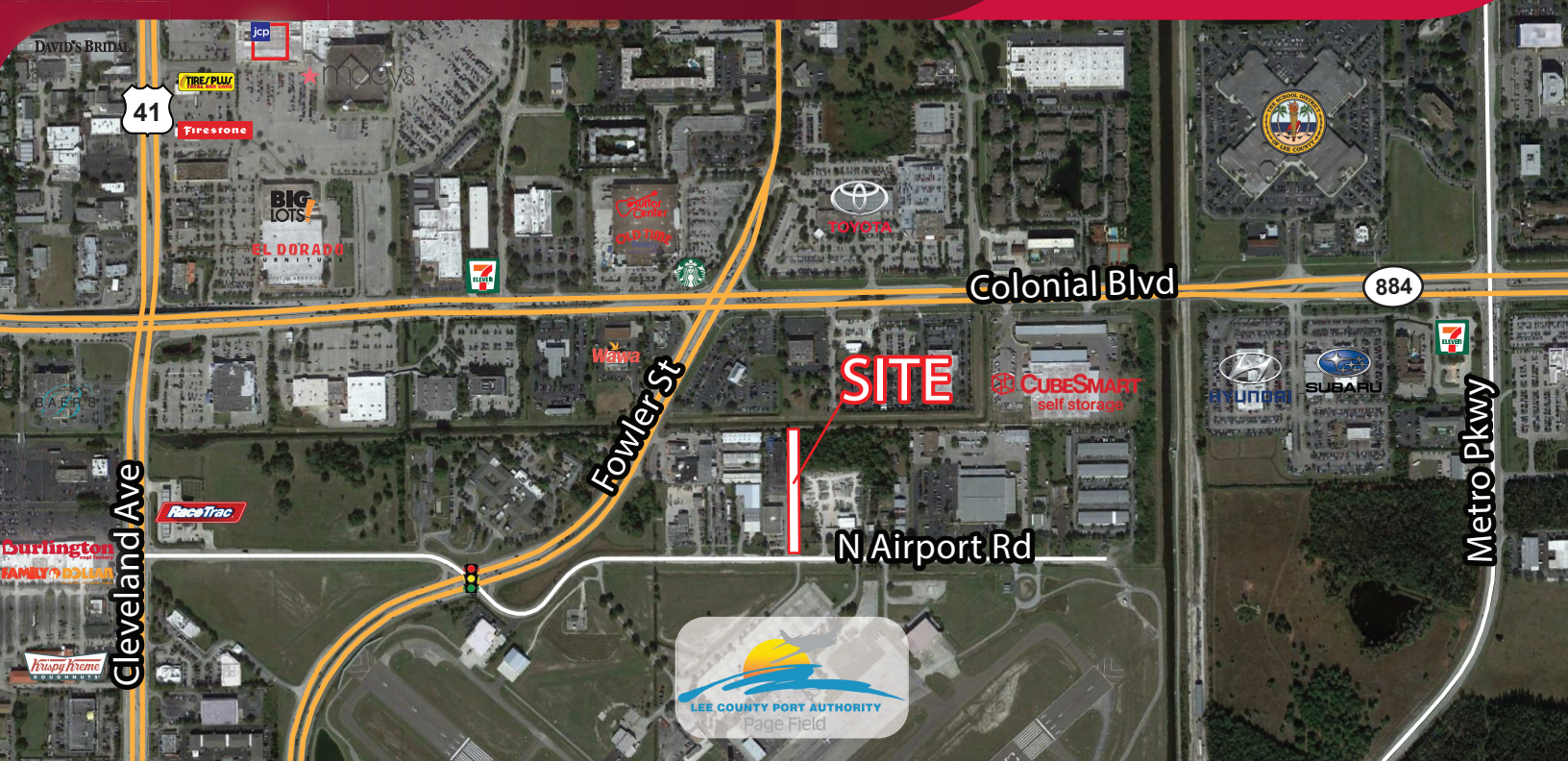


# LAND FOR SALE

0.66 AC LAYDOWN YARD

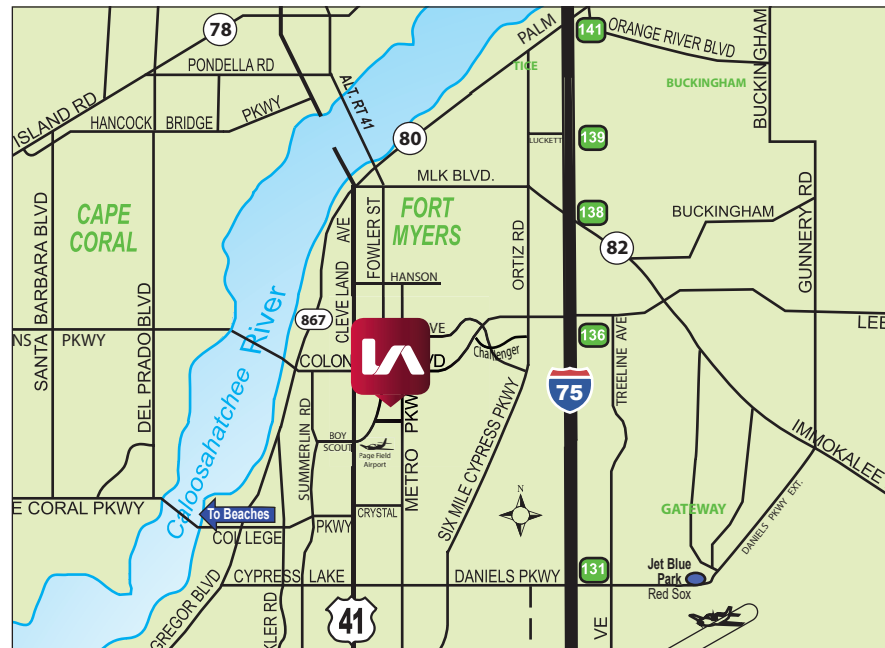
2505 N AIRPORT ROAD, FORT MYERS, FL 33907



- **LAND SIZE:** 0.66 AC (28,750 SF)
- **SALE PRICE:** \$450,000

## PROPERTY FEATURES

- 0.66 AC of Industrial Land Ideal for a Laydown Yard
- Two Existing Improvements On-Site include a 360 SF Office Building & a 288 SF Service Garage
- Located Adjacent to Page Field Airport in the South Fort Myers Submarket
- Zoned IL - City of Fort Myers (click [here](#) for uses)



Please Contact:  
**The Industrial Team**

**Adam Bornhorst**  
Senior Associate

239.210.7616

✉ abornhorst@lee-associates.com

All information furnished regarding property for sale, rental or financing is from sources deemed reliable, but no warranty or representation is made to the accuracy thereof and same is subject to errors, omissions, change of price, or other conditions prior to sale, lease or financing or withdrawal without notice. No liability of any kind is to be imposed on the broker herein.

YOUR LOCAL MARKET EXPERT

11215 Metro Parkway, Suite 1 | Fort Myers, Florida 33966 | Lee-FL.com



# LAND FOR SALE

0.66 AC LAYDOWN YARD

2505 N AIRPORT ROAD, FORT MYERS, FL 33907



YOUR LOCAL MARKET **EXPERT**

11215 Metro Parkway, Suite 1 | Fort Myers, Florida 33966 | Lee-FL.com

# LAND FOR SALE

0.66 AC LAYDOWN YARD

2505 N AIRPORT ROAD, FORT MYERS, FL 33907



YOUR LOCAL MARKET **EXPERT**

11215 Metro Parkway, Suite 1 | Fort Myers, Florida 33966 | Lee-FL.com

