



---

OFFICE BUILDING FOR LEASE

---

# Office Space Available

1250 E Andrews Ave Starke, FL 32091

UP TO +/- 2,860 SF OF OFFICE SPACE

presented by:

**BRIAN L. LIGHTLE, CCIM, SIOR, CRE**

Founder | Principal | Broker Associate

321.722.0707 X14

brian@teamlbr.com

# EXECUTIVE SUMMARY

• 1250 E Andrews Ave Starke, FL 32091



## OFFERING SUMMARY

**Available SF:** 2,860 SF

**Lease Rate:** \$16.00 SF/yr (Gross)

**Year Built:** 1984

**Building Size:** 13,020 SF

## PROPERTY OVERVIEW

+/- 2860 SF of Office Space Available  
Full Service Including Electrical and Janitorial  
Hard-walled Offices  
Large Training Room  
Conference Room  
Restroom with Shower  
Kitchenette  
Ample Parking

## LOCATION OVERVIEW

Located Next to Division of Children and Families  
Adjacent to Suwannee River Economic Council  
Positioned Just Off of SR 301  
Starke is approximately 50 miles southwest of Jacksonville, approximately 30 miles northeast of Gainesville, and about 40 miles southeast of Lake City.

### BRIAN L. LIGHTLE, CCIM, SIOR, CRE

Founder | Principal I Broker Associate  
321.722.0707 X14  
brian@teamlbr.com

### Lightle Beckner Robison, Inc.

321.722.0707 • teamlbr.com  
70 W. Hibiscus Blvd.,  
Melbourne, FL 32901

Information contained herein has been obtained through sources deemed reliable but cannot be guaranteed as to its accuracy. A purchaser or lessee is expected to verify all information to his/her own satisfaction. Zoning information subject to change and not warranted. Always confirm current requirements with local governing agencies.

# ADDITIONAL PHOTOS

• 1250 E Andrews Ave Starke, FL 32091



## **BRIAN L. LIGHTLE, CCIM, SIOR, CRE**

Founder | Principal | Broker Associate  
321.722.0707 X14  
brian@teamlbr.com

## **Lightle Beckner Robison, Inc.**

321.722.0707 • teamlbr.com  
70 W. Hibiscus Blvd.,  
Melbourne, FL 32901

Information contained herein has been obtained through sources deemed reliable but cannot be guaranteed as to its accuracy. A purchaser or lessee is expected to verify all information to his/her own satisfaction. Zoning information subject to change and not warranted. Always confirm current requirements with local governing agencies.

# ADDITIONAL PHOTOS

• 1250 E Andrews Ave Starke, FL 32091



**BRIAN L. LIGHTLE, CCIM, SIOR, CRE**

Founder | Principal | Broker Associate  
321.722.0707 X14  
brian@teamlbr.com

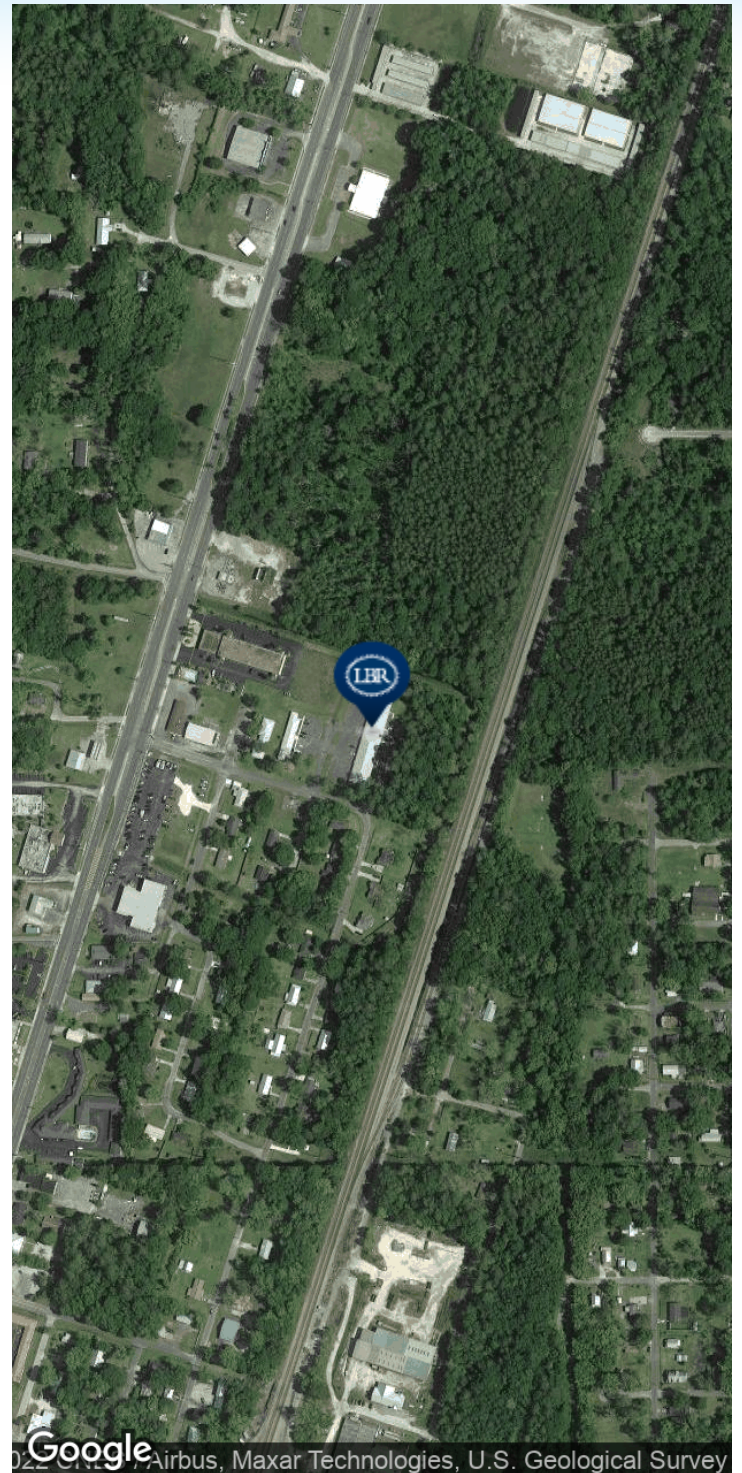
**Lightle Beckner Robison, Inc.**

321.722.0707 • teamlbr.com  
70 W. Hibiscus Blvd.,  
Melbourne, FL 32901

Information contained herein has been obtained through sources deemed reliable but cannot be guaranteed as to its accuracy. A purchaser or lessee is expected to verify all information to his/her own satisfaction. Zoning information subject to change and not warranted. Always confirm current requirements with local governing agencies.

# LOCATION MAP

• 1250 E Andrews Ave Starke, FL 32091



## BRIAN L. LIGHTLE, CCIM, SIOR, CRE

Founder | Principal | Broker Associate  
321.722.0707 X14  
brian@teamlbr.com

## Lightle Beckner Robison, Inc.

321.722.0707 • teamlbr.com  
70 W. Hibiscus Blvd.,  
Melbourne, FL 32901

Information contained herein has been obtained through sources deemed reliable but cannot be guaranteed as to its accuracy. A purchaser or lessee is expected to verify all information to his/her own satisfaction. Zoning information subject to change and not warranted. Always confirm current requirements with local governing agencies.