

OFFICE-FLEX-MANUFACTURING SPACE FOR LEASE

# CORAL SPRINGS CORPORATE PARK

11950 NW 39th Street, Suites A, B, C/D & E

CORAL SPRINGS, FLORIDA 33065



## PROPERTY HIGHLIGHTS:

- **Four spaces (whole building) can be combined for a total of ±18,425 SF:**
  - Suite A: ±6,343 SF Warehouse/Office
  - Suite B: ±3,739 SF Flex
  - Suite C/D: ±6,216 SF Manufacturing
  - Suite E: ±2,127 SF Office
- Restrooms in all spaces
- 100% HVAC
- Zoned: IRD, City of Coral Springs
- Minutes from Sawgrass Expy. (FL SR 869)

## CONTACT:

**Franklin B. Morrison, Principal**

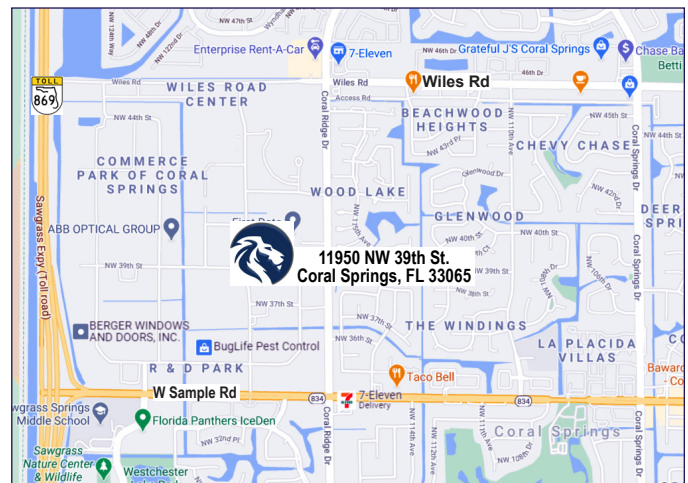
**954 801 0830**

[frank@weavermorrison.com](mailto:frank@weavermorrison.com)

Lease Rate:

**\$10.00-11.00** psf NNN

(depending on size - Call Broker)



**WEAVER • MORRISON**



COMMERCIAL REAL ESTATE

**WEAVER • MORRISON COMMERCIAL REAL ESTATE**

2972 NW 60th Street • Fort Lauderdale, FL 33309

954 686 9300 [www.weavermorrison.com](http://www.weavermorrison.com)

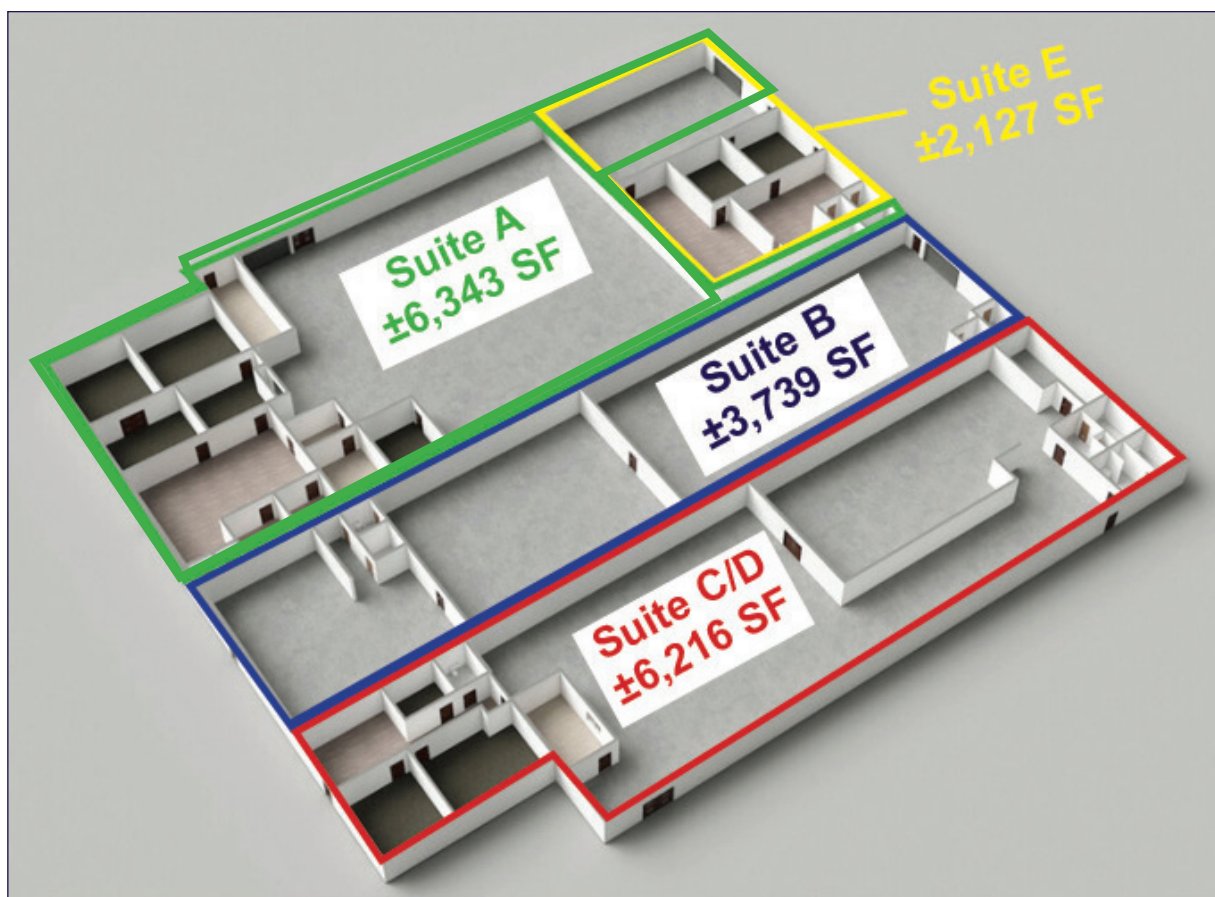
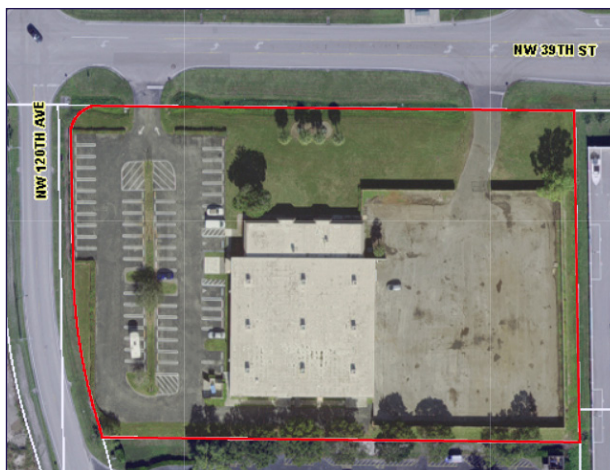
NO WARRANTY OR REPRESENTATION, EXPRESS OR IMPLIED, IS MADE AS TO THE ACCURACY OF THE INFORMATION CONTAINED HEREIN, AND THE SAME IS SUBMITTED SUBJECT TO ERRORS, OMISSIONS, CHANGE OF PRICE, RENTAL OR OTHER CONDITIONS, PRIOR SALE, LEASE OR FINANCING, OR WITHDRAWAL WITHOUT NOTICE, AND OF ANY SPECIAL LISTING CONDITIONS IMPOSED BY OUR PRINCIPALS NO WARRANTIES OR REPRESENTATIONS ARE MADE AS TO THE CONDITION OF THE PROPERTY OR ANY HAZARDS CONTAINED THEREIN ARE ANY TO BE IMPLIED.

OFFICE-FLEX-MANUFACTURING SPACE FOR LEASE

# CORAL SPRINGS CORPORATE PARK

11950 NW 39th Street, Suites A, B, C/D & E

CORAL SPRINGS, FLORIDA 33065



WEAVER • MORRISON



COMMERCIAL REAL ESTATE

Franklin B. Morrison, Principal

954 801 0830

frank@weavermorrison.com