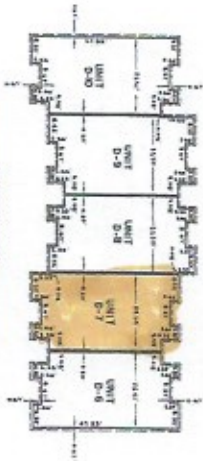
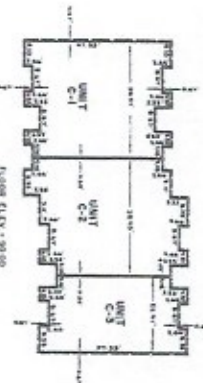


MATTLAND SQUARE

A CONDOMINIUM



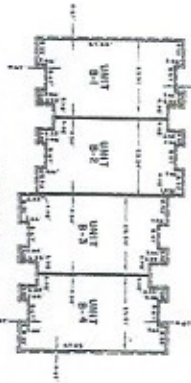
SECOND FLOOR PLAN BUILDING "B"



FLOOR PLAN BUILDING "C"



FIRST FLOOR PLAN BUILDING "B"



FLOOR PLAN BUILDING "B"



FLOOR PLAN BUILDING "X"

HENRICH, INC.
SURVEYING AND MAPPING
250 WYOMING ROAD
WHITE PLAIN, GEORGIA 30186
202-641-7285

THE UNDERSIGNED HAS A VISUAL AND MEASURED LAND SURVEY OF MATTLAND SQUARE CONDOMINIUM, INCORPORATED 1993, WHICH IS BEING OFFERED TO THE PUBLIC BY THE STATE OF GEORGIA. THE UNDERSIGNED HAS CONDUCTED A VISUAL AND MEASURED LAND SURVEY OF THE CONDOMINIUM AND HAS FOUND THAT THE CONDOMINIUM IS BEING OFFERED TO THE PUBLIC IN ACCORDANCE WITH THE REQUIREMENTS OF THE CONDOMINIUM ACT, CHAPTER 136, OF THE GEORGIA CONSTITUTION AND THE CONDOMINIUM ACT, CHAPTER 136, OF THE GEORGIA CONSTITUTION. THE UNDERSIGNED HAS FOUND THAT THE CONDOMINIUM IS BEING OFFERED TO THE PUBLIC IN ACCORDANCE WITH THE REQUIREMENTS OF THE CONDOMINIUM ACT, CHAPTER 136, OF THE GEORGIA CONSTITUTION AND THE CONDOMINIUM ACT, CHAPTER 136, OF THE GEORGIA CONSTITUTION. THE UNDERSIGNED HAS FOUND THAT THE CONDOMINIUM IS BEING OFFERED TO THE PUBLIC IN ACCORDANCE WITH THE REQUIREMENTS OF THE CONDOMINIUM ACT, CHAPTER 136, OF THE GEORGIA CONSTITUTION AND THE CONDOMINIUM ACT, CHAPTER 136, OF THE GEORGIA CONSTITUTION.



EXHIBIT "B" FLOOR PLAN SHEET 1, OF 2 SHEETS