

Freestanding! 7,245 SF - Fenced!

270/272 BETH STACEY BLVD, LEHIGH ACRES, FL 33936

**FOR LEASE**

Call Today!



FOR LEASE

\$8.00 NNN

7,245/SF 1.72 ACRES

C-2 ZONING

ALLOWS FOR MANY

USES!



**POSSIBLE USES:**

MINI WAREHOUSING - BUILDING MATERIALS SALES - AUTO REPAIR

AND SERVICE - CONTRACTORS AND MORE!

4 GRADE LEVEL ROLL UP DOORS

DO NOT DISTURB TENANT



[www.SperryCGA.com](http://www.SperryCGA.com)

**Theresa Blanch-Mitchell, CCIM**

1922 VICTORIA AVE STE A FT MYERS, FL 33901

239.265.2628

theresa@ccim.net

FL #BK3202944

Each office independently owned and operated.

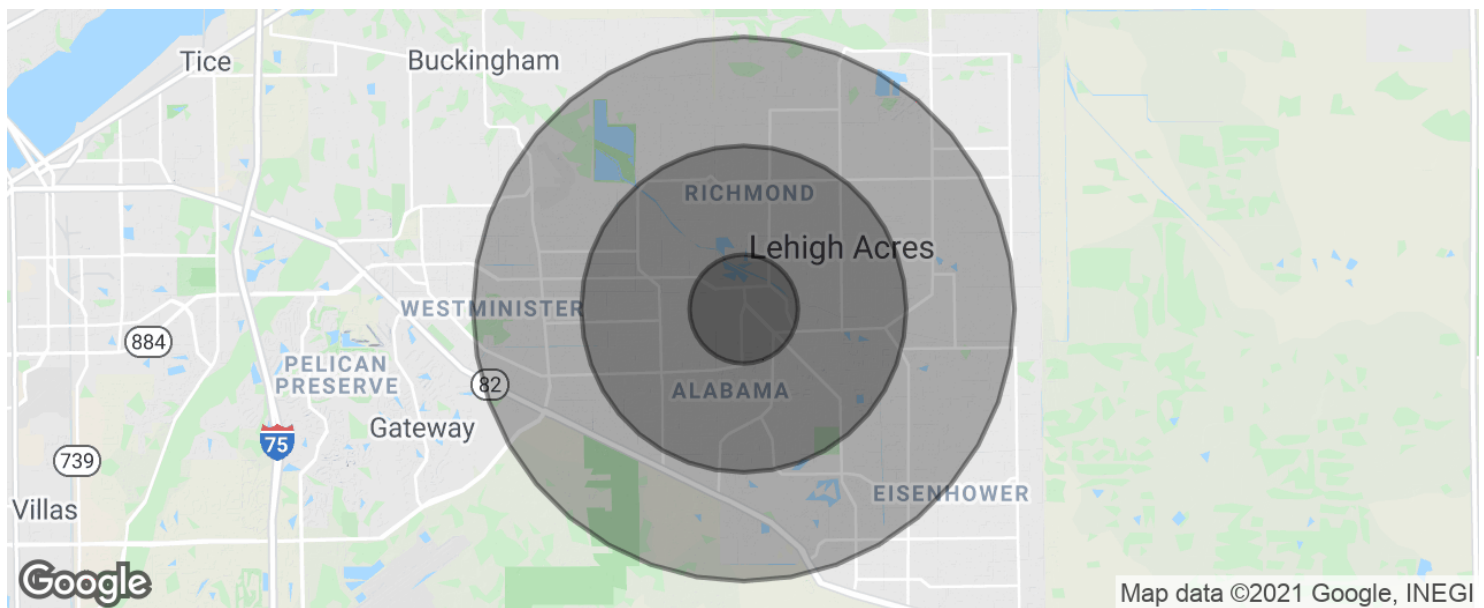
We obtained the information above from sources we believe to be reliable. However, we have not verified its accuracy and make no guarantee, warranty or representation about it. It is submitted subject to the possibility of errors, omissions, change of price, rental or other conditions, prior sale, lease or financing, or withdrawal without notice. We include projections, opinions, assumptions or estimates for example only, and they may not represent current or future performance of the property. You and your tax and legal advisors should conduct your own investigation of the property and transaction.

# Freestanding! 7,245 SF - Fenced!

## 270/272 BETH STACEY BLVD, LEHIGH ACRES, FL 33936

# FOR LEASE

## Industrial Property



<b>POPULATION</b>	<b>1 MILE</b>	<b>3 MILES</b>	<b>5 MILES</b>
Total population	6,082	36,068	74,993
Median age	39.5	36.7	34.8
Median age (Male)	33.1	33.4	32.4
Median age (Female)	42.7	39.2	36.7
<b>HOUSEHOLDS &amp; INCOME</b>	<b>1 MILE</b>	<b>3 MILES</b>	<b>5 MILES</b>
Total households	2,148	12,255	24,520
# of persons per HH	2.8	2.9	3.1
Average HH income	\$46,899	\$51,754	\$55,505
Average house value	\$146,592	\$175,483	\$202,663

\* Demographic data derived from 2010 US Census



[www.SperryCGA.com](http://www.SperryCGA.com)

### Theresa Blanch-Mitchell, CCIM

1922 VICTORIA AVE STE A FT MYERS, FL 33901

239.265.2628

theresa@ccim.net

FL #BK3202944

Each office independently owned and operated.

We obtained the information above from sources we believe to be reliable. However, we have not verified its accuracy and make no guarantee, warranty or representation about it. It is submitted subject to the possibility of errors, omissions, change of price, rental or other conditions, prior sale, lease or financing, or withdrawal without notice. We include projections, opinions, assumptions or estimates for example only, and they may not represent current or future performance of the property. You and your tax and legal advisors should conduct your own investigation of the property and transaction.

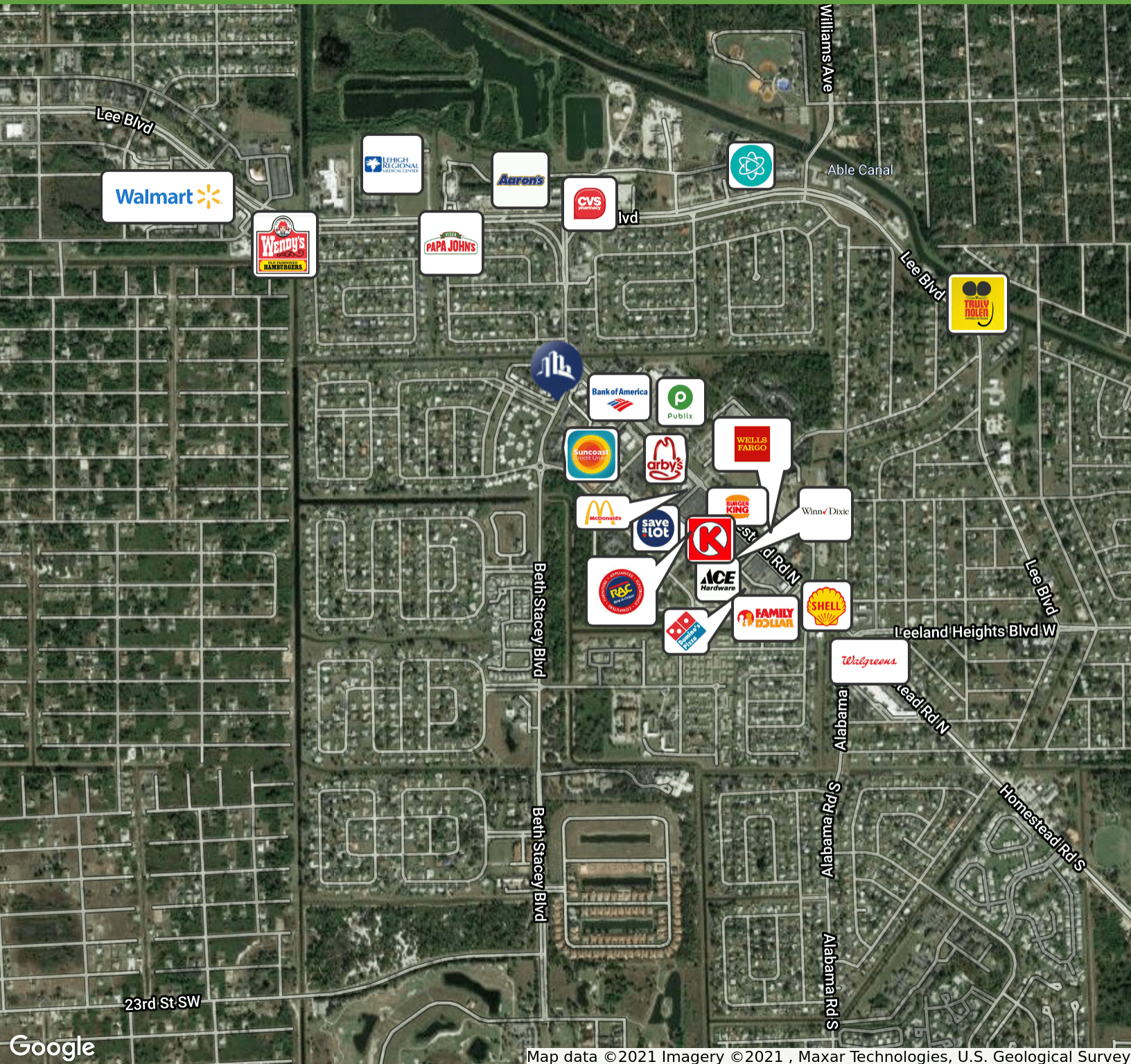


Freestanding! 7,245 SF - Fenced!

270/272 BETH STACEY BLVD, LEHIGH ACRES, FL 33936

**FOR LEASE**

Industrial Property



Map data ©2021 Imagery ©2021 , Maxar Technologies, U.S. Geological Survey



**Theresa Blanch-Mitchell, CCIM**  
 1922 VICTORIA AVE STE A FT MYERS, FL 33901  
 239.265.2628  
 theresa@ccim.net  
 FL #BK3202944

Each office independently owned and operated.

We obtained the information above from sources we believe to be reliable. However, we have not verified its accuracy and make no guarantee, warranty or representation about it. It is submitted subject to the possibility of errors, omissions, change of price, rental or other conditions, prior sale, lease or financing, or withdrawal without notice. We include projections, opinions, assumptions or estimates for example only, and they may not represent current or future performance of the property. You and your tax and legal advisors should conduct your own investigation of the property and transaction.

[www.SperryCGA.com](http://www.SperryCGA.com)