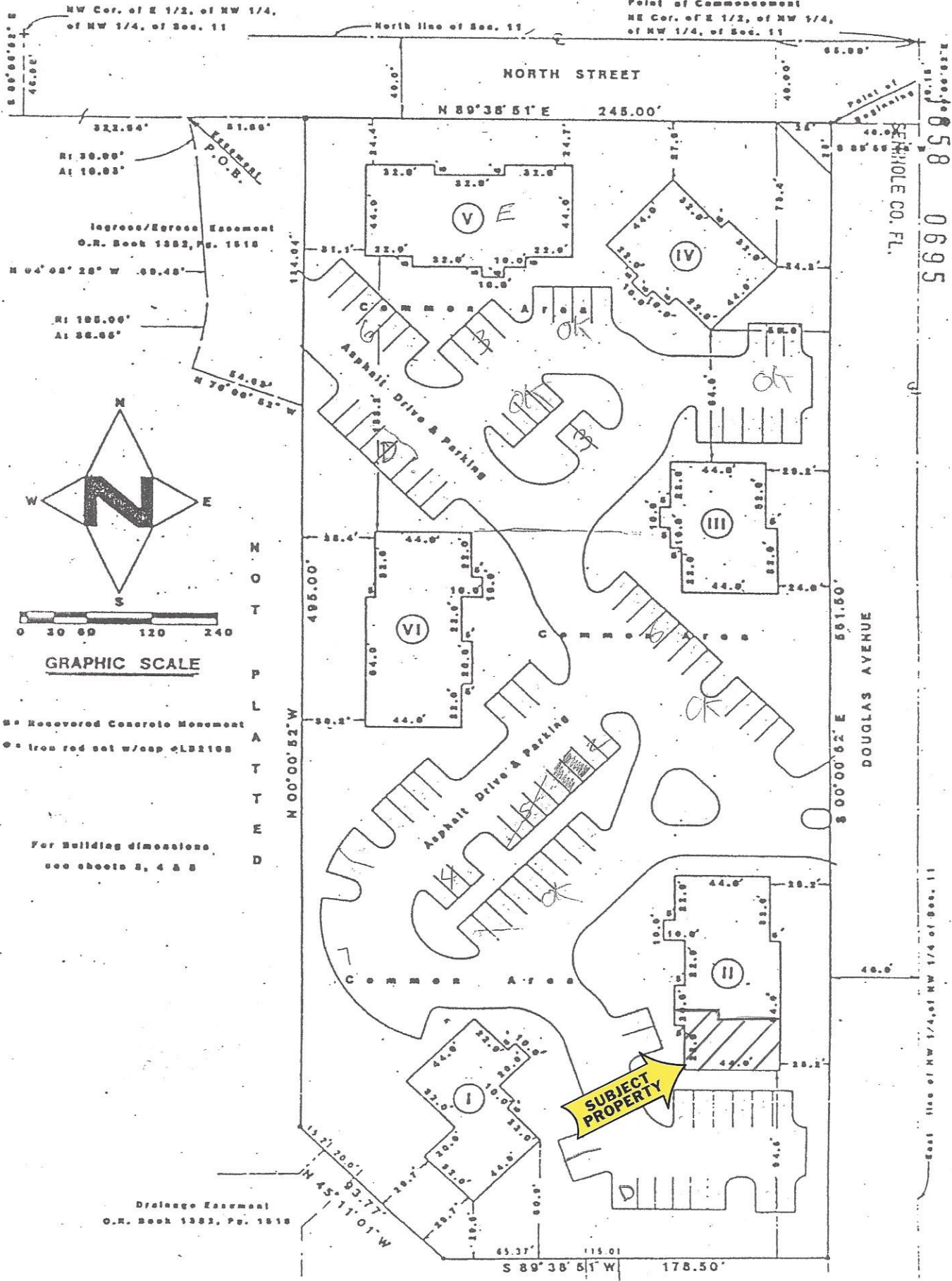


# DOUGLAS & NORTH, A CONDOMINIUM

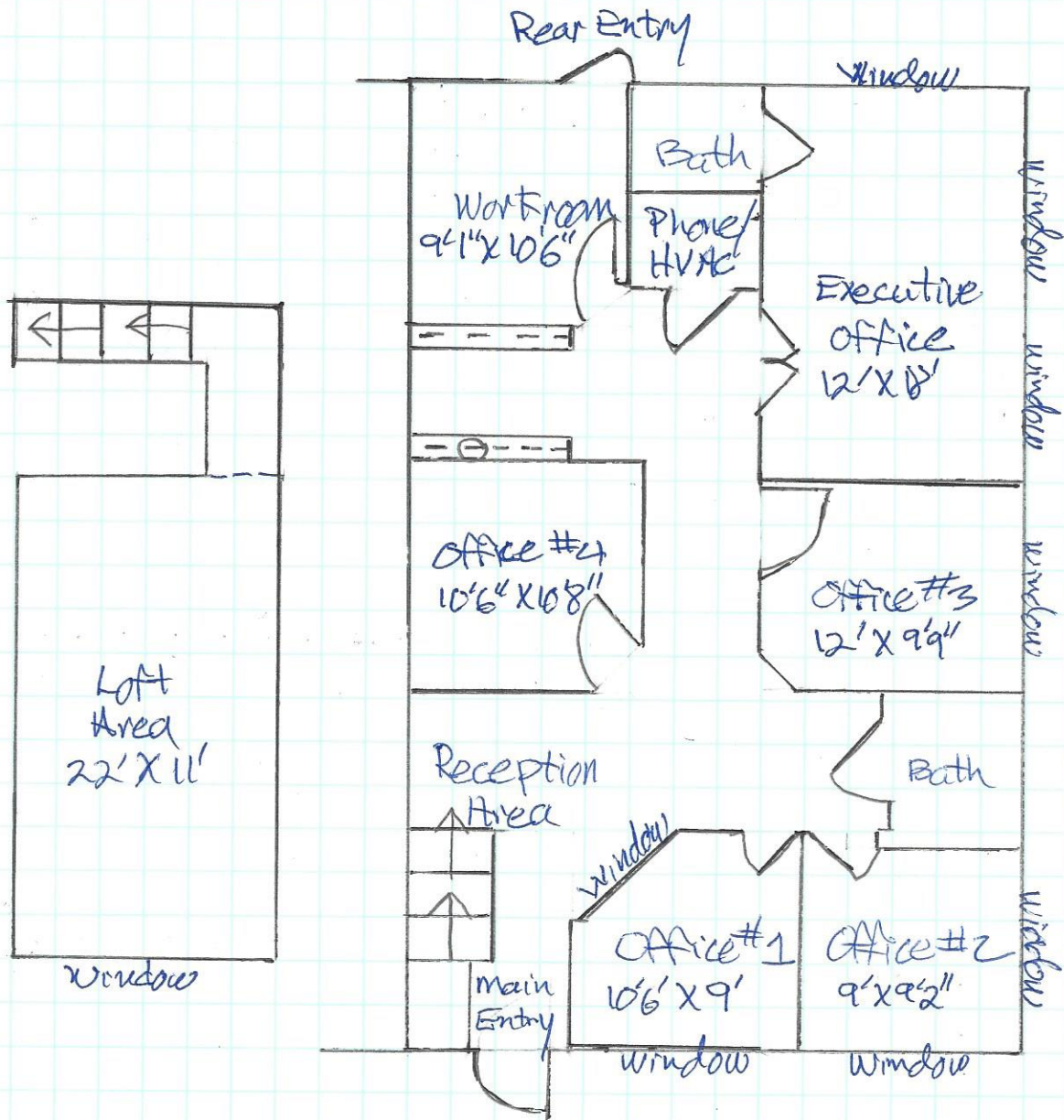
## SURVEY AND PLOT PLAN



BOOK 058 0695  
PAGE

OFFICIAL RECORDS

East line of NW 1/4, of NW 1/4 of Sec. 11



1541 St 1/2 978 Douglas Ave

Suite 100

Altamonte Springs, FL

32714