

Multi-Parcel/ Building FOR SALE



MILE STRETCH & SPARKLE, HOLIDAY, FL

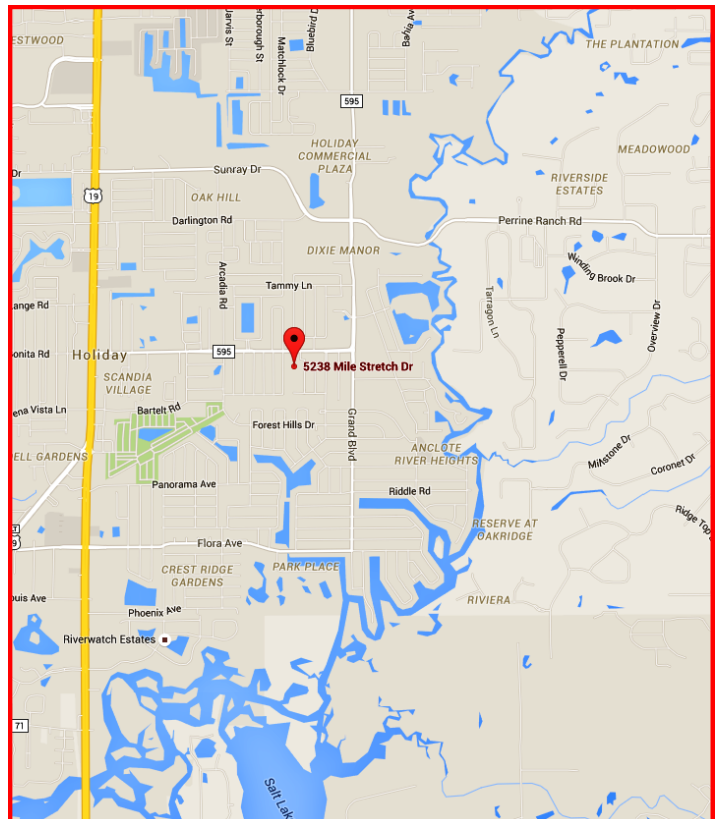
PROPERTY HIGHLIGHTS

- Four parcels totaling 3.67 acres
- Three parcels fronting Sparkle Lane
- 221 feet of frontage on Mile Stretch Drive
- Three buildings totaling over 12,000 SF
- Ample paved parking
- Located less than 1 mile east of US19
- Zoning: High Density Residential
- Ideal location for faith assembly, private school, daycare facility and many other uses

Offered at: \$750,000.00

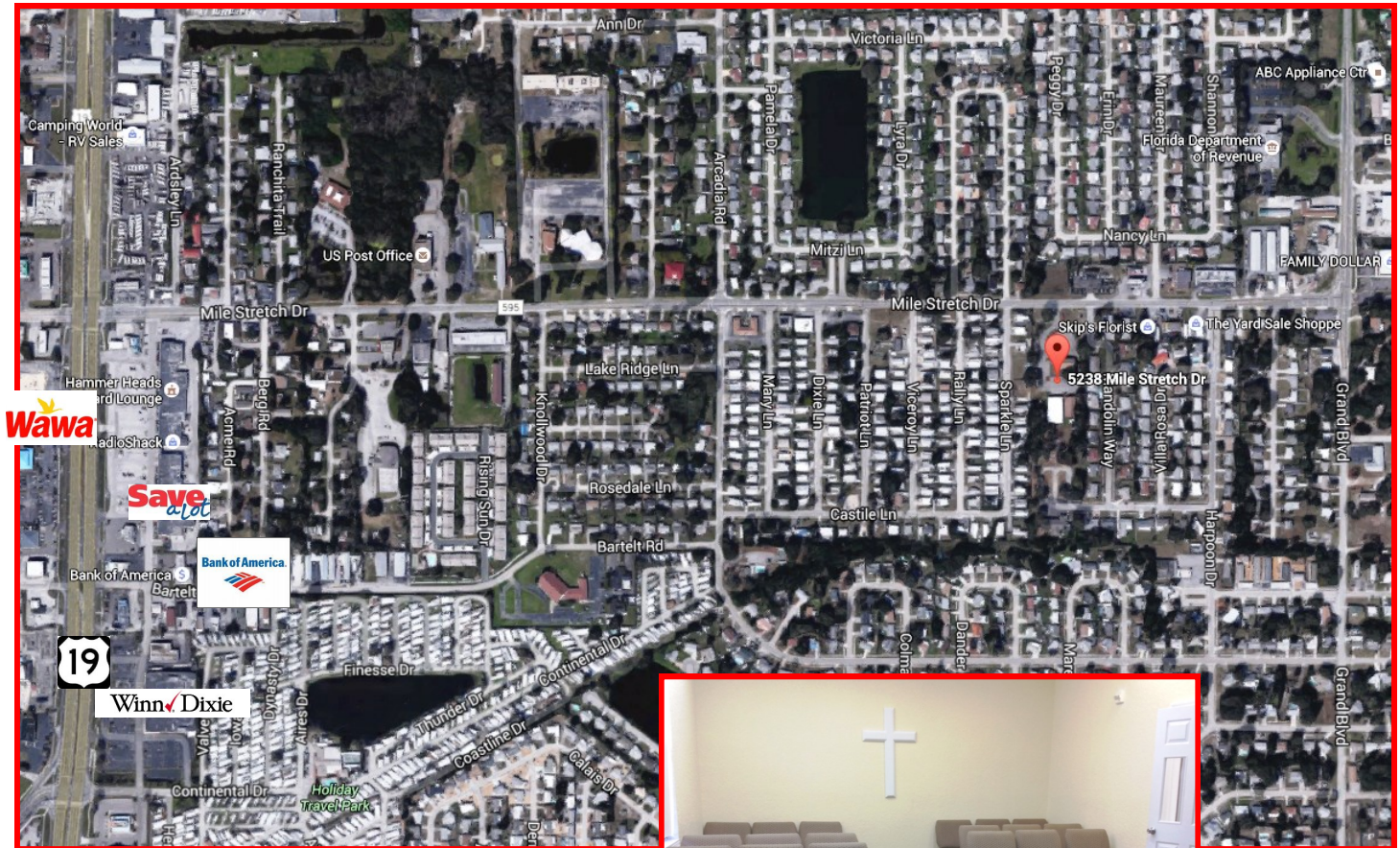
FOR INFORMATION, CONTACT:

Charles R. Grey
Office: (727) 849-2424
Chuck@figrey.com



6328 US HWY 19, NEW PORT RICHEY, FL 34652 (727) 849-2424 WWW.FIGREY.COM

5238 MILE STRETCH & 1904, 1908, 1918 SPARKLE LN, HOLIDAY, FL 34690



DEMOGRAPHICS

<u>Radius</u>	<u>1-Mile</u>	<u>3-Mile</u>	<u>5-Mile</u>
Population:	10,591	68,756	138,534
Households:	4,694	28,836	59,328
Avg HH Inc:	\$43,690	\$53,353	\$59,681

PROPERTY STATISTICS

Proposed Use:	Church, School, Etc.		
Size:	3.67 Acres	Topography:	Level
City:	Holiday	Dimensions:	Irregular
County:	Pasco	Zoning:	R4

FOR INFORMATION, CONTACT:

Charles R. Grey
Office: (727) 849-2424
Chuck@figrey.com



FIGREY & SON INC

COMMERCIAL REALTOR®

Established 1924

*Serving Florida
for over 90 years!*



6328 US HWY 19, NEW PORT RICHEY, FL 34652 (727) 849-2424 WWW.FIGREY.COM

The information given herewith is obtained from sources we consider reliable. We are not responsible for misstatements of facts, errors, omissions, changes in terms or conditions, or withdrawal from the market without prior notice.