

DEVELOPMENT FOR SALE



Moorings at Point O' Woods, Inverness, Florida 34450

- Bank owned property of 21 developed lots.
- Located within the Moorings at Point O' Woods development which is just north of Inverness in Citrus County.
- Zoned PDR, Planned Development by Citrus County. The future land use is RMU, Residential Mixed Use.
- The Community Improvements include paved streets, underground utilities, concrete sidewalks, signage and green areas.

Sale Price: \$185,000

FOR MORE INFORMATION:

Jeff Grey

jeff@figrey.com

Or

Bob Upton

robertwupton@figrey.com

(727) 849-2424



COMMERCIAL REALTOR®

Established 1924



F.I. GREY & SON, INC

6328 US HWY 19

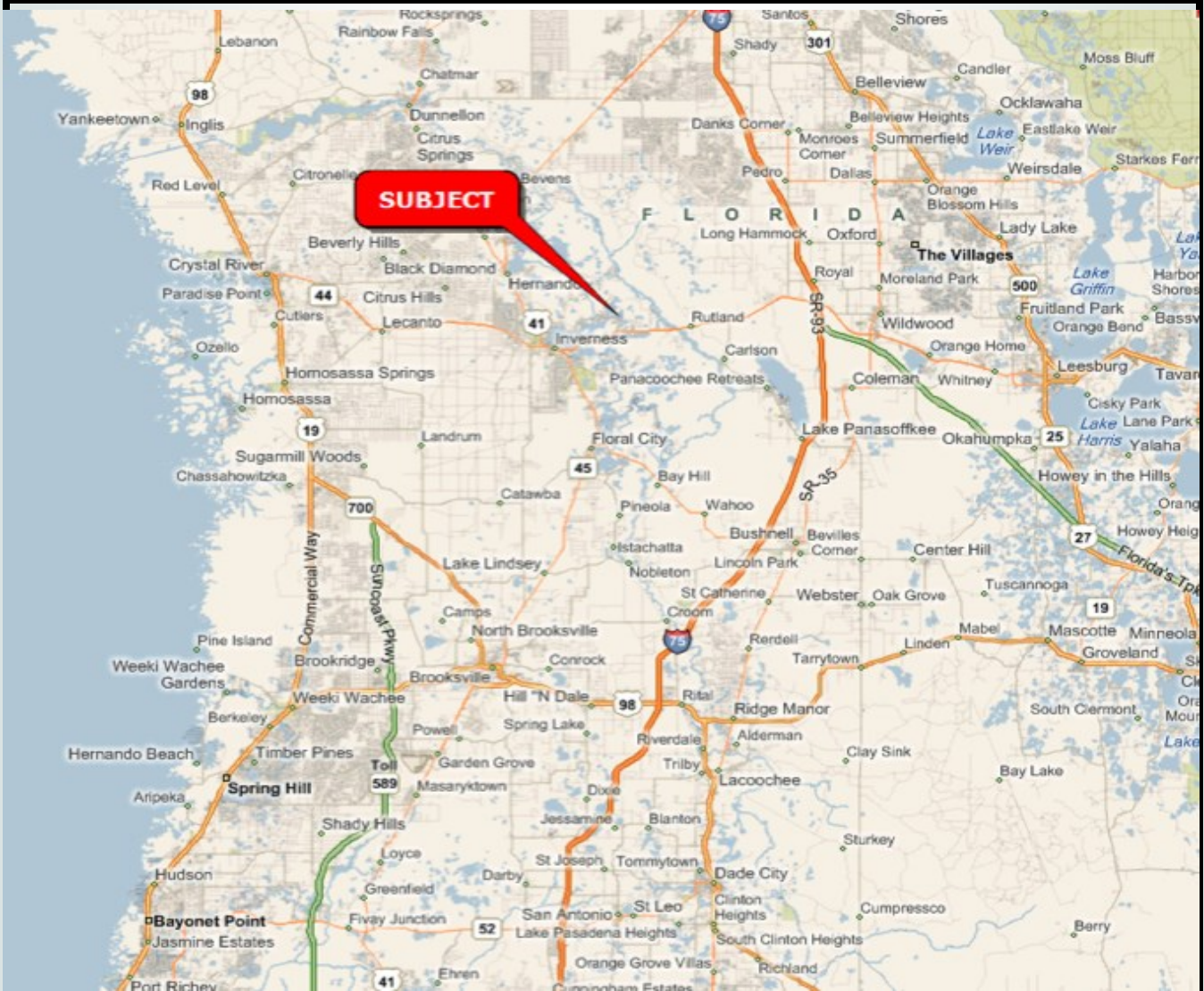
NEW PORT RICHEY, FL 34652



The information given herewith is obtained from sources we consider reliable. We are not responsible for misstatements of facts, errors, omissions, changes in terms or conditions, or withdrawal from the market without prior notice.

727-

MOORINGS at POINT O' WOODS, INVERNESS, FL 34450



DEMOGRAPHICS (2013)

<u>Radius</u>	<u>1-Mile</u>	<u>3-Mile</u>	<u>5-Mile</u>
Population:	3,340	16,471	30,934
Households:	1,554	7,468	13,874
Average HH	\$41,687	\$42,172	\$44,255
Traffic Counts:	AADT 36,500		

PROPERTY STATISTICS

Proposed Use:	Planned Development / Single Family	
Size:	Topography:	Level
City:	Inverness	Dimensions: Irregular
County:	Citrus	Zoning: PDR
	Taxes (2013):	\$5,541.18



F.I. GREY & SON, INC

6328 US HWY 19

NEW PORT RICHEY, FL 34652



The information given herewith is obtained from sources we consider reliable. We are not responsible for misstatements of facts, errors, omissions, changes in terms or conditions, or withdrawal from the market without prior notice.

727-

MOORINGS at POINT O' WOODS, INVERNESS, FL 34450



F.I. GREY & SON, INC
6328 US HWY 19
NEW PORT RICHEY, FL 34652



727-849-2424

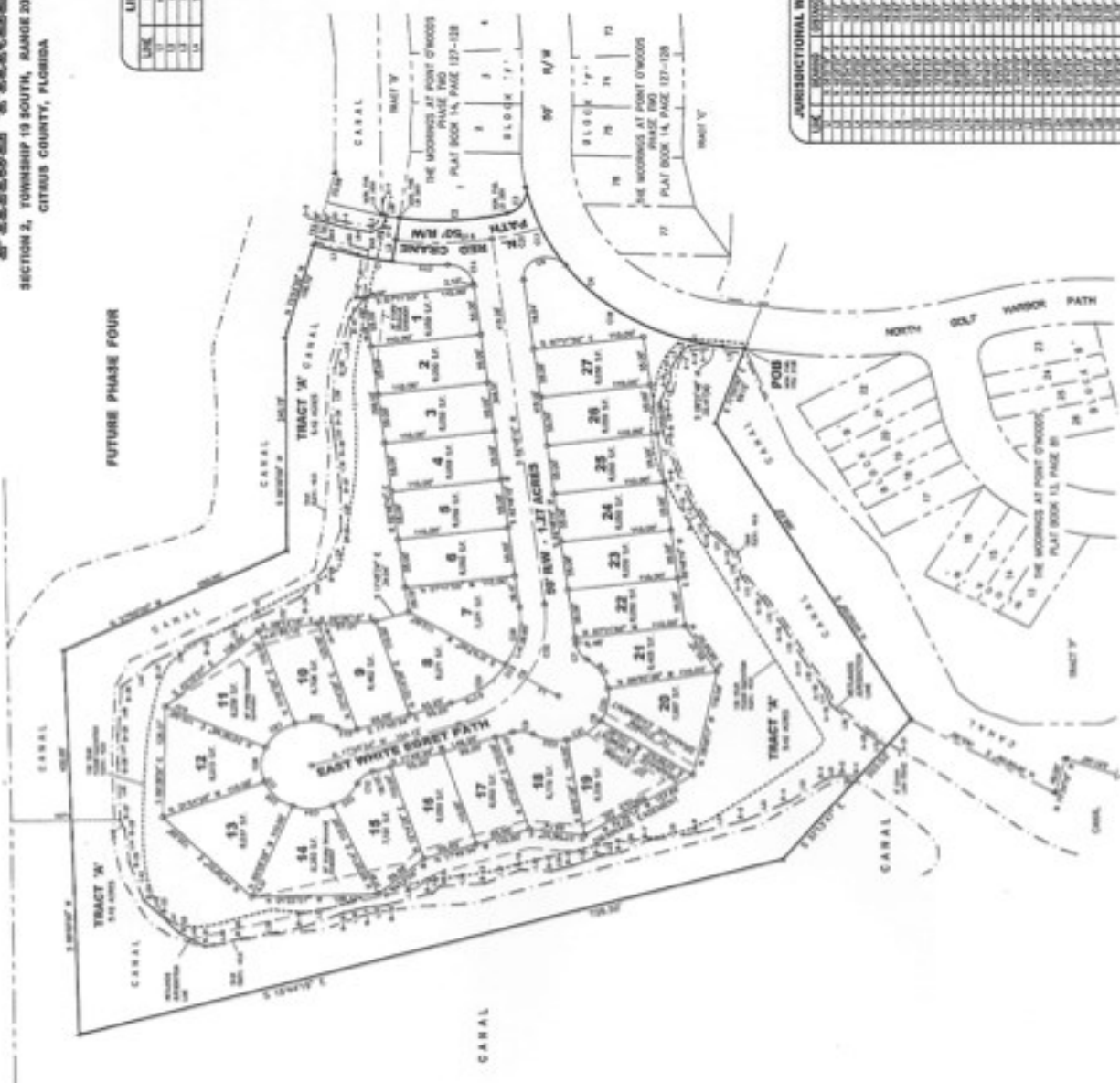
The information given herewith is obtained from sources we consider reliable. We are not responsible for misstatements of facts, errors, omissions, changes in terms or conditions, or withdrawal from the market without prior notice.

SURVEY OF THE MOORINGS AT POINT O' WOODS

MOORINGS AT POINT O' WOODS PHASE THREE

SECTION 2, TOWNSHIP 19 SOUTH, RANGE 20 EAST
CITRUS COUNTY, FLORIDA

LINE	BEARINGS	DISTANCE
1	S 12° 15' 00" E	11.00
2	S 89° 00' 00" W	31.00
3	S 89° 00' 00" W	31.00
4	S 12° 15' 00" E	11.00



LINE	BEARINGS	DISTANCE	REMARKS
1	S 12° 15' 00" E	11.00	
2	S 89° 00' 00" W	31.00	
3	S 89° 00' 00" W	31.00	
4	S 12° 15' 00" E	11.00	
5	S 12° 15' 00" E	11.00	
6	S 89° 00' 00" W	31.00	
7	S 89° 00' 00" W	31.00	
8	S 12° 15' 00" E	11.00	
9	S 12° 15' 00" E	11.00	
10	S 89° 00' 00" W	31.00	
11	S 89° 00' 00" W	31.00	
12	S 12° 15' 00" E	11.00	
13	S 12° 15' 00" E	11.00	
14	S 89° 00' 00" W	31.00	
15	S 89° 00' 00" W	31.00	
16	S 12° 15' 00" E	11.00	
17	S 12° 15' 00" E	11.00	
18	S 89° 00' 00" W	31.00	
19	S 89° 00' 00" W	31.00	
20	S 12° 15' 00" E	11.00	
21	S 12° 15' 00" E	11.00	
22	S 89° 00' 00" W	31.00	
23	S 89° 00' 00" W	31.00	
24	S 12° 15' 00" E	11.00	
25	S 12° 15' 00" E	11.00	
26	S 89° 00' 00" W	31.00	
27	S 89° 00' 00" W	31.00	
28	S 12° 15' 00" E	11.00	
29	S 12° 15' 00" E	11.00	
30	S 89° 00' 00" W	31.00	
31	S 89° 00' 00" W	31.00	
32	S 12° 15' 00" E	11.00	
33	S 12° 15' 00" E	11.00	
34	S 89° 00' 00" W	31.00	



F.I. GREY & SON, INC
6328 US HWY 19
NEW PORT RICHEY, FL 34652



The information given herewith is obtained from sources we consider reliable. We are not responsible for misstatements of facts, errors, omissions, changes in terms or conditions, or withdrawal from the market without prior notice.