

RETAIL FOR LEASE

Crystal Lake Plaza

2852 CURRY FORD RD, ORLANDO, FL 32806



AVAILABLE SPACES

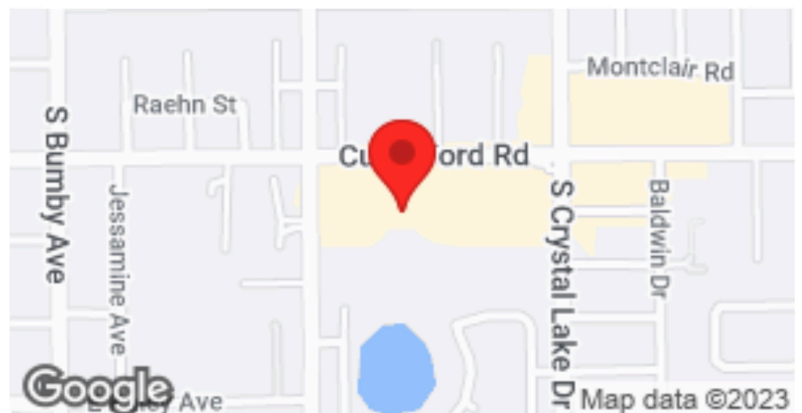
Suite	Rate	Size	Type
2852	Call For Pricing	1,005 SF	NNN

OFFERING SUMMARY

SPACE AVAILABLE:	1,005 SF
LEASE RATE:	Call For Pricing
LEASE TYPE:	NNN
CURRY FORD RD AADT:	7,800
CRYSTAL LAKE AADT:	8,300
ZONING:	AC-1
FUTURE LAND USE:	COMM-AC
LOT SIZE:	7.5 AC
YEAR BUILT:	1963
BUILDING SIZE:	77,336 SF

Property Overview

- Located just one block away from the Hourglass District, the Winn-Dixie anchored Crystal Lake Plaza is an excellent choice for both national and local businesses
- 3-Mile Population: 116,713
- 3-Mile Median HHI: \$48,580



CONTACT US

FRANCISCO JARAMILLO, CCIM

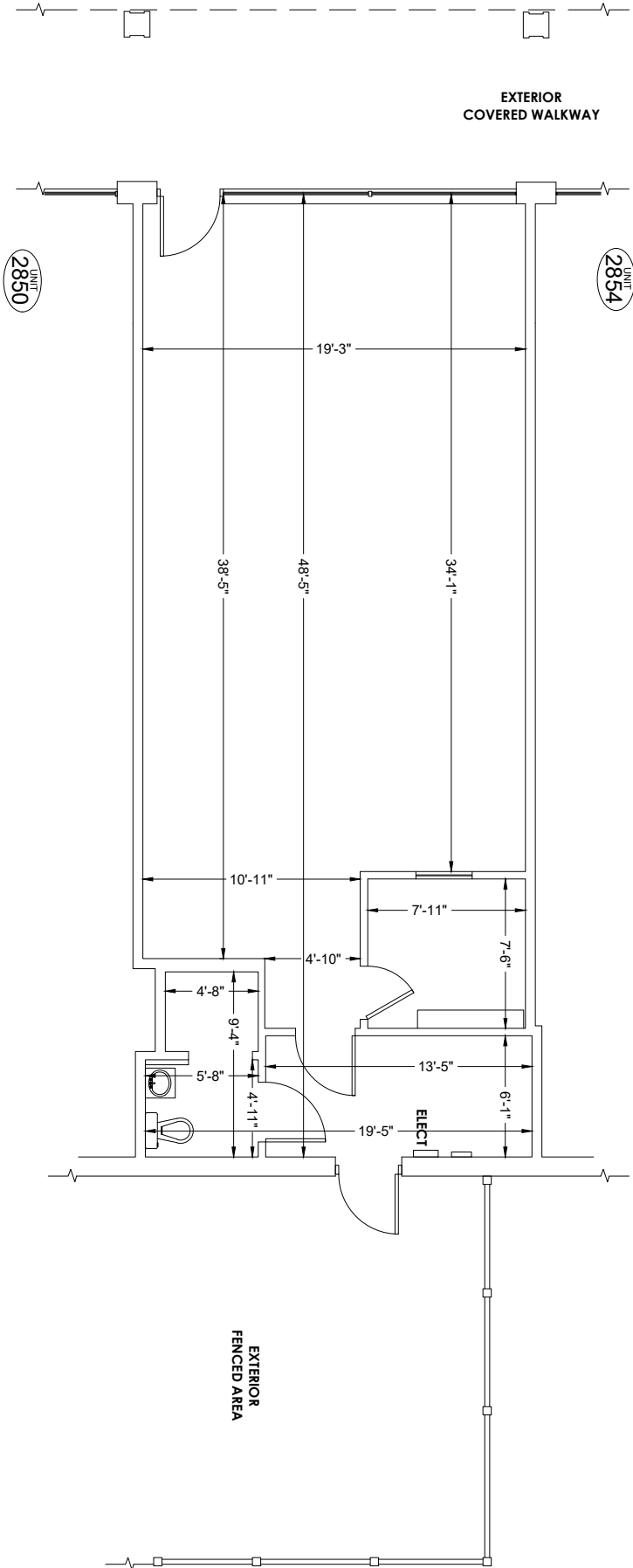
Principal, Managing Broker

(407) 683-4444

Francisco@407cre.com

BK 3252370, FL





SCALE: 3/16" = 1'-0"
 0' 5'

measure DYNAMICS
 ORLANDO 407.971.8888
 TAMPA 727.548.9595
 www.measuredynamics.com

PREPARED FOR:
GREEN 29 LLC
 C/O TRU MANAGEMENT GROUP, LLC
 PO BOX 541557
 ORLANDO, FLORIDA 32854

PROJECT NAME:
RETAIL SPACE
 2852 CURRY FORD ROAD
 ORLANDO, FLORIDA 32806

PROJECT NUMBER:
24-0115
 DRAWN BY: OR
 CHECKED BY: BJM
 DATE: FEBRUARY 2024

SHEET TITLE:
FLOOR PLAN
 SHEET NUMBER:
A-1