

WOLF

REALTY, INC.



14021 N. 51st Ave, Ste 114 • Glendale, AZ 85306-4840
Phone: (602) 843-5200 • FAX: (602) 843-5718

LEASE OPPORTUNITY 2310 WEST BELL ROAD

- * C-2 ZONING
- * LARGE MONUMENT SIGN ON BELL ROAD BUILDING
- * BUILDING SIGNAGE:
- * TRAFFIC COUNT: 47,000/DAY
- * 23 PARKING
- * GATED PARKING

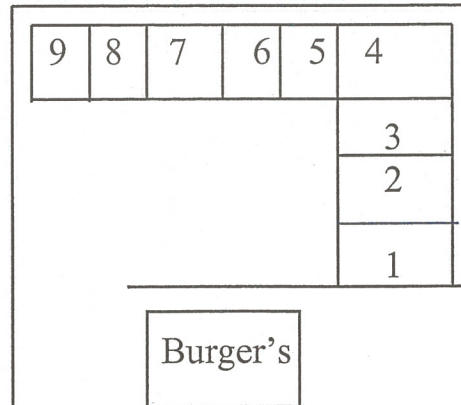
- * Suite 9, 663 sqft.

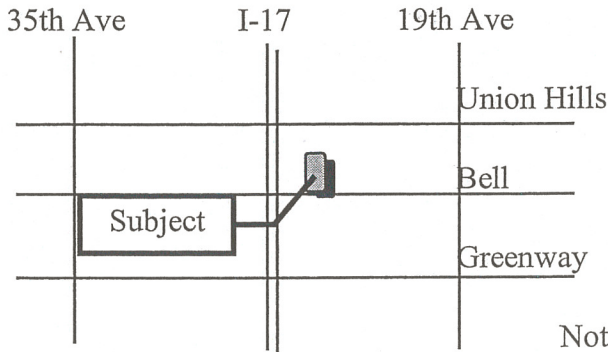


Prices starting at \$16.00/PSF Base year Gross

For details contact:

Scot E. Hall
 Broker
 Wolf Realty, Inc.
 14021 N. 51st Avenue #114
 Glendale, Arizona 85306
 (602) 843-5200





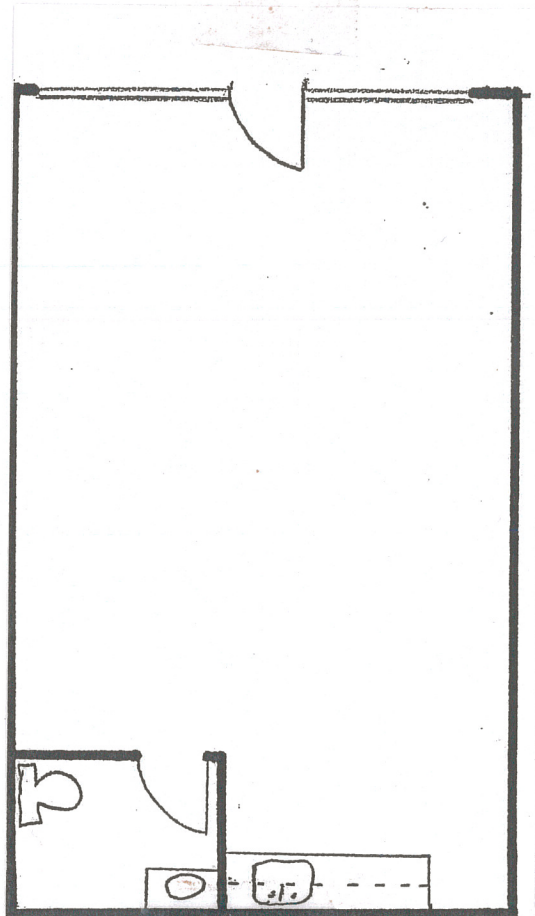
Not to scale



Information furnished is from sources deemed reliable. We have no reason to doubt it's accuracy, but we do not guarantee it. Purchaser should independently verify all information. This offering is submitted subject to errors and omissions, change in price, sale, financing and/or withdrawal without notice.

2310 W Bell Road, Phoenix, AZ. 85023

- Suite 1, 730 sqft, leased
- Suite 2, 730 sqft. leased
- Suite 3, 730 sqft. leased
- Suite 4/5, 1440 sqft leased
- Suite 6, 640 sqft. leased
- Suite 7, 640 sqft, leased
- Suite 8, 640 sqft, leased
- Suite 9, **663 sqft, Available**



Information furnished is from sources deemed reliable. We have no reason to doubt it's accuracy, but we do not guarantee it. Purchaser should independently verify all information. This offering is submitted subject to errors and omissions, change in price, sale, financing and/or withdrawal without notice.