

**Church**  
**5,706 SF (approx.)**

**\$635,000**

**FOR SALE**



**18952 Avenue 144 (Hwy 190), Poplar, CA 93257**

## **Property Features**

- Church: 5,706 sf. (approx.)
- Sanctuary
- Meeting hall
- Kitchen
- Restroom
- Lot 86,902 sf. (approx.)
  
- APN: 237-101-011-000

**For more  
information contact:**

**Bill Whitlatch,**  
GRI, RE Master's™, CCIM  
Associate Broker  
DRE License #00874715  
559-679-6611  
bill@whitlatch.net  
Website: whitlatchre.com

(See other side for map and additional Pictures)



For more information contact:

**Bill Whitlatch,**  
GRI, RE Masters™, CCIM  
Associate Broker  
DRE License #00874715  
559-679-6611

[bill@whitlatch.net](mailto:bill@whitlatch.net) – [whitlatchre.com](http://whitlatchre.com)



NO WARRANTY OR REPRESENTATION, EXPRESS OR IMPLIED, IS MADE AS TO THE ACCURACY OF THE INFORMATION CONTAINED HEREIN, AND THE SAME IS SUBMITTED SUBJECT TO ERRORS, OMISSIONS, CHANGE OF PRICE, RENTAL OR OTHER CONDITIONS, PRIOR SALE, LEASE OR FINANCING, OR WITHDRAWAL WITHOUT NOTICE, AND OF ANY SPECIAL LISTING CONDITIONS IMPOSED BY OUR PRINCIPALS NO WARRANTIES OR REPRESENTATIONS ARE MADE AS TO THE CONDITION OF THE PROPERTY OR ANY HAZARDS CONTAINED THEREIN ARE ANY TO BE IMPLIED.



**For Sale**





For more information contact:

**Bill Whitlatch,**  
GRI, RE Masters™, CCIM  
Associate Broker  
DRE License #00874715  
559-679-6611  
bill@whitlatch.net – whitlatchre.com



NO WARRANTY OR REPRESENTATION, EXPRESS OR IMPLIED, IS MADE AS TO THE ACCURACY OF THE INFORMATION CONTAINED HEREIN, AND THE SAME IS SUBMITTED SUBJECT TO ERRORS, OMISSIONS, CHANGE OF PRICE, RENTAL OR OTHER CONDITIONS, PRIOR SALE, LEASE OR FINANCING, OR WITHDRAWAL WITHOUT NOTICE, AND OF ANY SPECIAL LISTING CONDITIONS IMPOSED BY OUR PRINCIPALS NO WARRANTIES OR REPRESENTATIONS ARE MADE AS TO THE CONDITION OF THE PROPERTY OR ANY HAZARDS CONTAINED THEREIN ARE ANY TO BE IMPLIED.

**For Sale**



# THE WHITLATCH GROUP

Commercial Real Estate Services DRE Lic. 02202718

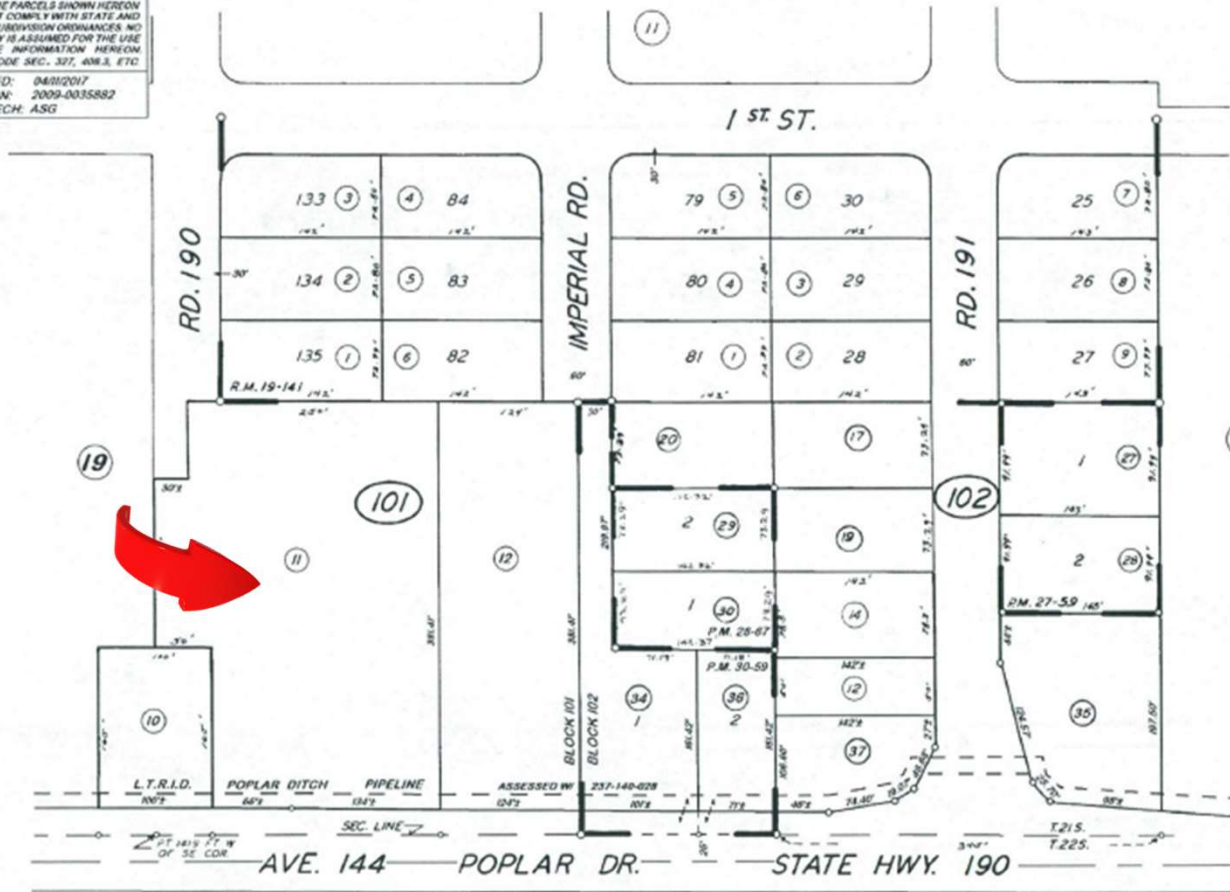
For more information contact:

**Bill Whitlatch,**  
**GRI, RE Masters™, CCIM**  
 Associate Broker  
 DRE License #00874715  
 559-679-6611

bill@whitlatch.net – whitlatchre.com

1/2 OF SE 1/4 OF SE 1/4 SEC. 34, T.21S., R.26E., M.D.B.&M. TAX CODE AREA 125-008 237-10

**DISCLAIMER**  
 THIS MAP WAS PREPARED FOR LOCAL PROPERTY ASSESSMENT PURPOSES ONLY. THE PARCELS SHOWN HEREON MAY NOT COMPLY WITH STATE AND LOCAL SUBDIVISION ORDINANCES. NO LIABILITY IS ASSUMED FOR THE USE OF THE INFORMATION HEREON. R & T CODE SEC. 307, 408.3, ETC.  
 REVISED: 04/02/2017  
 REASON: 2009-0035882  
 CAD TECH: ASG



POR. TRACT NO. 99, R.M. 19-141  
 PARCEL MAP NO. 2658, P.M. 27-59  
 PARCEL MAP NO. 2766, P.M. 28-67  
 PARCEL MAP NO. 2958, P.M. 30-59

BK. 300

VICINITY OF POPLAR  
 ASSESSOR'S MAPS BK. 237, PG. 10.  
 COUNTY OF TULARE, CALIF.

NOTE — ASSESSOR'S BLOCK NUMBERS SHOWN IN ELLIPSES  
 ASSESSOR'S PARCEL NUMBERS SHOWN IN CIRCLES



NO WARRANTY OR REPRESENTATION, EXPRESS OR IMPLIED, IS MADE AS TO THE ACCURACY OF THE INFORMATION CONTAINED HEREIN, AND THE SAME IS SUBMITTED SUBJECT TO ERRORS, OMISSIONS, CHANGE OF PRICE, RENTAL OR OTHER CONDITIONS, PRIOR SALE, LEASE OR FINANCING, OR WITHDRAWAL WITHOUT NOTICE, AND OF ANY SPECIAL LISTING CONDITIONS IMPOSED BY OUR PRINCIPALS. NO WARRANTIES OR REPRESENTATIONS ARE MADE AS TO THE CONDITION OF THE PROPERTY OR ANY HAZARDS CONTAINED THEREIN ARE ANY TO BE IMPLIED.

# For Sale