





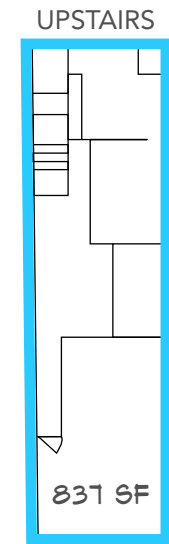
Fairchild Partners[®]

7250 NW 41 STREET, DORAL
TOTAL BUILDING SIZE 19,178 SF

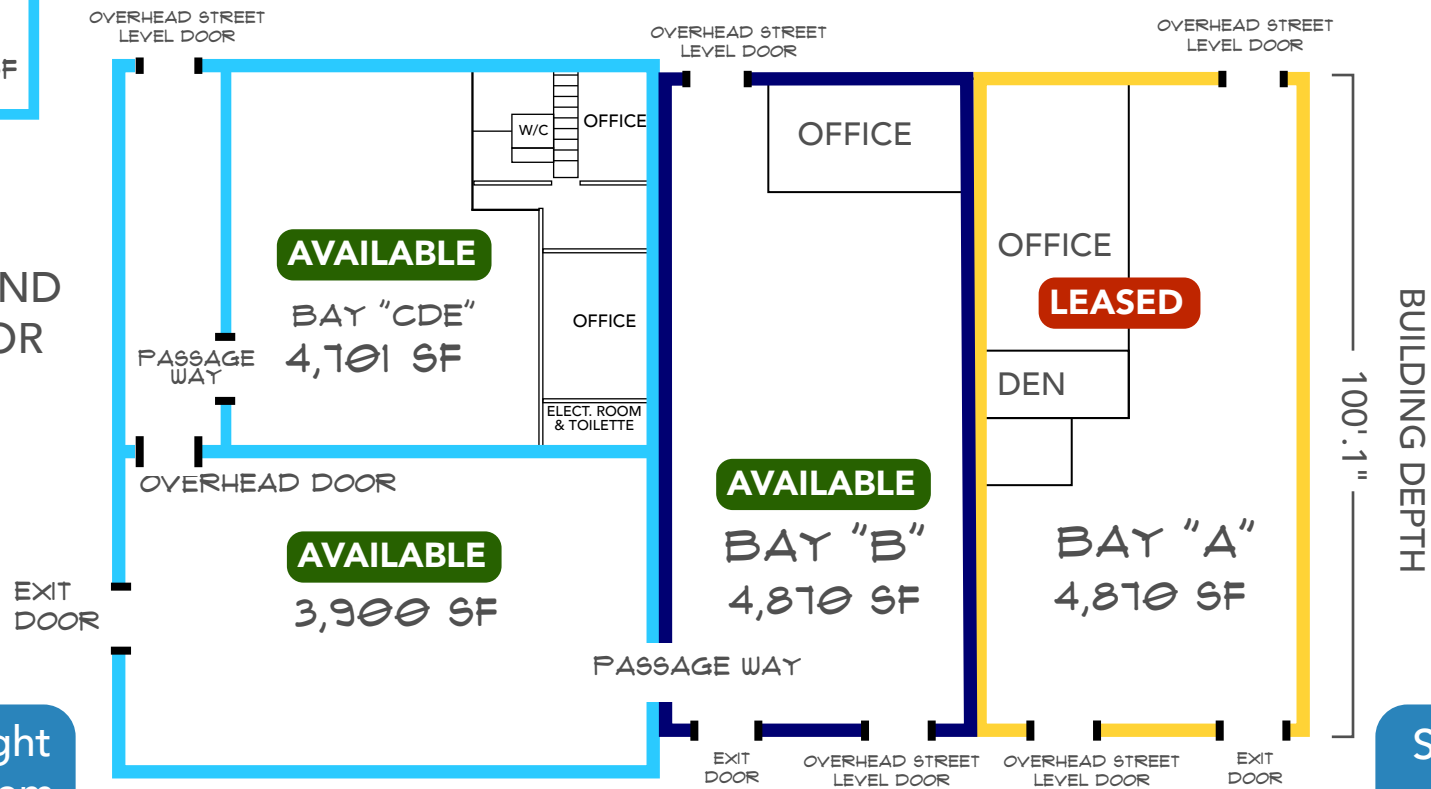
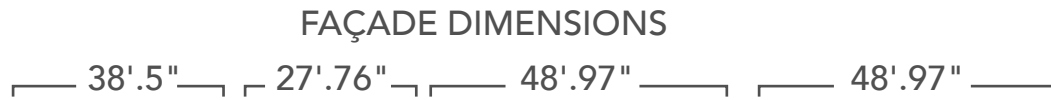


AVAILABLE

	BAY "A"	4,870 SF
	BAY "B"	4,870 SF
	BAY "B - E"	13,471 SF
	BAY "C - E"	8,601 SF
FULL BUILDING		19,178 SF



SECOND FLOOR



16 Foot Ceiling Height
TWIN "T" Roof System

Street Level Front
Loading Doors

We have received these measurements from reliable sources, but we do not guarantee the accuracy of such information