

PROPERTY SUBLEASE DETAILS

- ± 41,312 SF warehouse
- ± 30' clear height
- 2 electric dock high doors (8'x8'), one with leveler
- 4 manual dock high doors (8'x8')
- 3 rail spur access doors with levelers, 12'x8'
- 1 concrete ramp
- Base Rental Rate: \$15.00/SF, not including electricity
- Ample Parking
- Exterior and common area signage
- Sublease term through June 30, 2033 (will consider shorter sub-lease terms)
- Fiber optic wired, multiple backup generators

ABOUT SUBLEASE SPACE



PRICE
\$15.00 SF



YEAR BUILT
1988



AVAILABLE SF
± 41,312



PARKING
Ample - Surface



LOCATION
Deerfield Beach, FL

For more information:

Keith R. Graves, CCIM, SIOR

954.652.2031 | Kgraves@Bergercommercial.Com
bergercommercial.com

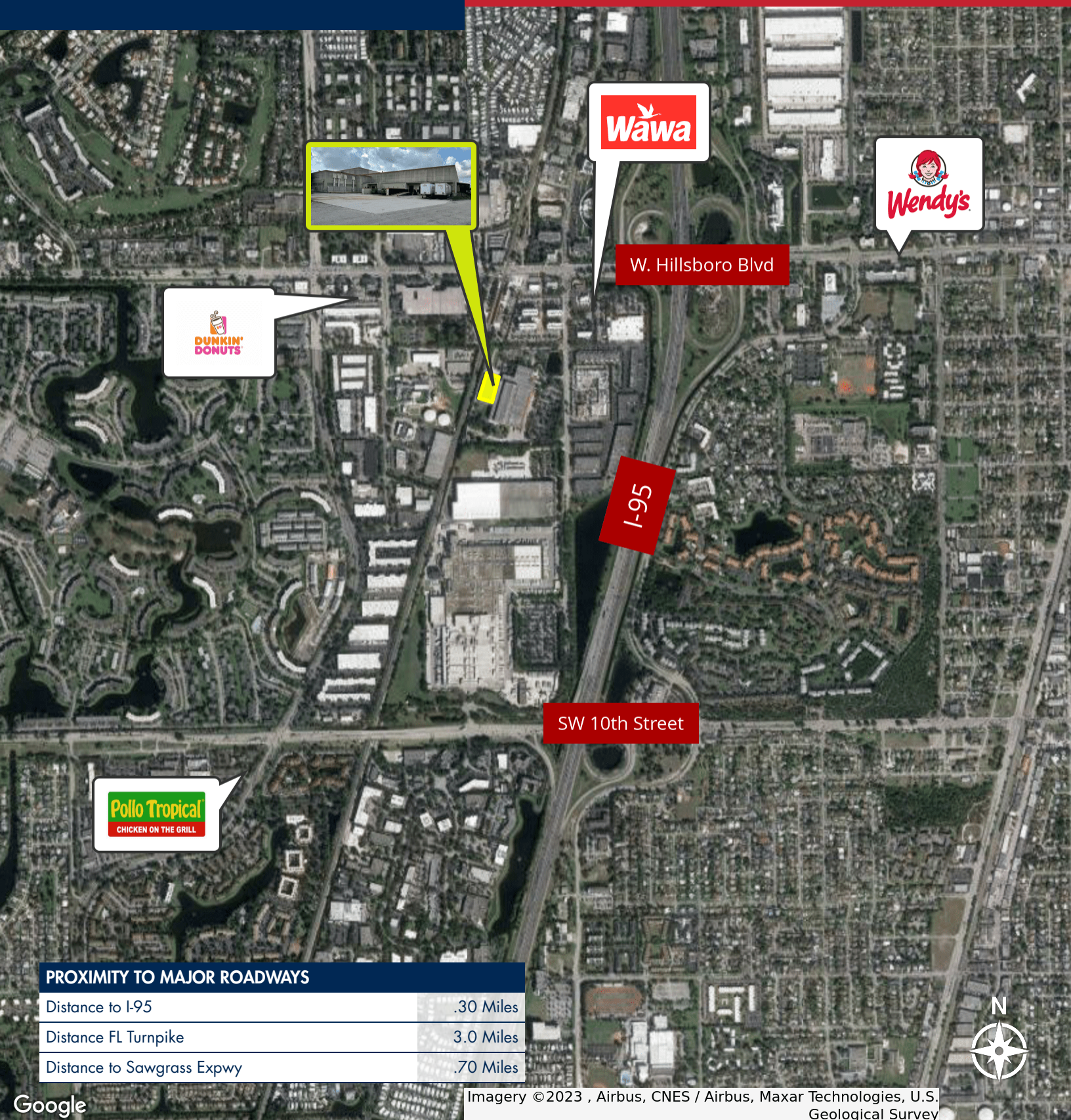
Lawrence Oxenberg

954.652.2017 | Loxenberg@Bergercommercial.Com



333 SW 12TH AVE DEERFIELD BEACH, FL 33442

AERIAL MAP



W. Hillsboro Blvd

I-95

SW 10th Street



PROXIMITY TO MAJOR ROADWAYS

Distance to I-95	.30 Miles
Distance FL Turnpike	3.0 Miles
Distance to Sawgrass Expwy	.70 Miles



Google

Imagery ©2023 , Airbus, CNES / Airbus, Maxar Technologies, U.S. Geological Survey

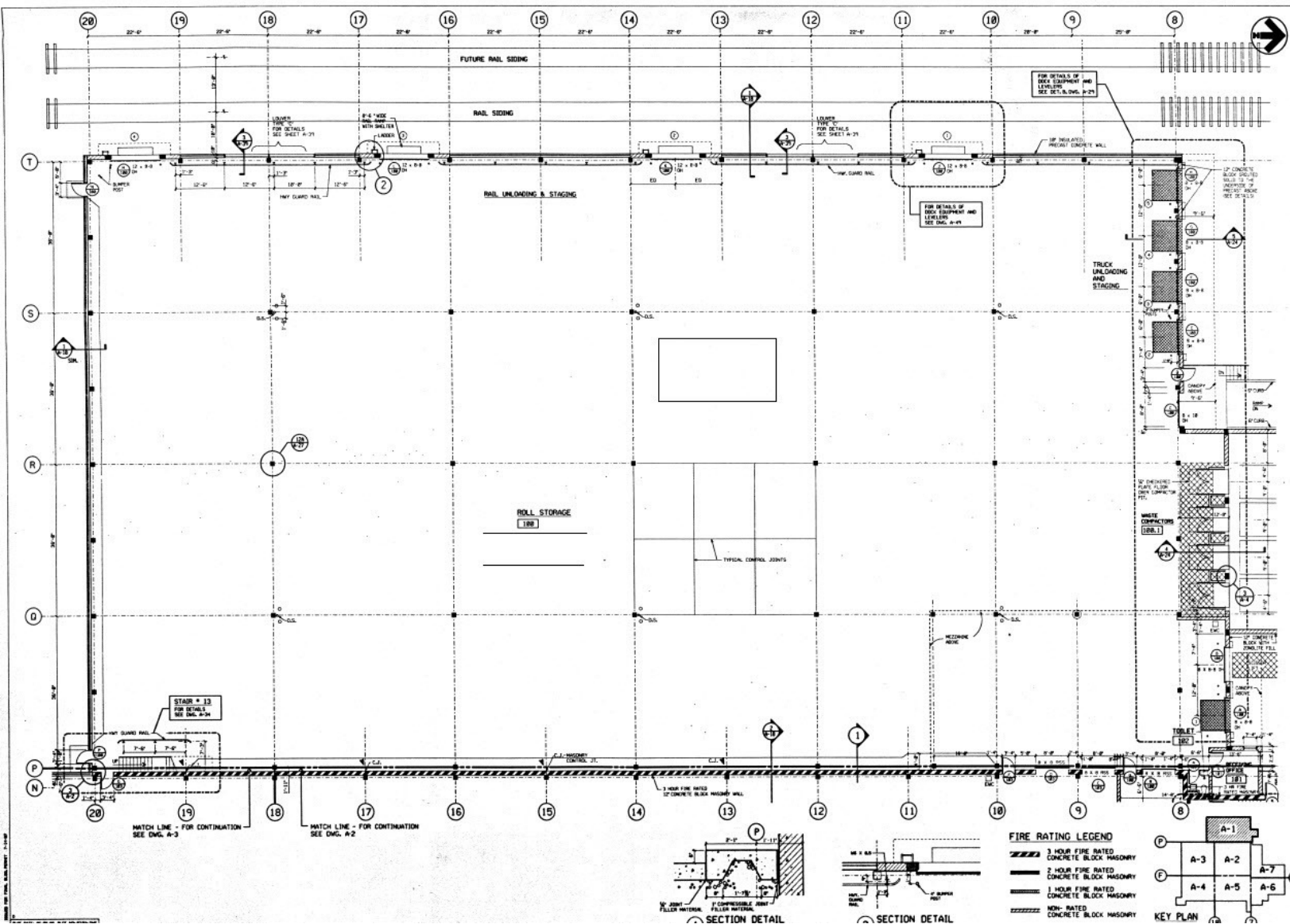
For more information:

Keith R. Graves, CCIM, SIOR
 954.652.2031 | Kgraves@Bergercommercial.Com
 bergercommercial.com

Lawrence Oxenberg
 954.652.2017 | Loxenberg@Bergercommercial.Com



Information furnished regarding this property is from sources deemed reliable, but no warranty or representation as to the accuracy thereof and it is submitted subject to errors, omissions, prior sale, lease or withdrawal without prior notice.



Schematic shown is for illustrative purposes only.

For more information:
Keith R. Graves, CCIM, SIOR
954.652.2031 | Kgraves@Bergercommercial.Com
bergercommercial.com

Lawrence Oxenberg
954.652.2017 | Loxenberg@Bergercommercial.Com



Information furnished regarding this property is from sources deemed reliable, but no warranty or representation as to the accuracy thereof and it is submitted subject to errors, omissions, prior sale, lease or withdrawal without prior notice.