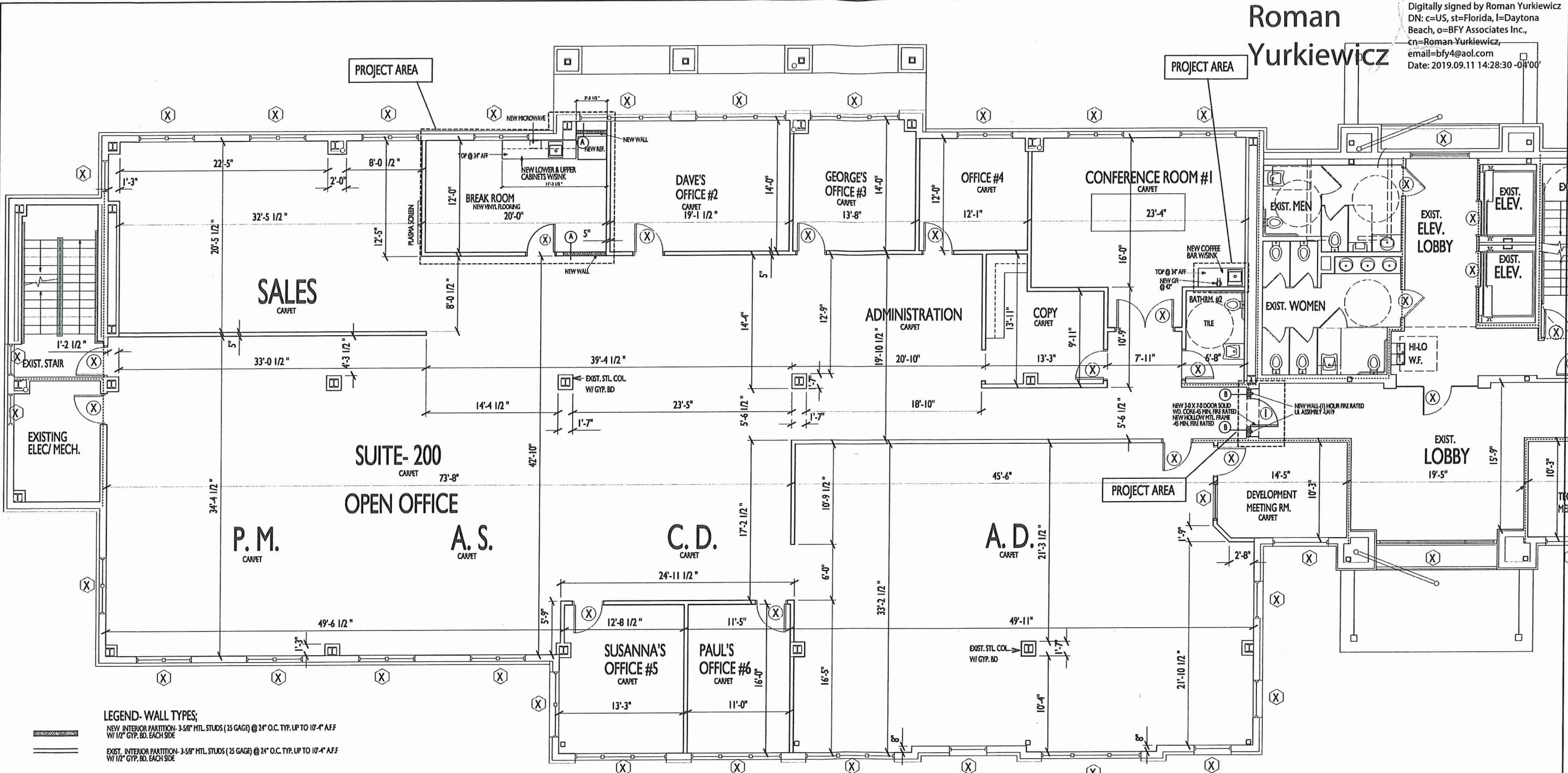


Roman Yurkiewicz

Digitally signed by Roman Yurkiewicz  
 DN: c=US, st=Florida, l=Daytona Beach, o=BFY Associates Inc., cn=Roman Yurkiewicz, email=bfy4@aol.com, Date: 2019.09.11 14:28:30 -04'00'



GENERAL NOTES:  
 ALL GENERAL & SUBCONTRACTORS TO FIELD VERIFY ALL DIMENSIONS, AND ALL ELECTRICAL, WATER, SEWER AND GAS SERVICE LOCATIONS.

INTERIOR REMODEL @ "CITY CENTRE"

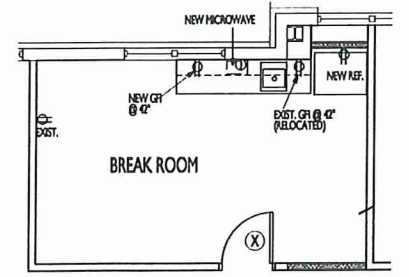
"SUITE 200" -2ND FLOOR

LOT # 9- TRACT 1A

PROJECT LOCATION: 145 CITY PLACE, PALM COAST, FLAGLER COUNTY, FLORIDA

LEGEND- WALL TYPES;  
 NEW INTERIOR PARTITION- 3-5/8" MTL. STUDS (25 GAG) @ 24" O.C. TYP. UP TO 10'-4" AFF W/ 1/2" GYP. BD. EACH SIDE  
 EXIST. INTERIOR PARTITION- 3-5/8" MTL. STUDS (25 GAG) @ 24" O.C. TYP. UP TO 10'-4" AFF W/ 1/2" GYP. BD. EACH SIDE  
 EXIST. FIRE RATED INTERIOR PARTITION- 3-5/8" MTL. STUDS (25 GAG) @ 24" O.C. TYP. UP TO DECK ABOVE W/ 5/8" FIRE RESISTANT GYP. BD. EACH SIDE  
 NEW (I) FIRE RATED INTERIOR PARTITION- 3-5/8" MTL. STUDS (25 GAG) @ 24" O.C. TYP. UP TO DECK ABOVE W/ 5/8" FIRE RESISTANT GYP. BD. EACH SIDE. UL ASSEMBLY U419  
 EXISTING EXTERIOR WALL ASSEMBLY

PROPOSED 2ND FLOOR PLAN  
 SCALE; 3/16" = 1'-0"



PARTIAL ELECT. POWER PLAN  
 SCALE; 3/16" = 1'-0"



BFY Associates Incorporated-  
 Architecture/Consulting/Planning  
 Roman Yurkiewicz, Architect FL Reg. No. AR 0015612  
 645 N. WALNUT AVE, DAYTONA BEACH, FL 32118  
 Ph: 386/405-3151  
 Email: bfy4@aol.com Web: Bfydesign.com

DATE: SEPTEMBER 11, 2019 Scale: AS INDICATED

PROPOSED 2ND FLOOR PLAN  
 PARTIAL ELECT. POWER PLAN

She No. A3

